

# 50 TONNE AIR / HYDRAULIC SHOP PRESS





**Disclaimer:**

*The information in this document is to the best of our knowledge true and accurate, but all recommendations or suggestions are made without guarantee. Since the conditions of use are beyond their control, Tundra Industrial ® disclaim any liability for loss or damage suffered from the use of this data or suggestions. Tundra Industrial ® reserve the right to change product specifications and warranty statements without further notification. All images are for illustration purposes only.*

## 1. SAFETY GUIDELINES

- 1.1 Please read the following guidelines carefully before using this equipment. This equipment must be kept clean and kept in good working order in order to ensure safe and effective operation. Inspect the equipment carefully before use and do not use if any defects are identified. Contact your nearest Tundra Industrial Dealer for further information on repairs and replacement parts. Only use Tundra Industrial approved replacement parts.
- 1.2 The maximum load for this equipment is 50 Tonnes. Do not exceed this rated capacity. Never apply excessive force to a workpiece and always use the pressure gauge to accurately determine the applied load.
- 1.3 Use this press for the purpose for which it is intended. Do Not use it for any other purpose it is not designed to perform. Do not modify or attempt to enhance the equipment in any way.
- 1.4 Keep children, unauthorized persons & animals away from the work area.
- 1.5 Remove any ill fitting clothing before use. (for example remove ties, watches, rings and other loose jewellery) long hair should be tied up to prevent entanglement.
- 1.6 Wear approved impact safety goggles, full-face impact safety shield and heavy-duty work gloves when operating the press. Ear defenders and non-slip / steel toe-capped footwear should be worn were applicable.
- 1.7 Keep proper balance and footing, do not overreach.
- 1.8 Only use this press on a surface that is stable, level, dry and not slippery, and capable of sustaining the load. Keep the surface clean, tidy and free from unrelated materials and ensure that there is adequate lighting.
- 1.9 Inspect the press before each use. Do not use if bent, broken, cracked, leaking or otherwise damaged, any suspect parts are noted or it has been subjected to a shock load.
- 1.10 Check to ensure that all applicable bolts and nuts are firmly tightened.
- 1.11 Ensure that workpiece is center-loaded and secure before use.
- 1.12 Keep hands and feet away from bed area at all times.
- 1.13 Do not use the shop press to compress spring or any other item that could disengage and cause a potential hazard. Never stand directly in front of loaded press and never leave loaded press unattended.
- 1.14 Do not operate the press when you are tired or under the influence of alcohol, drugs or any intoxicating medication.
- 1.15 Do not allow untrained persons to operate the press.
- 1.16 Do not make any modifications to the press.
- 1.17 Do not use brake fluid or any other improper fluid and avoid mixing different types of oil when adding hydraulic oil. Only good quality hydraulic jack oil can be used.
- 1.18 Do not expose the press to rain or any other kind of bad weather.
- 1.19 If the press needs repairing and/or there is any part that needs to be replaced, have it repaired by authorized technicians and only use the replacement parts supplied by the manufacturer.



### **WARNING:**

No responsibility is accepted for incorrect use of this equipment. Incorrect use can result in damage to the equipment and danger to the user. Warranty will be void in the event of incorrect use. Hydraulic products are only repaired by Tundra Industrial authorised engineers. The warnings, cautions and instructions discussed in this instruction manual cannot cover all possible conditions and situations that may occur. It must be understood by the operator that common sense and caution are factors which cannot be built into this product, but must be supplied by the operator.

## 2. SPECIFICATIONS

Model Number	TUNSHPR50
Maximum Load:	50 Tonne
Input Air Pressure:	0.75 ~ 0.85 Mpa
Ram Stroke:	200mm / 7.8"
Ram Diameter:	152mm / 6.0"
Lateral Ram Travel:	245mm
Operating Range:	69 -1048mm
Rack / Working Width	730mm / 28.5"
Air Inlet:	1/4" BSP
Weight:	302.4kgs
Assembled Dimensions: (L x W x H)	1030 x 800 x 1877mm

## 3. DESCRIPTION

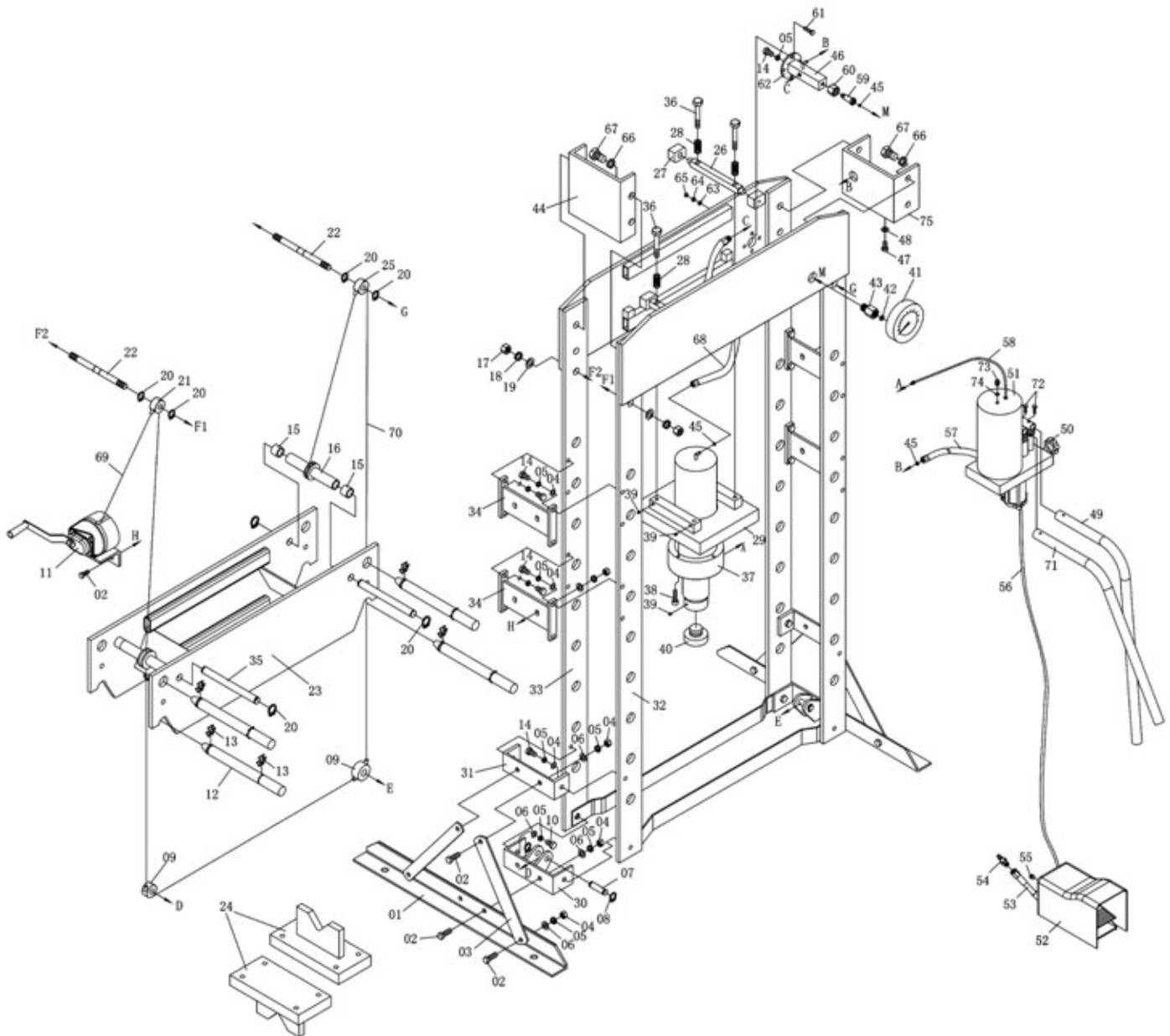
This industrial bench shop press is designed for automotive, engineering workshops and repair shops where pressing, bending, straightening and forming is required. Features include:

- H-frame 50 Tonne hydraulic shop press
- Sliding ram mechanism with V-blocks
- Floor mounting type with industrial grade hydraulic system
- Fully-welded steel frame for maximum rigidity and strength
- Manual hand pump offers more control for delicate applications

## 4. ASSEMBLY

Use the parts list and exploded drawing included on the following pages as a reference to help you to assemble this equipment.

- Remove any loose items from the crate. Attach slings around the top cross member, using a suitable hoist or gantry lift the framework out of the transportation crate into an upright position.
- Attach base sections **(01)** and supports **(03)** to the left and right posts using bolts **(02)**, washers **(06)**, lock washers **(05)** and nuts **(04)**.
- Remove the M12 transportation bolts holding the bed frame to the posts.
- Move the winch to the outside of the left hand post and attach using bolts **(02)**, washers **(06)**, lock washers **(05)** and nuts **(04)**.
- Ensure that the cables are located correctly in the rollers before fully tightening



## 5. INSTALLATION

- Attach the shop press securely to a flat, firm, level surface taking into account clearance for working pieces.
- **DANGER!** The press is top heavy. If it requires moving after assembly or for relocation, use suitable slings around the topcrossbeam, or lift direct with a forklift with the forks located under the top crossbeam. **DO NOT** use a pallet truck.
- Connect the equipment to an air supply as recommended. The air supply must be capable of 108 to 123psi and 9cfm.
- Before operating the press, the hydraulic system may require purging in order to eliminate any air that may have built up during transit.
- Manual Operating System: Open the release valve by turning anti-clockwise and pump the handle several times.
- Air Operating System: Open the release valve by turning anti-clockwise and connect the air valve to the air line system, operate the air valve, allowing the pump to operate until the air has been purged. Should the system malfunction at any time, repeating either of these procedures may resolve the problem.
- **WARNING!** This equipment is designed to withstand greater loads than the hydraulic units can develop. For safety reasons, always ensure the workpiece is secured on the table to ensure loads that flex will not suddenly “give” causing danger to operator or damage to component.

## 6. BEFORE FIRST USE

Before first use of this product, purge away air from the hydraulic system: open the release valve by turning it counter-clockwise.

Pump several full strokes to eliminate any air in the system. Check all parts and conditions, if there is any part broken, stop using it and contact your supplier immediately.

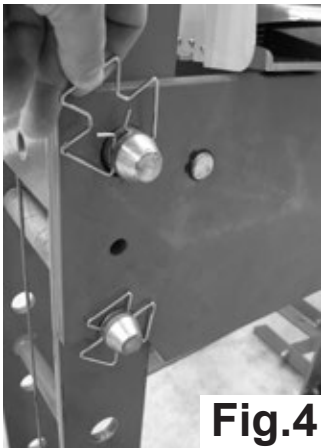
## 7. OPERATING INSTRUCTIONS

**WARNING!** Ensure that you read, understand and apply the safety instructions and warnings before use.

Please refer to **Fig.1** (page 5)

1. Connect the air valve to the air supply.
2. Set the bed frame at the desired height, if adjustment is required, turn the hand winch until the cable just takes the weight of the bed frame, remove the safety clips **(13)** from the back of the pins **(12)**, see **(Fig.4)** and withdraw the pins. Use the hand winch to raise or lower the bed frame to the height required, insert pins and safety clips **(Fig.5)**. Slacken off the hand winch so that the pins are taking the full weight of the bed frame.
3. Check that the release valve on the hydraulic unit is fully closed, ready for operation.
4. Locate the flat pressing plates or the v-blocks on to the bed frame, push down the locating pins to ensure the plates do not slip. Place workpiece onto the plates and position the head of the hydraulic unit on the centre of the workpiece using an appropriate extension. **Note:** Care must be taken to ensure the plates do not fall from the bed frame.
5. When work is complete turn the release valve anti-clockwise to release the pressure and the piston and the ram head will retract automatically. Note: Always keep the piston retracted after use.
6. Disconnect the air valve from the air supply.

**WARNING!** DO NOT apply off centre loads.



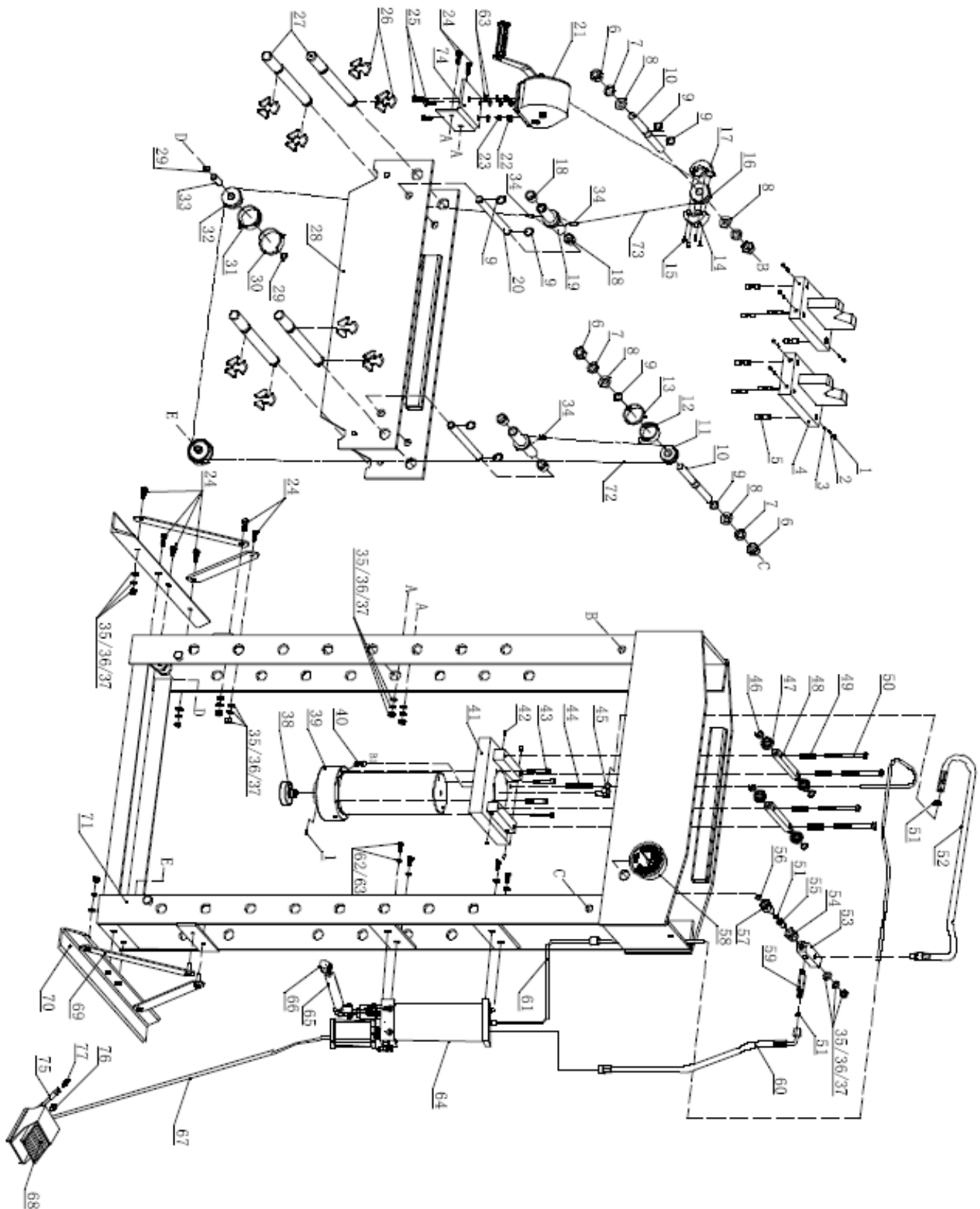
## 8. MAINTENANCE

- Clean the outside of the press with dry, clean and soft cloth and periodically lubricate the joints and all moving parts with a light oil as needed.
- When not in use, store the press in a dry location with ram and piston fully retracted.
- When press efficiency drops, bleed the hydraulic system to eliminate any air in the system.
- Check the hydraulic oil: remove the oil filler screw (P06) on the pump, if it is not adequate, fill with high quality hydraulic jack oil as necessary, then replace the oil filler nut, purge away air from the hydraulic system as described previously.

### 9. EXPLODED PARTS LIST & DIAGRAM (MAIN ASSEMBLY)

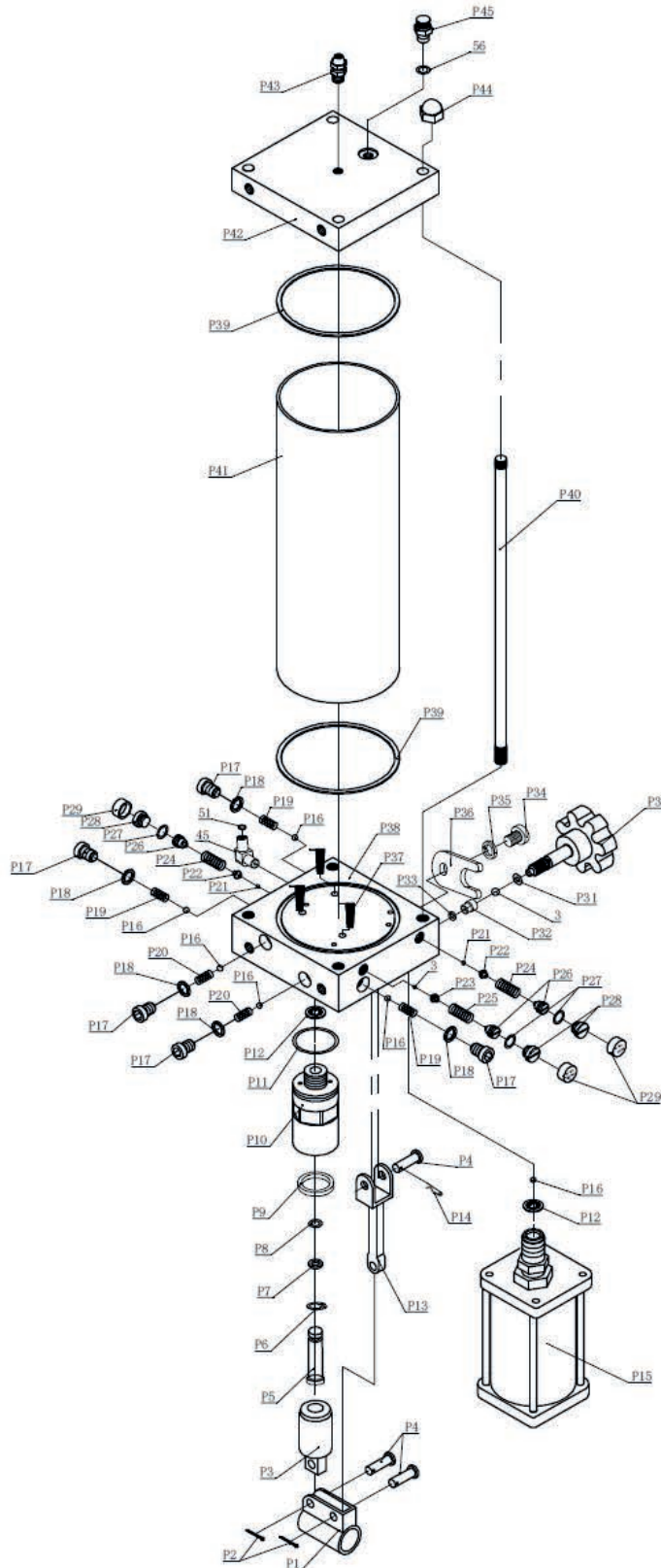
Part No.	Description	Qty	Part No.	Description	Qty
01	Screw	9	40	Connector	1
02	Spring	8	41	Under Plate	1
03	Steel Ball	8	42	Screw	4
04	Heel Block	2	43	Screw	4
05	Screw	8	44	Spring	1
06	Nut	4	45	Elbow	1
07	Lock Washer	4	46	Circlip	4
08	Washer	4	47	Ball Bearing	4
09	Circlip	8	48	Connecting Rod	2
10	Roller Pin	2	49	Spring	4
11	Roller	1	50	Bolt	4
12	Shield 3	1	51	O-ring	3
13	Shield 4	1	52	Hydraulic Hose 1	1
14	Shield 1	1	53	Junction Rod	1
15	Screw	4	54	Nut	1
16	Roller 3	1	55	Screw	1
17	Shield 2	1	56	Nylon Ring	1
18	Bush	4	57	Gauge Fitting	1
19	Shaft Wheel	2	58	Pressure Gauge	1
20	Pin	2	59	Joint	1
21	Hand Winch	1	60	Hydraulic Hose 3	1
22	Nut	3	61	PU Oil Hose	1
23	Lock Washer	3	62	Bolt	4
24	Bolt	14	63	Washer	7
25	Bolt	3	64	Pump Assy'	1
26	Circlip	8	65	Handle	1
27	Pin	4	66	Cover For Handle	1
28	Bed Frame	1	67	Air Hose	1
29	Circlip	4	68	Air Valve	1
30	Shield 2	2	69	Support	4
31	Shield 1	2	70	Base Section	2
32	Roller	2	71	Post	1
33	Pin 2	2	72	Cable	1
34	Cable Sheath	3	73	Cable	1
35	Washer	15	74	Plate	1
36	Lock Washer	15	75	Air inlet Assy	1
37	Nut	15	76	Plug	1
38	Serrated Saddle	1	77	Fitting	1
39	Ram Assy'	1			





### 10. EXPLODED PARTS LIST & DIAGRAM (PUMP)

Part No.	Description	Qty	Part No.	Description	Qty
P1	Ring For Ram	1	P26	Screw	3
P2	Pin	2	P27	O-ring	3
P3	Pump Core	1	P28	Screw	3
P4	Pin	3	P29	Plastic Cap	3
P5	Pump Core	1	P30	Release Valve	1
P6	Circlip	1	P31	O-ring	1
P7	F4 Ring	1	P32	Release Valve seat	1
P8	O-Ring	1	P33	Washer	1
P9	U- Ring	1	P34	Screw	1
P10	Pump Core Base	1	P35	Washer	1
P11	O-Ring	1	P36	U-Ring	1
P12	Copper Ring	2	P37	Filter Net	3
P13	Connecting Rod	1	P38	Pump Assy	1
P14	R-Pin	1	P39	Direct Fitting	2
P15	Air Motor	1	P40	Connecting Fitting	4
P16	Steel Ball	6	P41	Reservoir	1
P17	Screw	5	P42	Top Cap	1
P18	Washer	5	3	Steel Ball	2
P19	In-Spring	3	45	Elbow	1
P20	Out-Spring	2	51	O-Ring	1
P21	Steel Ball	2	56	Nylon Ring	1
P22	Ball Seat	2			
P23	Ball Seat	1			
P24	Spring	2			
P25	Spring	1			



## EC DECLARATION OF CONFORMITY

We, Tundra Industrial, as the authorised European Community representative of the manufacturer, declare that the following equipment conforms to the requirements of the following Directives:

**BS EN 1494:2000+A1:2008**

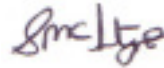
Mobile or movable jacks and associated lifting equipment

**2006/42/EC (as amended)**

Machinery Directive

**Equipment Category:** Hydraulic Shop Press / Lifting Equipment  
**Product Name/Model:** TUNSHPR50 - 50 Tonne Air / Hydraulic Shop Press  
**Maximum Load:** 50 Tonne

**Signed by:** Stephen McIntyre  
**Position in the company:** Operations Director  
**Date:** 04 November 2016  
**This technical document is held by:** Jimmy Hemphill



Technical file holder's address as shown below

### Name and address of manufacturer or authorised representative:

Tundra Industrial,  
Herons Way,  
Chester Business Park,  
Chester,  
United Kingdom,  
CH4 9QR

Telephone: +44 (0)1244 646 048  
Fax: +44 (0)1244 241 1



# USER MANUAL

## TUNSHPR50

## LIMITED WARRANTY STATEMENT

Tundra Industrial warrants its customers that its products will be free of defects in workmanship or material.

Tundra Industrial shall, upon suitable notification, correct any defects, by repair or replacement, of any parts or components of this product that are determined by Tundra Industrial to be faulty or defective.

This warranty is void if the equipment has been subjected to improper installation, storage, alteration, abnormal operations, improper care, unauthorised service or repair.

### Warranty Period

Tundra Industrial will assume both the parts and labour expense of correcting defects during the stated warranty periods below. All warranty periods start from the date of purchase from an authorised Tundra Industrial dealer. If proof of purchase is not available from the end user, then the date of purchase will be deemed to be 3 months after the initial sale to the distributor.

1 Year

• *Tundra Industrial 50 Tonne Air / Hydraulic Shop Press - [TUNSHPR50]*

90 Days

• *All replacement parts purchased outside of the warranty period*

**Important:** All parts used in the repair or replacement of warranty covered equipment will be subject to a minimum of 90 days cover or the remaining duration of the warranty period from the original date of purchase.

### Warranty Registration / Activation

You can register and activate your warranty by visiting the Jefferson Tools website using the following address: [www.jeffersonstools.com/warranty](http://www.jeffersonstools.com/warranty) and completing the online form. Online warranty registration is recommended as it eliminates the need to provide proof of purchase should a warranty claim be necessary.

### Warranty Repair

Should Tundra Industrial confirm the existence of any defect covered by this warranty the defect will be corrected by repair or replacement at an authorized Tundra Industrial dealer or repair centre.

### Packaging & Freight Costs

The customer is responsible for the packaging of the equipment and making it ready for collection. Tundra Industrial will arrange collection and transportation of any equipment returned under warranty. Upon inspection of the equipment, if no defect can be found or the equipment is not covered under the terms of the Tundra Industrial warranty, the customer will be liable for any labour and return transportation costs incurred. These costs will be agreed with the customer before the equipment is returned.

### Warranty Limitations

Tundra Industrial will not accept responsibility or liability for repairs made by unauthorised technicians or engineers. Tundra Industrial's liability under this warranty will not exceed the cost of correcting the defect of the Tundra Industrial products. Tundra Industrial will not be liable for incidental or consequential damages (such as loss of business or hire of substitute equipment etc..) caused by the defect or the time involved to correct the defect. This written warranty is the only express warranty provided by Tundra Industrial with respect to its products.

Any warranties of merchantability are limited to the duration of this limited warranty for the equipment involved. Tundra Industrial is not responsible for cable wear due to flexing and abrasion. The end user is responsible for routine inspection of cables for possible wear and to correct any issues prior to cable failure.

### Claiming Warranty Coverage

The end user must contact Tundra Industrial (Tel: **+44 (0) 1244 646 048**) or their nearest authorised Tundra Industrial dealer where final determination of the warranty coverage can be ascertained.

#### Step 1 - Reporting the Defect

##### *Online Method:*

- Visit the website [www.jeffersonstools.com/warranty](http://www.jeffersonstools.com/warranty) and complete the Warranty Returns form. You can complete the form online and submit it to us directly or download the form to print out and return by post.

##### *Telephone Method:*

Contact your Tundra Industrial dealer or sales representative with the following information:

- Model number
- Serial number (usually located on the specification plate)
- Date of purchase

A Warranty Returns form will be sent to you for completion and return by post or fax, together with details of your nearest authorised Tundra Industrial repair centre. On receipt of this form Tundra Industrial will arrange to collect the equipment from you at the earliest convenience.

#### Step 2 - Returning the Equipment

It is the customer's responsibility to ensure that the equipment is appropriately and securely packaged for collection. Please ensure that you include a copy of your proof of purchase. Please note that Tundra Industrial cannot assume any responsibility for any damage incurred to equipment during transit. Any claims against a third party courier will be dealt with under the terms & conditions of their road haulage association directives.

#### Step 3 - Assessment and Repair

On receipt, the equipment will be assessed by an authorised Tundra Industrial engineer and it will be determined if the equipment is defective and in need of repair and any repairs needed are covered by the warranty policy. In order to qualify for warranty cover all equipment presented must have been used, serviced and maintained as instructed in the user manual.

Where repair is not covered by the warranty a quotation for repair, labour costs and return delivery will be sent to the customer (normally within 7 working days). **Note:** If the repair quotation is not accepted Tundra Industrial will invoice 1 hour labour time at £30 per hour plus return carriage costs (plus VAT).

In cases where no fault can be found with the equipment, or, if incorrect operation of the equipment is identified as the cause of the problem, a minimum of 1 hour labour at £30 per hour plus carriage costs will be required before the equipment will be despatched back to the customer.

Any equipment repaired or replaced under warranty will normally be ready for shipment back to the customer within 7 working days upon receipt of the equipment at an authorised Tundra Industrial Repair centre (subject to part availability). Where parts are not immediately available Tundra Industrial will contact you with a revised date for completion of the repair.

#### General Warranty Enquiries

For any further information relating to Tundra Industrial warranty cover please call **+44 (0) 1244 646 048**.



