



USER MANUAL

TUNSHPR30

# 30 TONNE HYDRAULIC SHOP PRESS





**Disclaimer:**

*The information in this document is to the best of our knowledge true and accurate, but all recommendations or suggestions are made without guarantee. Since the conditions of use are beyond their control, Tundra Industrial @ disclaim any liability for loss or damage suffered from the use of this data or suggestions. Furthermore, no liability is accepted if use of any product in accordance with this data or suggestions infringes any patent. Tundra Industrial @ reserve the right to change product specifications and warranty statements without further notification. All images are for illustration purposes only.*

## 1. SAFETY GUIDELINES

- 1.1 Please read the following guidelines carefully before using this equipment. This equipment must be kept clean and kept in good working order in order to ensure safe and effective operation. Inspect the equipment carefully before use and do not use if any defects are identified. Contact your nearest Tundra Industrial Dealer for further information on repairs and replacement parts. Only use Tundra Industrial approved replacement parts.
- 1.2 The maximum load for this equipment is 30 Tonnes. Do not exceed this rated capacity. Never apply excessive force to a workpiece and always use the pressure gauge to accurately determine the applied load.
- 1.3 Use this press for the purpose for which it is intended. Do Not use it for any other purpose it is not designed to perform. Do not modify or attempt to enhance the equipment in any way.
- 1.4 Keep children, unauthorized persons & animals away from the work area.
- 1.5 Remove any ill fitting clothing before use. (for example remove ties, watches, rings and other loose jewellery) long hair should be tied up to prevent entanglement.
- 1.6 Wear approved impact safety goggles, full-face impact safety shield and heavy-duty work gloves when operating the press. Ear defenders and non-slip / steel toe-capped footwear should be worn were applicable.
- 1.7 Keep proper balance and footing, do not overreach.
- 1.8 Only use this press on a surface that is stable, level, dry and not slippery, and capable of sustaining the load. Keep the surface clean, tidy and free from unrelated materials and ensure that there is adequate lighting.
- 1.9 Inspect the press before each use. Do not use if bent, broken, cracked, leaking or otherwise damaged, any suspect parts are noted or it has been subjected to a shock load.
- 1.10 Check to ensure that all applicable bolts and nuts are firmly tightened.
- 1.11 Ensure that workpiece is center-loaded and secure before use.
- 1.12 Keep hands and feet away from bed area at all times.
- 1.13 Do not use the shop press to compress spring or any other item that could disengage and cause a potential hazard. Never stand directly in front of loaded press and never leave loaded press unattended.
- 1.14 Do not operate the press when you are tired or under the influence of alcohol, drugs or any intoxicating medication.
- 1.15 Do not allow untrained persons to operate the press.
- 1.16 Do not make any modifications to the press.
- 1.17 Do not use brake fluid or any other improper fluid and avoid mixing different types of oil when adding hydraulic oil. Only good quality hydraulic jack oil can be used.
- 1.18 Do not expose the press to rain or any other kind of bad weather.
- 1.19 If the press needs repairing and/or there is any part that needs to be replaced, have it repaired by authorized technicians and only use the replacement parts supplied by the manufacturer.



### WARNING:

No responsibility is accepted for incorrect use of this equipment. Incorrect use can result in damage to the equipment and danger to the user. Warranty will be void in the event of incorrect use. Hydraulic products are only repaired by Tundra Industrial authorised engineers. The warnings, cautions and instructions discussed in this instruction manual cannot cover all possible conditions and situations that may occur. It must be understood by the operator that common sense and caution are factors which cannot be built into this product, but must be supplied by the operator.

## 2. SPECIFICATIONS

Model Number	TUNSHPR30
Maximum Load:	30 Tonne
Ram Stroke:	152mm / 5.9"
Lateral Ram Travel:	200mm
Operating Range:	40 -1050mm
Rack / Working Width	535mm / 28.5"
Weight:	164kg
Assembled Dimensions: (L x W x H)	795 x 700 x 1801mm

## 3. DESCRIPTION

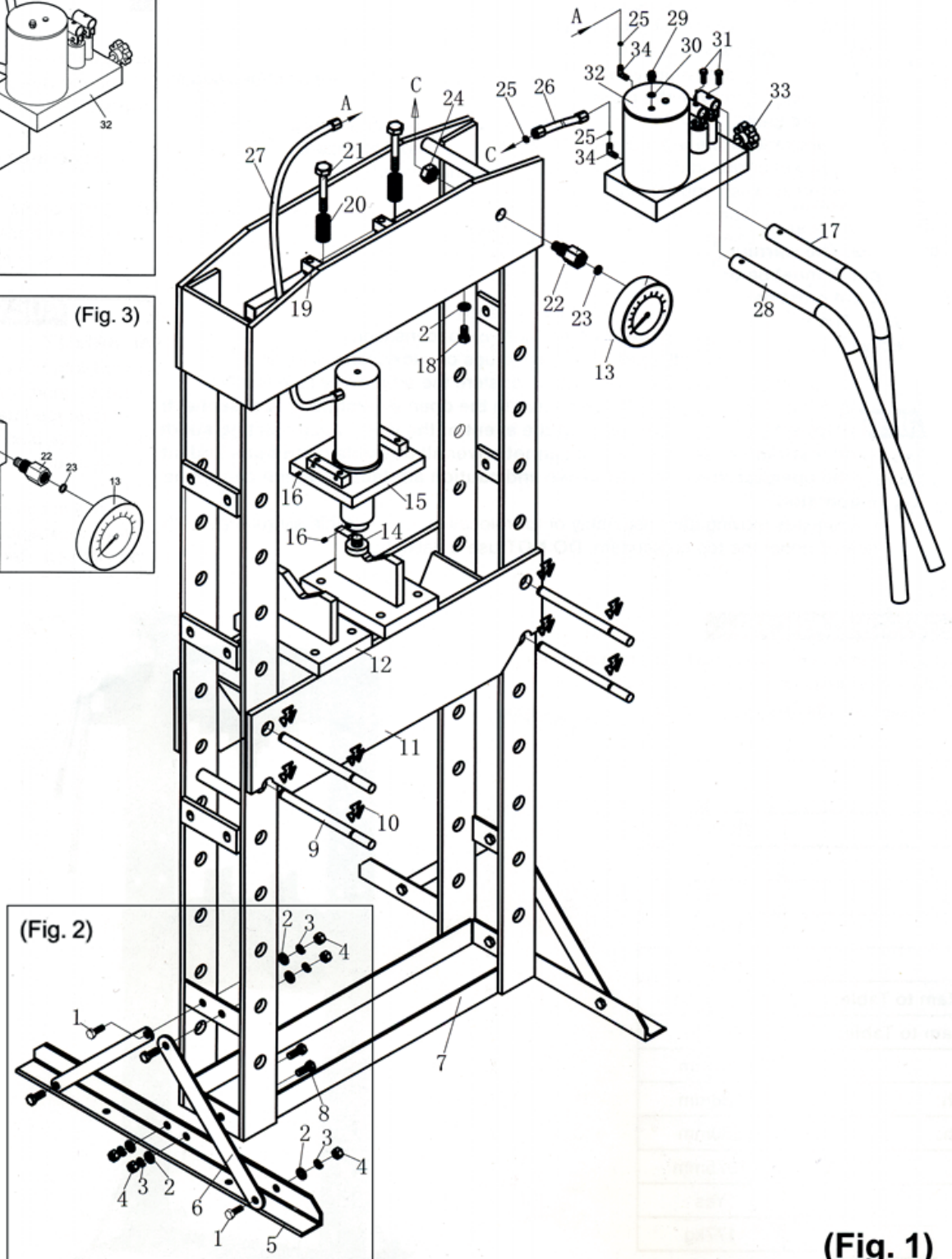
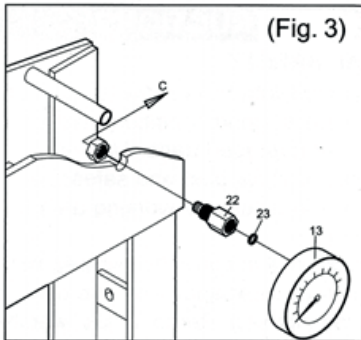
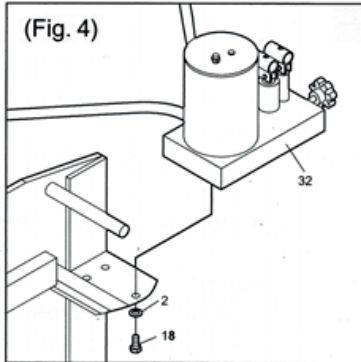
This industrial bench shop press is designed for automotive, engineering workshops and repair shops where pressing, bending, straightening and forming is required. Features include:

- H-frame 30 Tonne hydraulic shop press
- Sliding ram mechanism with V-blocks
- Floor mounting type with industrial grade hydraulic system
- Fully-welded steel frame for maximum rigidity and strength
- Manual hand pump offers more control for delicate applications

## 4. ASSEMBLY

Use the parts list and exploded drawing included on the following pages as a reference to help you to assemble this equipment.

- Remove all components from the packaging and ensure that anything stowed within the main frame is removed before the frame is raised to the vertical position.
- The base sections (feet) and supports must be attached before the frame is raised into the vertical position.
- Attach a base section (05) to both posts and lower cross member (07) using bolts (08), washers (02), lock washers (03) and nuts (04).
- Attach two supports (06) diagonally to each of the post and base sections. Use bolts (01), washers (02), lock washers (03) and nuts (04) at each end of the supports. (See inset Fig.2)
- Lifting from the upper cross members end, lift the press into an upright position.
- **WARNING!** - Ensure help is available and use slings and a suitable hoist or gantry to raise the press to an upright position.
- Insert the lower two bed frame pins (09) at the level required into the holes in each of the posts, ensuring that they are both on the same level. With the help of an assistant insert the bed frame (11) into the press frame and rest it onto the pins. Attach a circlip (10) to each end of each lower pin. Insert the two upper pins (09) through both the bed frame and the posts and attach a circlip (10) to each end of each upper pin.
- Within the right hand end of the upper cross members is a platform to which the pump assembly (32) should be attached using three bolts (18) and three washers (02). (See inset Fig.4).
- Bolt the gauge fitting (22) to the upper cross member using a nut (24). Screw the pressure gauge (13) onto the fitting ensuring you include the nylon sealing ring (23). Attached to the pump is a hydraulic hose which should be connected to the back of the gauge. (See inset Fig.3).
- The sliding ram assembly is factory mounted to the upper cross members. The hydraulic hose (27) is already attached to the ram. Connect the free end (A) to the union on the pump (also labelled 'A' on the diagram on the opposite page).
- Slide the two handles (28 & 17) into their respective sockets and retain in place with bolts (31).
- Place the two heel blocks (12) onto the bed frame (11)



(Fig. 1)

## 5. INSTALLATION

Securely attach the press to a flat, firm, level surface taking into account clearance for working pieces.

**DANGER!** The press is top heavy. If it requires moving after assembly or for relocation, use suitable slings around the top cross-beam, or lift direct with a forklift with the forks located under the top crossbeam. **DO NOT** use a pallet truck.

**Purge hydraulic system.** Before operating the press, the hydraulic system may require purging in order to eliminate any air that may have built up during transit. Open the release valve (33) by turning anti-clockwise and pump the handle (28) several times. Close release valve. Should the system malfunction at any time, repeating this procedure may resolve the problem.

**DANGER!** This press is designed to withstand greater loads than the hydraulic units can develop. For safety reasons, always ensure the workpiece is secured on the table to ensure loads that flex will not suddenly “give” causing danger to the operator or damage to the component.

## 6. BEFORE FIRST USE

Before first use of this product, purge away air from the hydraulic system: open the release valve by turning it counter-clockwise.

Pump several full strokes to eliminate any air in the system.

Check all parts and conditions, if there is any part broken, stop using it and contact your supplier immediately.

## 7. OPERATING INSTRUCTIONS

**WARNING!** Ensure that you read, understand and apply the safety instructions and warnings before use.

Please refer to Fig.1 (page 5)

1. Position the work table at the required operating height by inserting the support pins into the appropriate holes in the main frame.
2. Place the heel blocks (12) onto bed the frame (11), then place the workpiece onto the heel blocks and align beneath the ram as required.

**Note:** Care must be taken to ensure a support block does not fall from the press work table. If necessary hold the configuration in position with clamps.

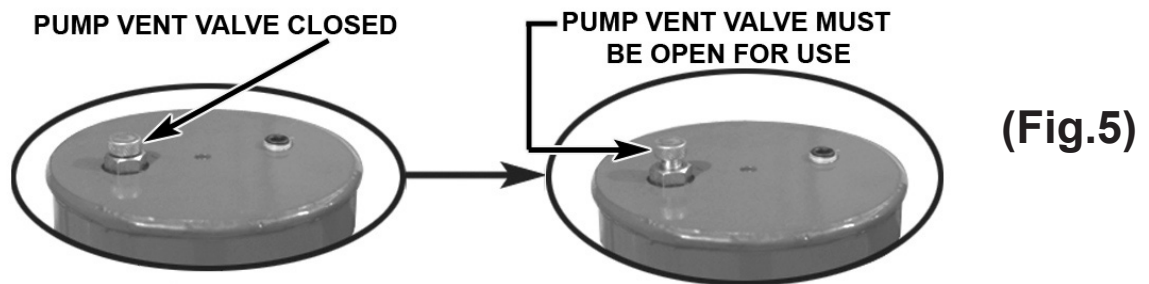
3. Fully open the pump vent valve within the oil filler nut and leave open for normal operation. (See fig.5).
4. Close the release valve (33) by turning it clockwise until it is firmly closed.
5. Pump the handle (28) to quickly bring the ram into position on the workpiece.
6. Before applying any pressure to the workpiece, recheck the alignment with the ram and ensure that the workpiece and press tools are supported in such a way that they cannot flex.

**WARNING!** DO NOT apply off-centre loads.

7. Use the pump handle (17) for smaller more controlled movements and applying load onto workpiece.
8. When work is done, stop pumping the handle. Slowly and carefully free load from workpiece by turning the release valve (33) anti-clockwise in small increments.

Note: Always keep the piston retracted after use to avoid ram corrosion. 4.2.8

9. Once ram has fully retracted, remove workpiece from work table.



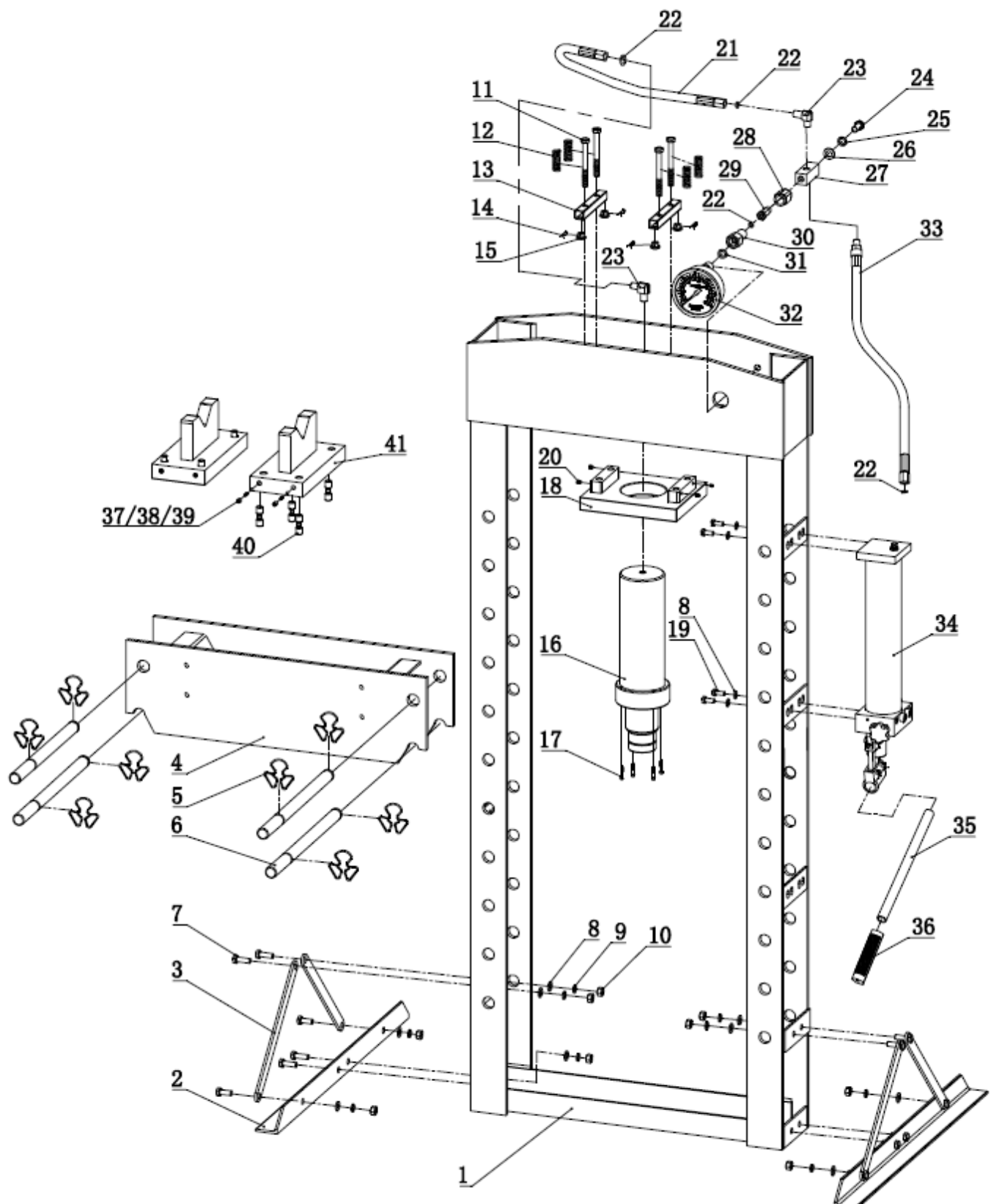
## 8. MAINTENANCE

- Clean the outside of the press with dry, clean and soft cloth and periodically lubricate the joints and all moving parts with a light oil as needed.
- When not in use, store the press in a dry location with ram and piston fully retracted.
- When press efficiency drops, bleed the hydraulic system to eliminate any air in the system.
- Check the hydraulic oil: remove the oil filler screw (P06) on the pump, if it is not adequate, fill with high quality hydraulic jack oil as necessary, then replace the oil filler nut, purge away air from the hydraulic system as described previously.

### 9. EXPLODED PARTS LIST & DIAGRAM (MAIN ASSEMBLY)

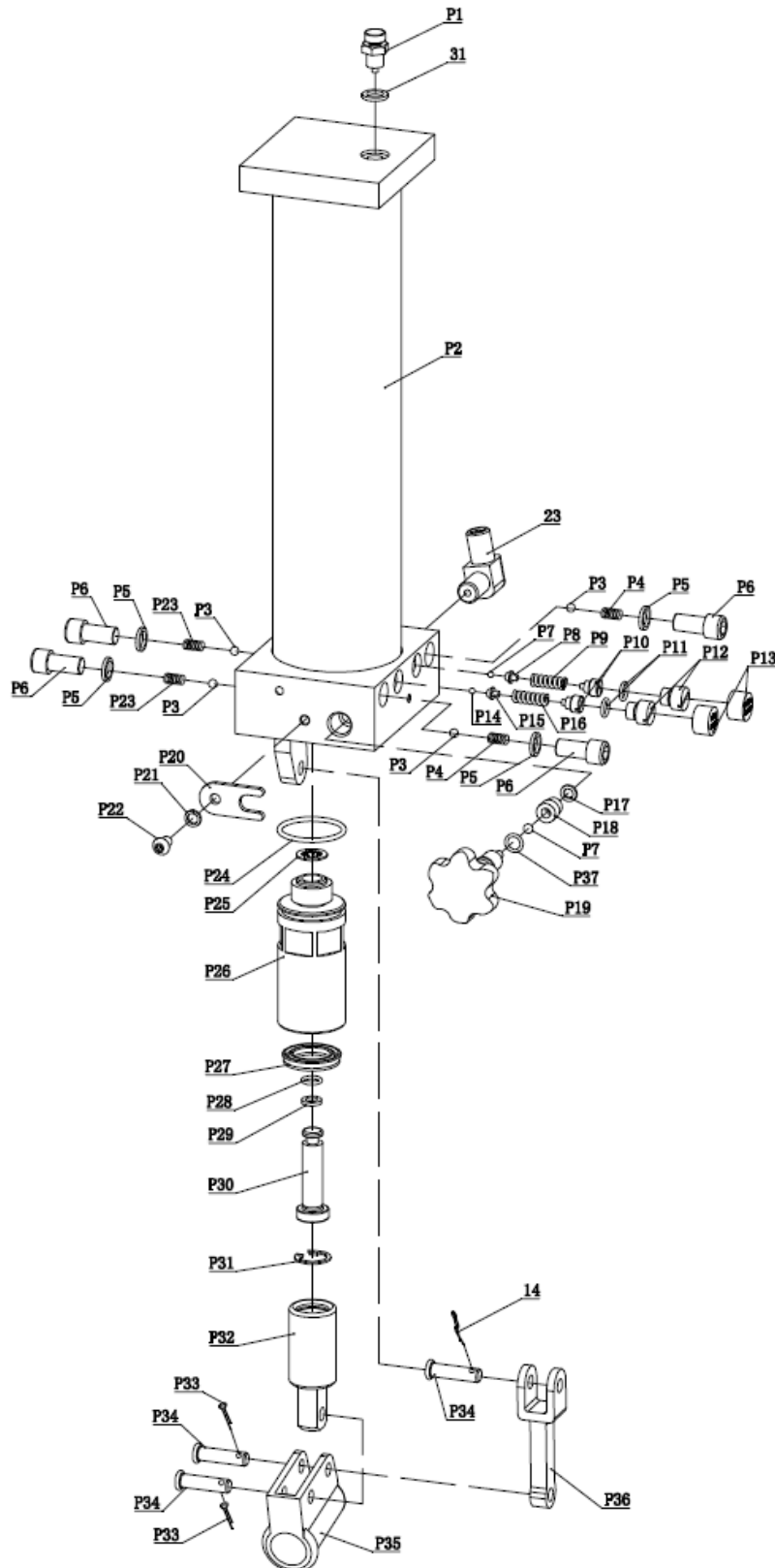
Part No.	Description	Qty	Part No.	Description	Qty
1	Frame	1	24	Bolt	1
2	Base section	2	25	Lock Washer	1
3	support	4	26	Washer	1
4	Working table	1	27	Connector	1
5	circlip	8	28	Nut	1
6	Bed Frame Pin	4	29	Screw	1
7	Bolt	12	30	Gauge Fitting	1
8	Washer	16	31	Nylon ring	1
9	Lock Washer	12	32	Gauge	1
10	Nut	12	33	Hydraulic Hose	1
11	Bolt	4	34	Pump Assy	1
12	Spring	4	35	Handle	3
1	Nut	8	31	Setting plate	1
13	Link Rod	2	36	Grip	1
14	R Pin	4	37	Screw	8
15	Plastic Rod	4	38	Spring	8
16	Ram	1	39	Ball	8
17	Screw	4	40	Block Rod	8
18	Ram Assy Plate	1	41	Heel Block	2
19	Bolt	4			
20	Screw	4			
21	Oil Hose	1			
22	O ring	4			
23	Connector	2			





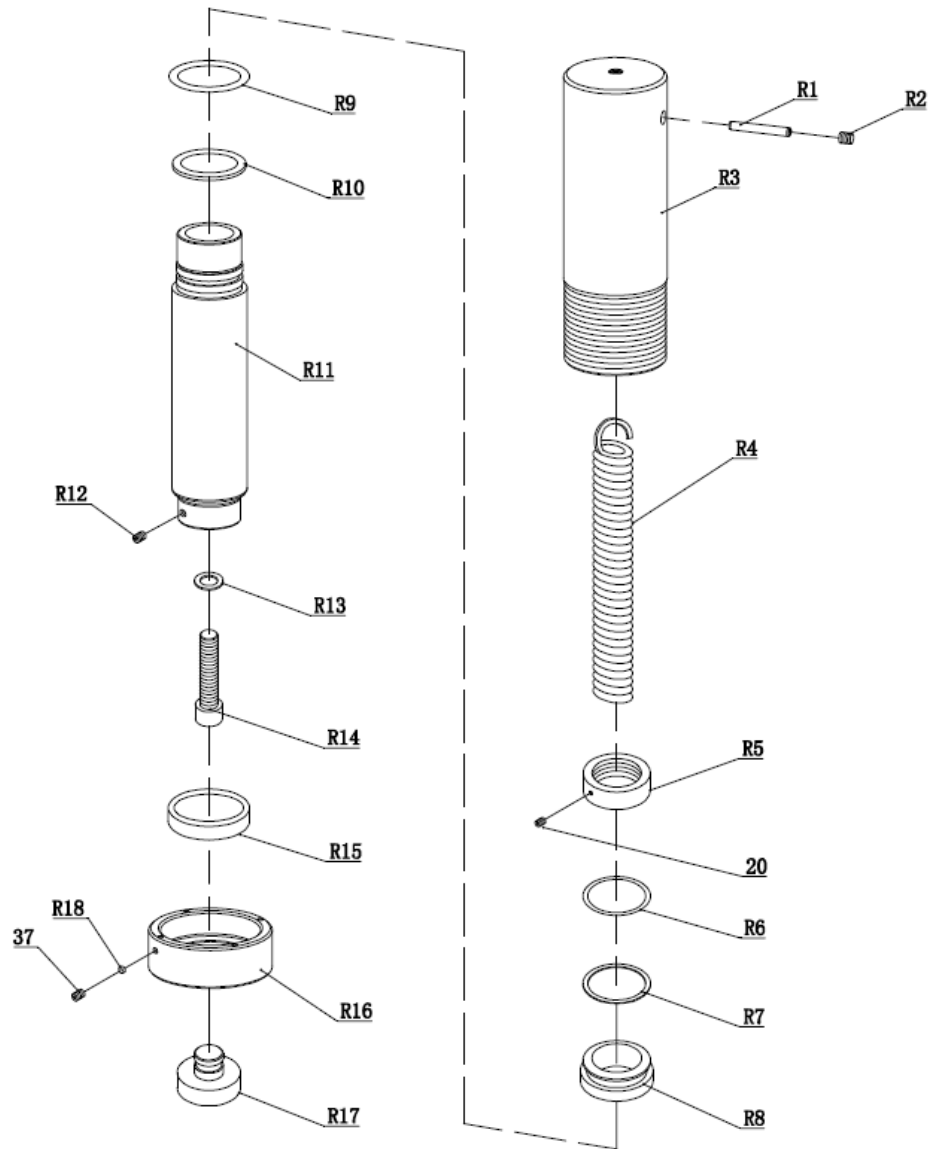
### 10. EXPLODED PARTS LIST & DIAGRAM (PUMP)

Part No.	Description	Qty	Part No.	Description	Qty	Part No.	Description	Qty
P1	Screw	1	P14	Ball	1	P28	O Ring	1
P2	Pump	1	P15	Ball Set	1	P29	Seal Ring	1
P3	Ball	4	P16	Spring	1	P30	Small Piston	1
P4	Spring	2	P17	Washer	1	P31	Circlip	1
P5	Copper Washer	4	P18	Ball Set	1	P32	Big Piston	1
P6	Screw	4	P19	Release Valve	1	P33	Pin	2
P7	Ball	2	P20	U Circlip	1	P34	Pin	3
P8	Ball Set	1	P21	Lock Washer	1	P35	Handle Bracket	1
P9	Spring	1	P22	Screw	1	P36	Connector	1
P10	Screw	2	P23	Spring	2	P37	O Ring	1
P11	O Ring	2	P24	O Ring	1	14	R Pin	1
P12	Seal Screw	2	P25	Copper Washer	1	23	Connector	1
P13	Plastic Cap	2	P26	Piston Set	1	31	Nylon Ring	1
P14	Ball	1	P27	O Ring	1			



### 11. PARTS LIST & PARTS DIAGRAM (RAM)

Part No.	Description	Qty
R1	Pin	1
R2	Screw	1
R3	Ram	1
R4	Spring	1
R5	Nut	1
R6	O ring	1
R7	Washer	1
R8	Bushing	1
R9	O ring	1
R10	Washer	1
R11	Piston	1
R12	Screw	1
R13	Copper Washer	1
R14	Screw	1
R15	Upper Nut	1
R16	Down Nut	1
R17	Saddle	1
R18	Nylon Rod	1
20	Screw	1
37	Screw	1
R21	Limited ring	1



## EC DECLARATION OF CONFORMITY

We, Tundra Industrial, as the authorised European Community representative of the manufacturer, declare that the following equipment conforms to the requirements of the following Directives:

**BS EN 1494:2000+A1:2008**


Mobile or movable jacks and associated lifting equipment

**2006/42/EC (as amended)**

Machinery Directive

**Equipment Category:** Hydraulic Shop Press / Lifting Equipment  
**Product Name/Model:** TUNSHPR30 - 30 Tonne Hydraulic Shop Press  
**Maximum Load:** 30 Tonne

**Signed by:** Stephen McIntyre  
**Position in the company:** Operations Director  
**Date:** 04 November 2016  
**This technical document is held by:** Jimmy Hemphill



Technical file holder's address as shown below

### Name and address of manufacturer or authorised representative:

Tundra Industrial,  
Herons Way,  
Chester Business Park,  
Chester,  
United Kingdom,  
CH4 9QR

Telephone: +44 (0)1244 646 048  
Fax: +44 (0)1244 241 1



# USER MANUAL

TUNSHPR30

## LIMITED WARRANTY STATEMENT

Tundra Industrial warrants its customers that its products will be free of defects in workmanship or material.

Tundra Industrial shall, upon suitable notification, correct any defects, by repair or replacement, of any parts or components of this product that are determined by Tundra Industrial to be faulty or defective.

This warranty is void if the equipment has been subjected to improper installation, storage, alteration, abnormal operations, improper care, unauthorised service or repair.

### Warranty Period

Tundra Industrial will assume both the parts and labour expense of correcting defects during the stated warranty periods below. All warranty periods start from the date of purchase from an authorised Tundra Industrial dealer. If proof of purchase is not available from the end user, then the date of purchase will be deemed to be 3 months after the initial sale to the distributor.

1 Year

• *Tundra Industrial 30 Tonne Hydraulic Shop Press - [TUNSHPR30]*

90 Days

• *All replacement parts purchased outside of the warranty period*

**Important:** All parts used in the repair or replacement of warranty covered equipment will be subject to a minimum of 90 days cover or the remaining duration of the warranty period from the original date of purchase.

### Warranty Registration / Activation

You can register and activate your warranty by visiting the Jefferson Tools website using the following address: [www.jeffersonstools.com/warranty](http://www.jeffersonstools.com/warranty) and completing the online form. Online warranty registration is recommended as it eliminates the need to provide proof of purchase should a warranty claim be necessary.

### Warranty Repair

Should Tundra Industrial confirm the existence of any defect covered by this warranty the defect will be corrected by repair or replacement at an authorized Tundra Industrial dealer or repair centre.

### Packaging & Freight Costs

The customer is responsible for the packaging of the equipment and making it ready for collection. Tundra Industrial will arrange collection and transportation of any equipment returned under warranty. Upon inspection of the equipment, if no defect can be found or the equipment is not covered under the terms of the Tundra Industrial warranty, the customer will be liable for any labour and return transportation costs incurred. These costs will be agreed with the customer before the equipment is returned.

### Warranty Limitations

Tundra Industrial will not accept responsibility or liability for repairs made by unauthorised technicians or engineers. Tundra Industrial's liability under this warranty will not exceed the cost of correcting the defect of the Tundra Industrial products. Tundra Industrial will not be liable for incidental or consequential damages (such as loss of business or hire of substitute equipment etc..) caused by the defect or the time involved to correct the defect. This written warranty is the only express warranty provided by Tundra Industrial with respect to its products.

Any warranties of merchantability are limited to the duration of this limited warranty for the equipment involved. Tundra Industrial is not responsible for cable wear due to flexing and abrasion. The end user is responsible for routine inspection of cables for possible wear and to correct any issues prior to cable failure.

### Claiming Warranty Coverage

The end user must contact Tundra Industrial (Tel: **+44 (0) 1244 646 048**) or their nearest authorised Tundra Industrial dealer where final determination of the warranty coverage can be ascertained.

### Step 1 - Reporting the Defect

#### *Online Method:*

- Visit the website [www.jeffersonstools.com/warranty](http://www.jeffersonstools.com/warranty) and complete the Warranty Returns form. You can complete the form online and submit it to us directly or download the form to print out and return by post.

#### *Telephone Method:*

Contact your Tundra Industrial dealer or sales representative with the following information:

- Model number
- Serial number (usually located on the specification plate)
- Date of purchase

A Warranty Returns form will be sent to you for completion and return by post or fax, together with details of your nearest authorised Tundra Industrial repair centre. On receipt of this form Tundra Industrial will arrange to collect the equipment from you at the earliest convenience.

### Step 2 - Returning the Equipment

It is the customer's responsibility to ensure that the equipment is appropriately and securely packaged for collection. Please ensure that you include a copy of your proof of purchase. Please note that Tundra Industrial cannot assume any responsibility for any damage incurred to equipment during transit. Any claims against a third party courier will be dealt with under the terms & conditions of their road haulage association directives.

### Step 3 - Assessment and Repair

On receipt, the equipment will be assessed by an authorised Tundra Industrial engineer and it will be determined if the equipment is defective and in need of repair and any repairs needed are covered by the warranty policy. In order to qualify for warranty cover all equipment presented must have been used, serviced and maintained as instructed in the user manual.

Where repair is not covered by the warranty a quotation for repair, labour costs and return delivery will be sent to the customer (normally within 7 working days). **Note:** If the repair quotation is not accepted Tundra Industrial will invoice 1 hour labour time at £30 per hour plus return carriage costs (plus VAT).

In cases where no fault can be found with the equipment, or, if incorrect operation of the equipment is identified as the cause of the problem, a minimum of 1 hour labour at £30 per hour plus carriage costs will be required before the equipment will be despatched back to the customer.

Any equipment repaired or replaced under warranty will normally be ready for shipment back to the customer within 7 working days upon receipt of the equipment at an authorised Tundra Industrial Repair centre (subject to part availability). Where parts are not immediately available Tundra Industrial will contact you with a revised date for completion of the repair.

### General Warranty Enquiries

For any further information relating to Tundra Industrial warranty cover please call **+44 (0) 1244 646 048**.

