

# 20 TONNE HYDRAULIC SHOP PRESS





**Disclaimer:**

*The information in this document is to the best of our knowledge true and accurate, but all recommendations or suggestions are made without guarantee. Since the conditions of use are beyond their control, Tundra Industrial ® disclaim any liability for loss or damage suffered from the use of this data or suggestions. Tundra Industrial ® reserve the right to change product specifications and warranty statements without further notification. All images are for illustration purposes only.*

## 1. SAFETY GUIDELINES

- 1.1 Please read the following guidelines carefully before using this equipment. This equipment must be kept clean and kept in good working order in order to ensure safe and effective operation. Inspect the equipment carefully before use and do not use if any defects are identified. Contact your nearest Tundra Industrial Dealer for further information on repairs and replacement parts. Only use Tundra Industrial approved replacement parts.
- 1.2 The maximum load for this equipment is 20 Tonnes. Do not exceed this rated capacity. Never apply excessive force to a workpiece and always use the pressure gauge to accurately determine the applied load.
- 1.3 Use this press for the purpose for which it is intended. Do Not use it for any other purpose it is not designed to perform. Do not modify or attempt to enhance the equipment in any way.
- 1.4 Keep children, unauthorized persons & animals away from the work area.
- 1.5 Remove any ill fitting clothing before use. (for example remove ties, watches, rings and other loose jewellery) long hair should be tied up to prevent entanglement.
- 1.6 Wear approved impact safety goggles, full-face impact safety shield and heavy-duty work gloves when operating the press. Ear defenders and non-slip / steel toe-capped footwear should be worn were applicable.
- 1.7 Keep proper balance and footing, do not overreach.
- 1.8 Only use this press on a surface that is stable, level, dry and not slippery, and capable of sustaining the load. Keep the surface clean, tidy and free from unrelated materials and ensure that there is adequate lighting.
- 1.9 Inspect the press before each use. Do not use if bent, broken, cracked, leaking or otherwise damaged, any suspect parts are noted or it has been subjected to a shock load.
- 1.10 Check to ensure that all applicable bolts and nuts are firmly tightened.
- 1.11 Ensure that workpiece is center-loaded and secure before use.
- 1.12 Keep hands and feet away from bed area at all times.
- 1.13 Do not use the shop press to compress spring or any other item that could disengage and cause a potential hazard. Never stand directly in front of loaded press and never leave loaded press unattended.
- 1.14 Do not operate the press when you are tired or under the influence of alcohol, drugs or any intoxicating medication.
- 1.15 Do not allow untrained persons to operate the press.
- 1.16 Do not make any modifications to the press.
- 1.17 Do not use brake fluid or any other improper fluid and avoid mixing different types of oil when adding hydraulic oil. Only good quality hydraulic jack oil can be used.
- 1.18 Do not expose the press to rain or any other kind of bad weather.
- 1.19 If the press needs repairing and/or there is any part that needs to be replaced, have it repaired by authorized technicians and only use the replacement parts supplied by the manufacturer.



### **WARNING:**

No responsibility is accepted for incorrect use of this equipment. Incorrect use can result in damage to the equipment and danger to the user. Warranty will be void in the event of incorrect use. Hydraulic products are only repaired by Tundra Industrial authorised engineers. The warnings, cautions and instructions discussed in this instruction manual cannot cover all possible conditions and situations that may occur. It must be understood by the operator that common sense and caution are factors which cannot be built into this product, but must be supplied by the operator.

## 2. SPECIFICATIONS

Model Number	JEFSHPR20
Maximum Load:	20 Tonne
Input Air Pressure:	0.75 ~ 0.85 Mpa
Ram Stroke:	185mm / 7.3"
Lateral Ram Travel:	176mm
Operating Range:	37.5 - 988.5mm
Rack / Working Width	542mm / 21"
Weight:	111kg
Assembled Dimensions: (L x W x H)	738 x 700 x 1787mm

## 3. DESCRIPTION

This industrial bench shop press is designed for automotive, engineering workshops and repair shops where pressing, bending, straightening and forming is required. Features include:

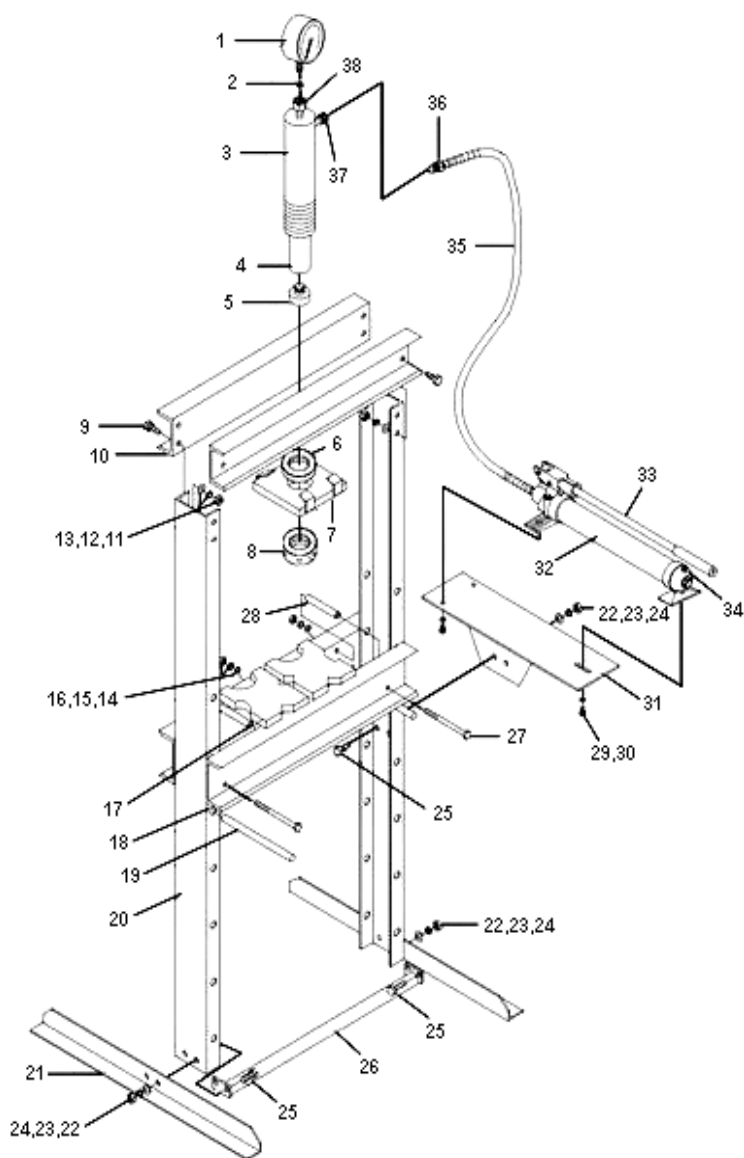
- H-frame 20 Tonne hydraulic shop press
- Sliding ram mechanism with V-blocks
- Floor mounting type with industrial grade hydraulic system
- Fully-welded steel frame for maximum rigidity and strength
- Manual hand pump offers more control for delicate applications

## 4. ASSEMBLY

Use the parts list and exploded drawing included on the next page as a reference to help you to assemble this equipment.

- Unpack the product and check the contents. Should there be any damaged or missing parts, contact your supplier immediately. Take care to ensure safety when removing the main frame from its packing, as the unit is very heavy.
- Use the parts diagram as your guide to assembly. Lay all parts and assemblies out before beginning assembly. The following procedure is recommended.
- Attach one base section (21) to the left post (20) and lower support (26), using bolts (25), washers (22), spring washers (23) and nuts (24) to secure, then repeat with the other base section (21), attaching it to the right post (20) and the lower support (26).
- Place the press frame in an upright position, attach one upper cross beam (10) to left and right posts (20) using bolts (9), washers (13), lock washers (12) and nuts (11).
- Place the other upper cross beam (10) in position and insert the under plate (7) to the two upper cross beams at the same time, then secure this cross beam to the posts using bolts (9), washers (13), lock washers (12) and nuts (11).
- Screw the upper round nut (6) onto the ram (3), insert the ram into the hole in the under plate (7), then screw the nut (8) onto the ram and attach the serrated saddle (5) to the ram.
- Join the two press bed frames (18) together by inserting the four bolts (27) through the bushings (28) and the holes in the bed frames, then secure the four bolts with the washers (14), lock washers (15) and nuts (16).

### 5. PARTS LIST & EXPLODED PARTS DIAGRAM (MAIN ASSEMBLY)

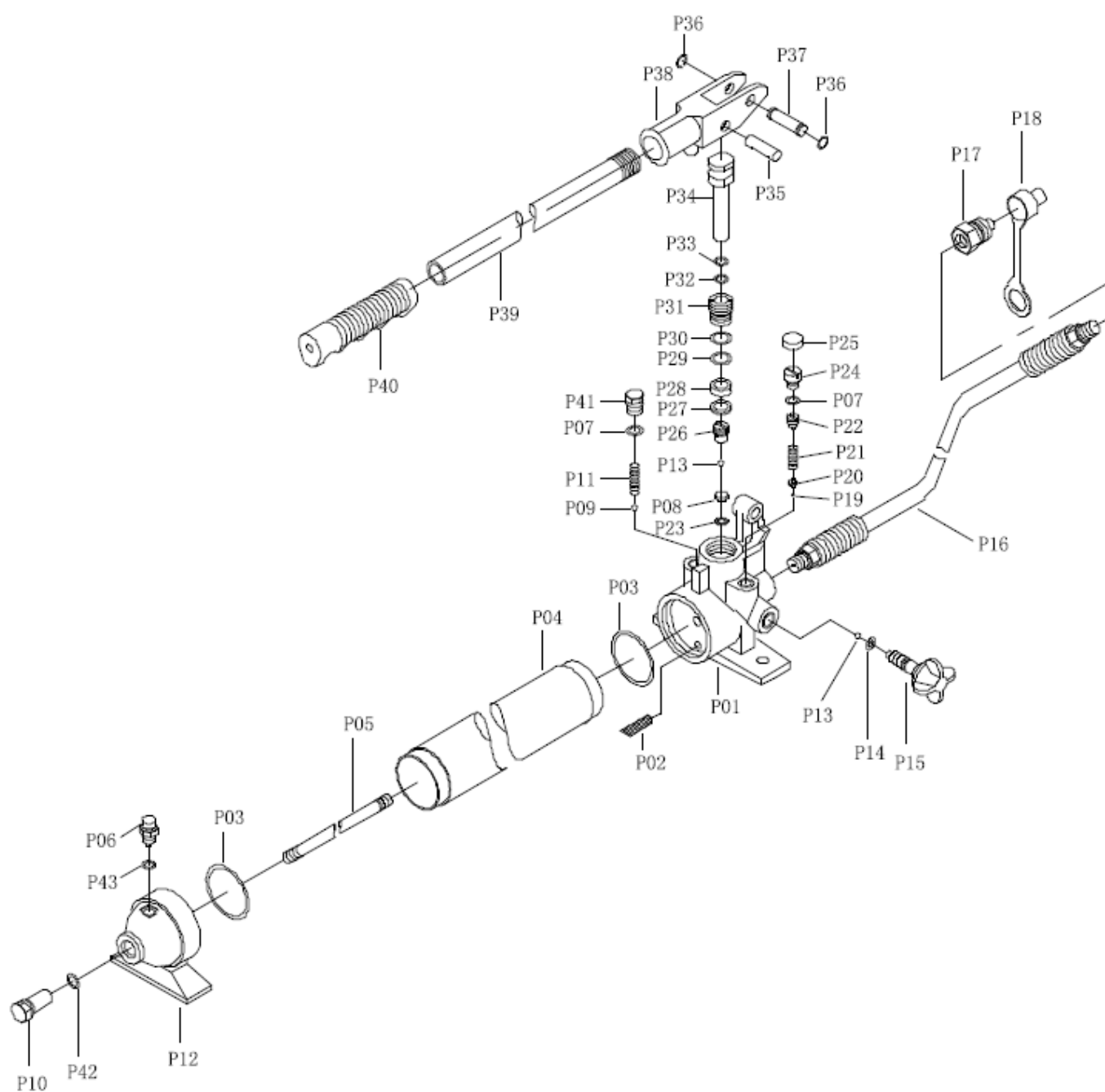


Part No.	Description	Qty
1	Pressure gauge	1
2	Nylon ring	1
3	Ram assy	1
4	Lock nut	1
5	Serrated saddle	1
6	Upper round nut	1
7	Under plate	1
8	Under round nut	1
9	Bolt	8
10	Upper crossbeam	2
11	Flat washer	8
12	Lock washer	8
13	Nut	8
14	Flat washer	12
15	Lock washer	12
16	Nut	12
17	Heel block	2
18	Press bed frame	2
19	Bolt	3
20	Ram Plate	1
21	Bolt	2
22	Screw	1
23	Clasp	4
19	Bed frame pin	2
20	Post	2
21	Base section	2
22	Flat washer	6
23	Lock washer	6
24	Nut	6
25	Bolt	4
26	Lower cross member	1
27	Bolt	4
28	Bushing	4
29	Bolt	3
30	Flat washer	3
31	Setting plate	1
32	Pump assy	1
33	Bolt	8
34	Support bar	4
35	Clasp	4
36	Bolt	2

### 6. EXPLODED PARTS LIST (PUMP)

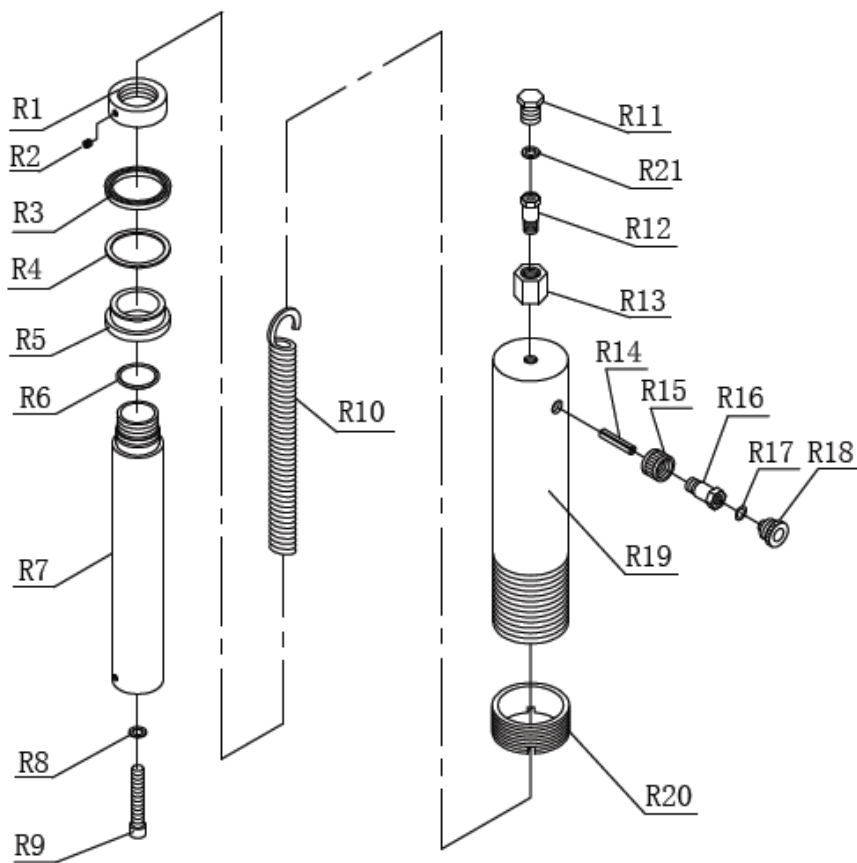
Part No.	Description	Qty	Part No.	Description	Qty	Part No.	Description	Qty
P01	Pump	1	P16	Hydraulic hose	1	P31	Base of pump core	1
P02	Filter	1	P17	Coupler	1	P32	O-ring	1
P03	O-ring	2	P18	Dust cover	1	P33	Nylon ring	1
P04	Reservoir	1	P19	Steel ball	1	P34	Pump core	1
P05	Tie rod	1	P20	Base of steel ball	1	P35	Pin	1
P06	Screw	1	P21	Spring	1	P36	Retaining ring	2
P07	O-ring	2	P22	Screw	1	P37	Pin	1
P08	Base of valve	1	P23	Nylon ring	1	P38	Base of handle	1
P09	Steel ball	1	P24	Screw	1	P39	Handle	1
P10	Screw	1	P25	Screw protector	1	P40	Handle sleeve	1
P11	Spring	1	P26	Screw	1	P41	Screw	1
P12	Pump foot	1	P27	Nylon ring	1	P42	O-ring	1
P13	Steel ball	2	P28	Sealing ring	1	P43	Nylon ring	1
P14	O-ring	1	P29	O-ring	1			
P15	Release valve	1	P30	Nylon ring	1			

### 7. EXPLODED PARTS DIAGRAM (PUMP)



### 8. PARTS LIST & PARTS DIAGRAM (RAM)

Part No.	Description	Qty
R1	Nut	1
R2	Screw	1
R3	Sealing ring	1
R4	PTFE Ring	1
R5	Bushing	1
R6	O-ring	1
R7	Piston	1
R8	Copper Ring	1
R9	Screw	1
R10	Spring	1
R11	Screw	1
R12	Gauge coupler	1
R13	Gauge connection nut	1
R14	Pin	1
R15	Connection nut	1
R16	Coupler	1
R17	O-ring	1
R18	Dust cap	1
R19	Ram	1
R20	Nylon ring	1
R21	Limited ring	1
R13	Dust Cap	1
R14	Ram Connector	1
R15	Ram	1
R16	Nut	1
R17	Plug	1





## 9. BEFORE FIRST USE

Before first use of this product, purge away air from the hydraulic system: open the release valve by turning it counter-clockwise.

Pump several full strokes to eliminate any air in the system.

Check all parts and conditions, if there is any part broken, stop using it and contact your supplier immediately.

## 10. OPERATING INSTRUCTIONS

**WARNING! Ensure that you read, understand and apply the safety instructions and warnings before use.**

- Bleed the pump before use.
- Use four C clamps to secure the press to the workbench for stability and safety.
- Clamp down the press frame to the workbench.
- Determine which tube to use according to the height of your work piece, and install it. Line up the base spacer so that it will hold the work piece directly under the ram when you lower it.
- Using the handle on the pump, pump down the ram so it contacts the work piece. Continue pumping until desired pressing occurs.
- Make any necessary modifications or adjustment to the work piece.
- When finished, carefully and slowly turn the release valve on the pump causing the ram to raise and release the pressure on the work piece.

## 11. MAINTENANCE

- Clean the outside of the press with dry, clean and soft cloth and periodically lubricate the joints and all moving parts with a light oil as needed.
- When not in use, store the press in a dry location with ram and piston fully retracted.
- When press efficiency drops, bleed the hydraulic system to eliminate any air in the system.
- Check the hydraulic oil: remove the oil filler screw (P06) on the pump, if it is not adequate, fill with high quality hydraulic jack oil as necessary, then replace the oil filler nut, purge away air from the hydraulic system as described previously.

## EC DECLARATION OF CONFORMITY

We, Tundra Industrial, as the authorised European Community representative of the manufacturer, declare that the following equipment conforms to the requirements of the following Directives:

**BS EN 1494:2000+A1:2008**

Mobile or movable jacks and associated lifting equipment

**2006/42/EC (as amended)**

Machinery Directive

**Equipment Category:** Hydraulic Shop Press / Lifting Equipment  
**Product Name/Model:** TUNSHPR20 - 20 Tonne Hydraulic Shop Press  
**Maximum Load:** 20 Tonne

**Signed by:** Stephen McIntyre  
**Position in the company:** Operations Director  
**Date:** 04 November 2016  
**This technical document is held by:** Jimmy Hemphill



Technical file holder's address as shown below

**Name and address of manufacturer or authorised representative:**

Tundra Industrial,  
Herons Way,  
Chester Business Park,  
Chester,  
United Kingdom,  
CH4 9QR

Telephone: **+44 (0)1244 646 048**  
Fax: **+44 (0)1244 241 1**



# USER MANUAL

## TUNSHPR20

## LIMITED WARRANTY STATEMENT

Tundra Industrial warrants its customers that its products will be free of defects in workmanship or material.

Tundra Industrial shall, upon suitable notification, correct any defects, by repair or replacement, of any parts or components of this product that are determined by Tundra Industrial to be faulty or defective.

This warranty is void if the equipment has been subjected to improper installation, storage, alteration, abnormal operations, improper care, unauthorised service or repair.

### Warranty Period

Tundra Industrial will assume both the parts and labour expense of correcting defects during the stated warranty periods below. All warranty periods start from the date of purchase from an authorised Tundra Industrial dealer. If proof of purchase is not available from the end user, then the date of purchase will be deemed to be 3 months after the initial sale to the distributor.

1 Year

- ***Tundra Industrial 20 Tonne Hydraulic Shop Press - [TUNSHPR20]***

90 Days

- ***All replacement parts purchased outside of the warranty period***

**Important:** All parts used in the repair or replacement of warranty covered equipment will be subject to a minimum of 90 days cover or the remaining duration of the warranty period from the original date of purchase.

### Warranty Registration / Activation

You can register and activate your warranty by visiting the Jefferson Tools website using the following address: [www.jeffersontools.com/warranty](http://www.jeffersontools.com/warranty) and completing the online form. Online warranty registration is recommended as it eliminates the need to provide proof of purchase should a warranty claim be necessary.

### Warranty Repair

Should Tundra Industrial confirm the existence of any defect covered by this warranty the defect will be corrected by repair or replacement at an authorized Tundra Industrial dealer or repair centre.

### Packaging & Freight Costs

The customer is responsible for the packaging of the equipment and making it ready for collection. Tundra Industrial will arrange collection and transportation of any equipment returned under warranty. Upon inspection of the equipment, if no defect can be found or the equipment is not covered under the terms of the Tundra Industrial warranty, the customer will be liable for any labour and return transportation costs incurred. These costs will be agreed with the customer before the equipment is returned.

### Warranty Limitations

Tundra Industrial will not accept responsibility or liability for repairs made by unauthorised technicians or engineers. Tundra Industrial's liability under this warranty will not exceed the cost of correcting the defect of the Tundra Industrial products. Tundra Industrial will not be liable for incidental or consequential damages (such as loss of business or hire of substitute equipment etc..) caused by the defect or the time involved to correct the defect. This written warranty is the only express warranty provided by Tundra Industrial with respect to its products.

Any warranties of merchantability are limited to the duration of this limited warranty for the equipment involved. Tundra Industrial is not responsible for cable wear due to flexing and abrasion. The end user is responsible for routine inspection of cables for possible wear and to correct any issues prior to cable failure.



# USER MANUAL

## TUNSHPR20

### Claiming Warranty Coverage

The end user must contact Tundra Industrial (Tel: **+44 (0) 1244 646 048**) or their nearest authorised Tundra Industrial dealer where final determination of the warranty coverage can be ascertained.

### Step 1 - Reporting the Defect

#### *Online Method:*

- Visit the website [www.jeffersonstools.com/warranty](http://www.jeffersonstools.com/warranty) and complete the Warranty Returns form. You can complete the form online and submit it to us directly or download the form to print out and return by post.

#### *Telephone Method:*

Contact your Tundra Industrial dealer or sales representative with the following information:

- Model number
- Serial number (usually located on the specification plate)
- Date of purchase

A Warranty Returns form will be sent to you for completion and return by post or fax, together with details of your nearest authorised Tundra Industrial repair centre. On receipt of this form Tundra Industrial will arrange to collect the equipment from you at the earliest convenience.

### Step 2 - Returning the Equipment

It is the customer's responsibility to ensure that the equipment is appropriately and securely packaged for collection. Please ensure that you include a copy of your proof of purchase. Please note that Tundra Industrial cannot assume any responsibility for any damage incurred to equipment during transit. Any claims against a third party courier will be dealt with under the terms & conditions of their road haulage association directives.

### Step 3 - Assessment and Repair

On receipt, the equipment will be assessed by an authorised Tundra Industrial engineer and it will be determined if the equipment is defective and in need of repair and any repairs needed are covered by the warranty policy. In order to qualify for warranty cover all equipment presented must have been used, serviced and maintained as instructed in the user manual.

Where repair is not covered by the warranty a quotation for repair, labour costs and return delivery will be sent to the customer (normally within 7 working days). **Note:** If the repair quotation is not accepted Tundra Industrial will invoice 1 hour labour time at £30 per hour plus return carriage costs (plus VAT).

In cases where no fault can be found with the equipment, or, if incorrect operation of the equipment is identified as the cause of the problem, a minimum of 1 hour labour at £30 per hour plus carriage costs will be required before the equipment will be despatched back to the customer.

Any equipment repaired or replaced under warranty will normally be ready for shipment back to the customer within 7 working days upon receipt of the equipment at an authorised Tundra Industrial Repair centre (subject to part availability). Where parts are not immediately available Tundra Industrial will contact you with a revised date for completion of the repair.

### General Warranty Enquiries

For any further information relating to Tundra Industrial warranty cover please call **+44 (0) 1244 646 048**.