

10 TONNE HYDRAULIC SHOP PRESS





Disclaimer:

The information in this document is to the best of our knowledge true and accurate, but all recommendations or suggestions are made without guarantee. Since the conditions of use are beyond their control, Tundra Industrial @ disclaim any liability for loss or damage suffered from the use of this data or suggestions. Tundra Industrial @ reserve the right to change product specifications and warranty statements without further notification. All images are for illustration purposes only.

1. SAFETY GUIDELINES

- 1.1 Please read the following guidelines carefully before using this equipment. This equipment must be kept clean and kept in good working order in order to ensure safe and effective operation. Inspect the equipment carefully before use and do not use if any defects are identified. Contact your nearest Tundra Industrial Dealer for further information on repairs and replacement parts. Only use Tundra Industrial approved replacement parts.
- 1.2 The maximum load for this equipment is 10 Tonnes. Do not exceed this rated capacity. Never apply excessive force to a workpiece and always use the pressure gauge to accurately determine the applied load.
- 1.3 Use this press for the purpose for which it is intended. Do Not use it for any other purpose it is not designed to perform. Do not modify or attempt to enhance the equipment in any way.
- 1.4 Keep children, unauthorized persons & animals away from the work area.
- 1.5 Remove any ill fitting clothing before use. (for example remove ties, watches, rings and other loose jewellery) long hair should be tied up to prevent entanglement.
- 1.6 Wear approved impact safety goggles, full-face impact safety shield and heavy-duty work gloves when operating the press. Ear defenders and non-slip / steel toe-capped footwear should be worn were applicable.
- 1.7 Keep proper balance and footing, do not overreach.
- 1.8 Only use this press on a surface that is stable, level, dry and not slippery, and capable of sustaining the load. Keep the surface clean, tidy and free from unrelated materials and ensure that there is adequate lighting.
- 1.9 Inspect the press before each use. Do not use if bent, broken, cracked, leaking or otherwise damaged, any suspect parts are noted or it has been subjected to a shock load.
- 1.10 Check to ensure that all applicable bolts and nuts are firmly tightened.
- 1.11 Ensure that workpiece is center-loaded and secure before use.
- 1.12 Keep hands and feet away from bed area at all times.
- 1.13 Do not use the shop press to compress spring or any other item that could disengage and cause a potential hazard. Never stand directly in front of loaded press and never leave loaded press unattended.
- 1.14 Do not operate the press when you are tired or under the influence of alcohol, drugs or any intoxicating medication.
- 1.15 Do not allow untrained persons to operate the press.
- 1.16 Do not make any modifications to the press.
- 1.17 Do not use brake fluid or any other improper fluid and avoid mixing different types of oil when adding hydraulic oil. Only good quality hydraulic jack oil can be used.
- 1.18 Do not expose the press to rain or any other kind of bad weather.
- 1.19 If the press needs repairing and/or there is any part that needs to be replaced, have it repaired by authorized technicians and only use the replacement parts supplied by the manufacturer.



WARNING:

No responsibility is accepted for incorrect use of this equipment. Incorrect use can result in damage to the equipment and danger to the user. Warranty will be void in the event of incorrect use. Hydraulic products are only repaired by Tundra Industrial authorised engineers. The warnings, cautions and instructions discussed in this instruction manual cannot cover all possible conditions and situations that may occur. It must be understood by the operator that common sense and caution are factors which cannot be built into this product, but must be supplied by the operator.

2. SPECIFICATIONS

Model Number	JEF5HPR10
Maximum Load:	10 Tonne
Ram Stroke:	175mm / 6.8"
Operating Range:	194 - 364mm
Rack / Working Width	340mm / 13.3"
Weight:	54.7kg
Assembled Dimensions: (L x W x H)	570 x 495 x 1058mm

3. DESCRIPTION

This industrial bench shop press is designed for automotive, engineering workshops and repair shops where pressing, bending, straightening and forming is required. Features include:

- H-frame 10 Tonne hydraulic shop press
- Sliding ram mechanism with V-blocks
- Floor mounting type with industrial grade hydraulic system
- Fully-welded steel frame for maximum rigidity and strength
- Manual hand pump offers more control for delicate applications

4. ASSEMBLY

Use the parts list and exploded drawing included on the next page as a reference to help you to assemble this equipment.

- Unpack the product and check contents. Should there be any damaged or missing parts contact your supplier immediately. Take care to ensure safety when removing main frame from packing as the unit is very heavy.

Bench Mounting Press Assembly:

- Identify and lay out parts. Bolt the cross legs to the bottom of the pre-assembled main frame. Bolt the ram supporting plate or plates to the head of the main frame.
- Note: If your model has a top and bottom plate which attach to either side of the frame head, screw the nuts finger tight only at this stage.
- Remove the plastic protection ring from the ram thread and apply a suitable thread locking compound, screw the ram into the support plate until it is tight, thread the locking ring onto the ram on the lower side of the support plate and tighten.
- If the ram passes through two support plates as in described above, you can now tighten the securing bolts.
- Attach the pump according to your model: Should your model have a separate pump assembly plate, check side of main frame to locate assembly holes. If you have a choice of left or right attachment, assemble the plate according to your operational requirement.
- Attach the pump to the pump plate or to the appropriate attachment bars incorporated in the main frame using the bolts provided.
- Pressure gauge: If not already attached to the ram. Remove the dust cap hex bolt from the top of the ram and screw the pressure gauge in until tight. DO NOT over-tighten.
- Remove the plastic safety bung from the end of the pump hose and connect the hose to the ram inlet valve.
- Insert the work table support pins through the holes in the main frame. Taking firm hold of the table, tip it into a diagonal position so that it can be introduced between the mainframe uprights and carefully lower it back to a horizontal position to rest on the support pins.

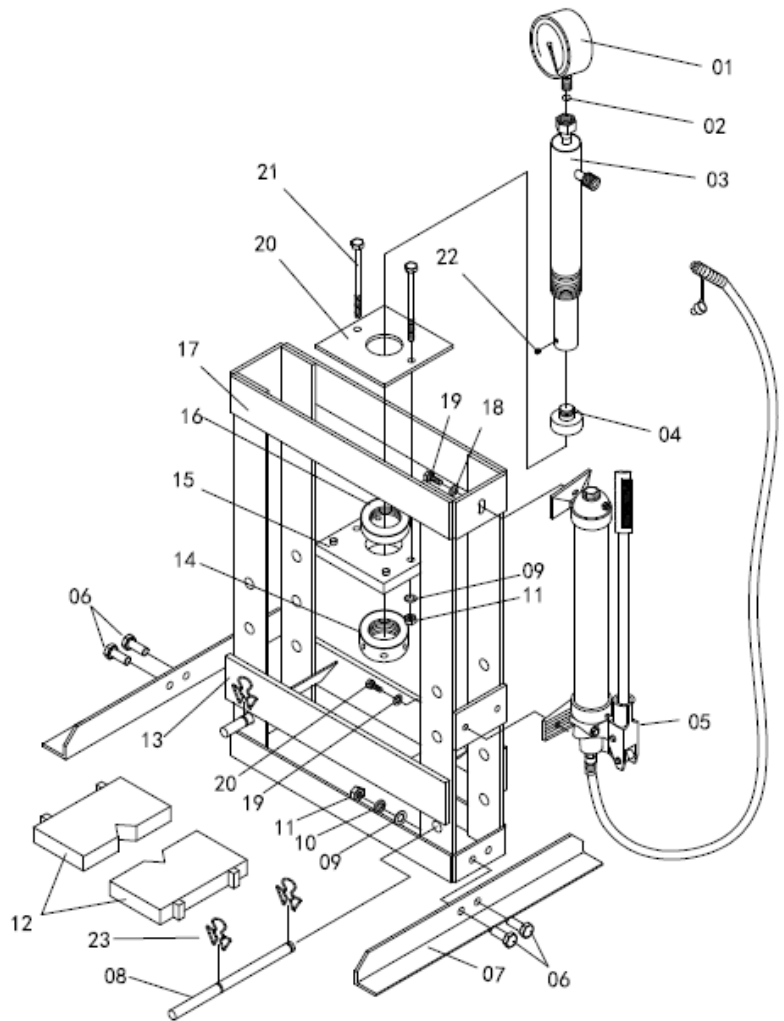
- **WARNING!** Take care not to allow the working table to drop onto the pins and ensure your hands and fingers are clear of the working table when lowering.

Floor Mounting Press Assembly:

- Identify and lay out parts. Bolt the cross legs to the bottom of the pre-assembled main frame and secure by bolting two support arms from each leg to the main frame.
- Bolt the base support bar between the main frame side supports. Follow remaining assembly instructions for bench mounting on the previous page.

5. PARTS LIST & EXPLODED PARTS DIAGRAM (MAIN ASSEMBLY)

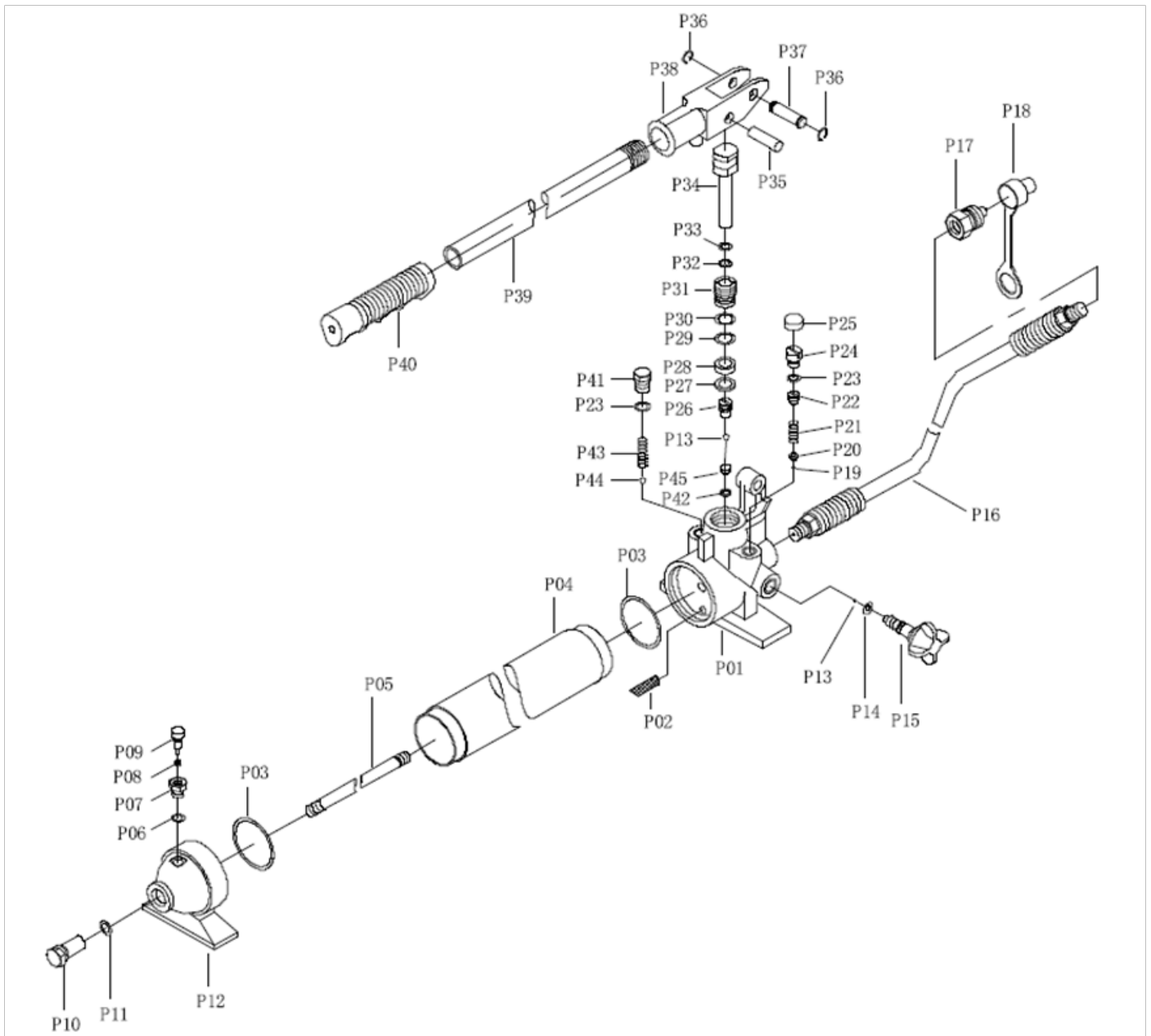
Part No.	Description	Qty
1	Pressure Gauge	1
2	Nylon Ring	1
3	Ram	1
4	Serrated Saddle	1
5	Pump	1
6	Bolt	4
7	Base Plate	2
8	Bed Frame Pin	2
9	Washer	6
10	Lock Washer	4
11	Nut	6
12	Heel Block	2
13	Press Plate Form	1
14	Under Round Nut	1
15	Under Ram Plate	1
16	Up Round Nut	1
17	Frame	1
18	Washer	3
19	Bolt	3
20	Ram Plate	1
21	Bolt	2
22	Screw	1
23	Clasp	4



6. EXPLODED PARTS LIST (PUMP)

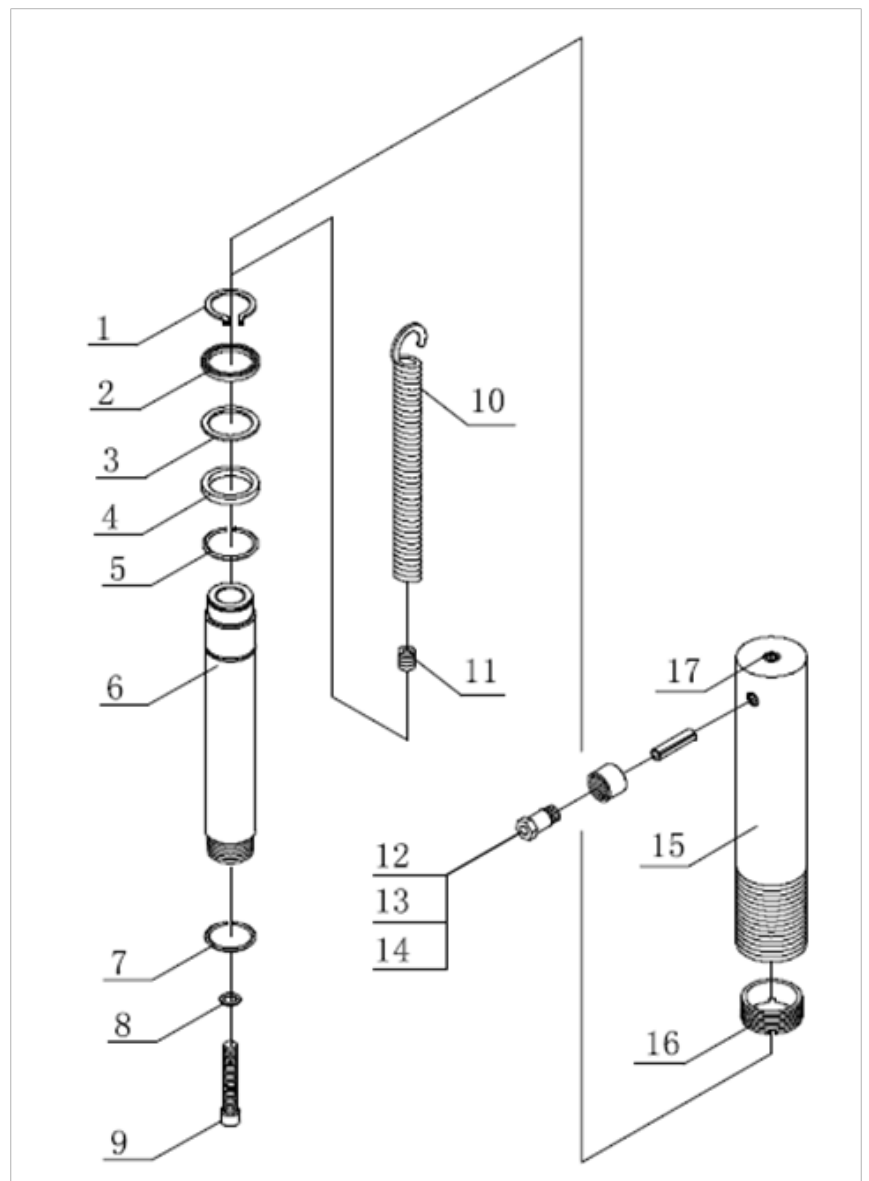
Part No.	Description	Qty	Part No.	Description	Qty
P01	Pump Body	1	P24	Plug	1
P02	Filter	1	P25	Cap	1
P03	O Ring	2	P26	Valve Cover	1
P04	Oil Tank	1	P27	Nylon washer	1
P05	Bar	1	P28	U Ring	1
P06	Nylon Washer	1	P29	O Ring	1
P07	Screw	1	P30	Nylon washer	1
P08	Seals	1	P31	Base For Pump Core	1
P09	Screw	1	P32	O Ring	1
P10	bolt	1	P33	Nylon washer	1
P11	O Ring	1	P34	Pump Core	1
P12	End Base	1	P35	Pin	1
P13	Steel Ball	2	P36	clip ring	2
P14	O Ring	1	P37	pin	1
P15	Release Valve	1	P38	Handle Base	1
P16	Oil Hose	1	P39	Handle	1
P17	hose coupler	1	P40	Handle Grip	1
P18	Dust Cap	1	P41	Plug	1
P19	Steel Ball	1	P42	Nylon washer	1
P20	Base for Steel Ball	1	P43	Spring	1
P21	Spring	1	P44	steel ball	1
P22	Screw	1	P45	Base For Valve	1
P23	O Ring	2			

7. EXPLODED PARTS DIAGRAM (PUMP)



8. PARTS LIST & PARTS DIAGRAM (RAM)

Part No.	Description	Qty
R01	Retainer Ring	1
R02	U Ring	1
R03	PTFE Washer	1
R04	Washer	1
R05	Ring	1
R06	Piston Rod	1
R07	Washer	1
R08	o ring	1
R09	o ring	1
R10	Spring	1
R11	Base for bolt	1
R12	Pin	1
R13	Dust Cap	1
R14	Ram Connector	1
R15	Ram	1
R16	Nut	1
R17	Plug	1
R10	Spring	1
R11	Base for bolt	1
R12	Pin	1
R13	Dust Cap	1
R14	Ram Connector	1
R15	Ram	1
R16	Nut	1
R17	Plug	1



9. BEFORE FIRST USE

Before first use of this product, purge away air from the hydraulic system: open the release valve by turning it counter-clockwise.

Pump several full strokes to eliminate any air in the system.

Check all parts and conditions, if there is any part broken, stop using it and contact your supplier immediately.

10. OPERATING INSTRUCTIONS

WARNING! Ensure that you read, understand and apply the safety instructions and warnings before use.

- Bleed the pump before use.
- Use four C clamps to secure the press to the workbench for stability and safety.
- Clamp down the press frame to the workbench.
- Determine which tube to use according to the height of your work piece, and install it. Line up the base spacer so that it will hold the work piece directly under the ram when you lower it.
- Using the handle on the pump, pump down the ram so it contacts the work piece. Continue pumping until desired pressing occurs.
- Make any necessary modifications or adjustment to the work piece.
- When finished, carefully and slowly turn the release valve on the pump causing the ram to raise and release the pressure on the work piece.

11. MAINTENANCE

- Clean the outside of the press with dry, clean and soft cloth and periodically lubricate the joints and all moving parts with a light oil as needed.
- When not in use, store the press in a dry location with ram and piston fully retracted.
- When press efficiency drops, bleed the hydraulic system to eliminate any air in the system.
- Check the hydraulic oil: remove the oil filler screw (P06) on the pump, if it is not adequate, fill with high quality hydraulic jack oil as necessary, then replace the oil filler nut, purge away air from the hydraulic system as described previously.

EC DECLARATION OF CONFORMITY

We, Tundra Industrial, as the authorised European Community representative of the manufacturer, declare that the following equipment conforms to the requirements of the following Directives:

BS EN 1494:2000+A1:2008

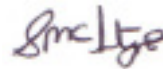
Mobile or movable jacks and associated lifting equipment

2006/42/EC (as amended)

Machinery Directive

Equipment Category: Hydraulic Shop Press / Lifting Equipment
Product Name/Model: TUNSHPR10 - 10 Tonne Hydraulic Shop Press
Maximum Load: 10 Tonne

Signed by: Stephen McIntyre
Position in the company: Operations Director
Date: 04 November 2016
This technical document is held by: Jimmy Hemphill



Technical file holder's address as shown below

Name and address of manufacturer or authorised representative:

Tundra Industrial,
Herons Way,
Chester Business Park,
Chester,
United Kingdom,
CH4 9QR

Telephone: +44 (0)1244 646 048
Fax: +44 (0)1244 241 1



USER MANUAL

TUNSHPR10

LIMITED WARRANTY STATEMENT

Tundra Industrial warrants its customers that its products will be free of defects in workmanship or material.

Tundra Industrial shall, upon suitable notification, correct any defects, by repair or replacement, of any parts or components of this product that are determined by Tundra Industrial to be faulty or defective.

This warranty is void if the equipment has been subjected to improper installation, storage, alteration, abnormal operations, improper care, unauthorised service or repair.

Warranty Period

Tundra Industrial will assume both the parts and labour expense of correcting defects during the stated warranty periods below. All warranty periods start from the date of purchase from an authorised Tundra Industrial dealer. If proof of purchase is not available from the end user, then the date of purchase will be deemed to be 3 months after the initial sale to the distributor.

1 Year

• ***Tundra Industrial 10 Tonne Hydraulic Shop Press - (TUNSHPR10)***

90 Days

• ***All replacement parts purchased outside of the warranty period***

Important: All parts used in the repair or replacement of warranty covered equipment will be subject to a minimum of 90 days cover or the remaining duration of the warranty period from the original date of purchase.

Warranty Registration / Activation

You can register and activate your warranty by visiting the Jefferson Tools website using the following address: www.jeffersontools.com/warranty and completing the online form. Online warranty registration is recommended as it eliminates the need to provide proof of purchase should a warranty claim be necessary.

Warranty Repair

Should Tundra Industrial confirm the existence of any defect covered by this warranty the defect will be corrected by repair or replacement at an authorized Tundra Industrial dealer or repair centre.

Packaging & Freight Costs

The customer is responsible for the packaging of the equipment and making it ready for collection. Tundra Industrial will arrange collection and transportation of any equipment returned under warranty. Upon inspection of the equipment, if no defect can be found or the equipment is not covered under the terms of the Tundra Industrial warranty, the customer will be liable for any labour and return transportation costs incurred. These costs will be agreed with the customer before the equipment is returned.

Warranty Limitations

Tundra Industrial will not accept responsibility or liability for repairs made by unauthorised technicians or engineers. Tundra Industrial's liability under this warranty will not exceed the cost of correcting the defect of the Tundra Industrial products. Tundra Industrial will not be liable for incidental or consequential damages (such as loss of business or hire of substitute equipment etc..) caused by the defect or the time involved to correct the defect. This written warranty is the only express warranty provided by Tundra Industrial with respect to its products.

Any warranties of merchantability are limited to the duration of this limited warranty for the equipment involved. Tundra Industrial is not responsible for cable wear due to flexing and abrasion. The end user is responsible for routine inspection of cables for possible wear and to correct any issues prior to cable failure.

Claiming Warranty Coverage

The end user must contact Tundra Industrial (Tel: **+44 (0) 1244 646 048**) or their nearest authorised Tundra Industrial dealer where final determination of the warranty coverage can be ascertained.

Step 1 - Reporting the Defect

Online Method:

- Visit the website www.jeffersonstools.com/warranty and complete the Warranty Returns form. You can complete the form online and submit it to us directly or download the form to print out and return by post.

Telephone Method:

Contact your Tundra Industrial dealer or sales representative with the following information:

- Model number
- Serial number (usually located on the specification plate)
- Date of purchase

A Warranty Returns form will be sent to you for completion and return by post or fax, together with details of your nearest authorised Tundra Industrial repair centre. On receipt of this form Tundra Industrial will arrange to collect the equipment from you at the earliest convenience.

Step 2 - Returning the Equipment

It is the customer's responsibility to ensure that the equipment is appropriately and securely packaged for collection. Please ensure that you include a copy of your proof of purchase. Please note that Tundra Industrial cannot assume any responsibility for any damage incurred to equipment during transit. Any claims against a third party courier will be dealt with under the terms & conditions of their road haulage association directives.

Step 3 - Assessment and Repair

On receipt, the equipment will be assessed by an authorised Tundra Industrial engineer and it will be determined if the equipment is defective and in need of repair and any repairs needed are covered by the warranty policy. In order to qualify for warranty cover all equipment presented must have been used, serviced and maintained as instructed in the user manual.

Where repair is not covered by the warranty a quotation for repair, labour costs and return delivery will be sent to the customer (normally within 7 working days). **Note:** If the repair quotation is not accepted Tundra Industrial will invoice 1 hour labour time at £30 per hour plus return carriage costs (plus VAT).

In cases where no fault can be found with the equipment, or, if incorrect operation of the equipment is identified as the cause of the problem, a minimum of 1 hour labour at £30 per hour plus carriage costs will be required before the equipment will be despatched back to the customer.

Any equipment repaired or replaced under warranty will normally be ready for shipment back to the customer within 7 working days upon receipt of the equipment at an authorised Tundra Industrial Repair centre (subject to part availability). Where parts are not immediately available Tundra Industrial will contact you with a revised date for completion of the repair.

General Warranty Enquiries

For any further information relating to Tundra Industrial warranty cover please call **+44 (0) 1244 646 048**.