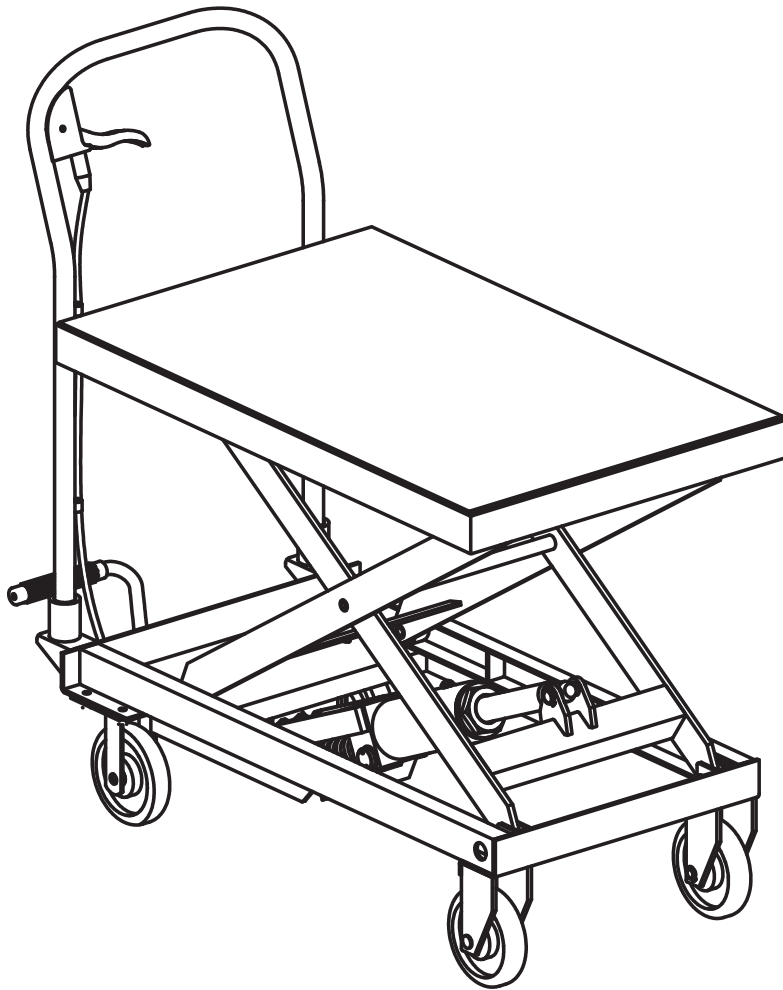


**500KG**



**LIFT TABLE**



**Disclaimer:**

*The information in this document is to the best of our knowledge true and accurate, but all recommendations or suggestions are made without guarantee. Since the conditions of use are beyond their control, Tundra Industrial ® disclaim any liability for loss or damage suffered from the use of this data or suggestions. Tundra Industrial ® reserve the right to change product specifications and warranty statements without further notification. All images are for illustration purposes only.*

## 1. SAFETY GUIDELINES

**WARNING:** Ensure all Health and Safety, local authority and general workshop practice regulations and recommendations are strictly adhered to when lifting or moving heavy loads. The lifting or movement of heavy loads may be dangerous if not undertaken correctly.

- Familiarise yourself with the application and limitations, as well as the specific potential hazards peculiar to the truck
- Ensure that this equipment is cleaned after use and maintained in good condition.
- Replace or repair damaged parts. Use genuine parts only. Unauthorised parts may be dangerous and will invalidate the warranty.
- Use a qualified person to lubricate and maintain the truck. Do not use brake fluid to top up hydraulic unit. Use hydraulic oil only.
- Keep the truck clean for best and safest performance. Do not use on tarmac when fully laden as the wheels may sink in.
- Use this equipment on flat, level, solid ground, preferably concrete. Ensure the floor over which the truck will be transported is swept clean and that there are no obstacles in the way during operation.
- Keep the work area clean, uncluttered and ensure there is adequate lighting.
- Keep children and non essential persons away from the loading/unloading and transporting area.
- Keep hands and body clear of the edge and underside of the platform when operating the truck.
- Maintain correct balance and footing. Ensure the floor is not slippery and wear non-slip shoes.
- Ensure the load is placed level and centrally on truck platform and if necessary strap load in place before attempting to lift, lower, or transport. When raised, check that the platform/load will not foul on the handle and/or your hand when lowering.
- Use the truck with diligence. Do not allow truck to knock into anything. Even when unladen, the truck is heavy and if misused could cause serious damage or personal injury. Continually monitor transportation, lifting and lowering operations.
- Take care to ensure you can view the way ahead when moving the truck. Take special care when approaching blind corners.
- Before lifting, check that there are no overhead obstructions.
- Engage the wheel locks before attempting to raise or lower the platform.
- **DANGER!** If a heavy load tips or leans: immediately stop what you are doing. Move quickly to a safe distance. Do not try to hold or steady a heavy load. Failure to follow this instruction may cause serious personal injury.
- Ensure the truck is fully lowered before attempting to transport a load.
- Before lowering the platform, ensure there are no obstructions underneath the platform and that all persons are standing clear of the truck.
- The lowering speed is a fixed rate regardless of the load weight. Stop lowering by releasing the valve control lever on the handle.
- **WARNING!** DO NOT exceed the rated capacity of the truck.
- DO NOT use the truck if a part is missing or damaged.
- DO NOT load the truck so that it is top-heavy. Ensure loads are evenly placed on the truck platform.
- DO NOT ride on the truck or allow any person to be transported on the truck.
- DO NOT use the truck for any purpose other than lifting, lowering and transporting loads.
- DO NOT allow truck to freewheel in transit. Always propel and control the truck by using the handle.
- DO NOT use the truck on sloping surfaces.
- DO NOT operate the truck when you are tired or under the influence of alcohol, drugs or intoxicating medication.
- DO NOT allow children to operate the truck.
- DO NOT adjust or tamper with the hydraulic safety valve.
- DO NOT place any part of your body within or under the truck platform when raised.



### WARNING:

No responsibility is accepted for incorrect use of this equipment. Incorrect use can result in damage to the equipment and danger to the user. Warranty will be void in the event of incorrect use. Hydraulic products are only repaired by Tundra Industrial authorised engineers. The warnings, cautions and instructions discussed in this instruction manual cannot cover all possible conditions and situations that may occur. It must be understood by the operator that common sense and caution are factors which cannot be built into this product, but must be supplied by the operator.

## 2. SPECIFICATIONS

<b>Model Number</b>	TUNLFTAB500
<b>Maximum Load:</b>	500 Kilograms
<b>Minimum Height:</b>	280mm
<b>Maximum Height:</b>	860mm
<b>Table Size:</b>	815mm x 500mm
<b>Weight (NW/GW):</b>	76kg / 81KG

## 3. DESCRIPTION

Heavy-duty construction. Fitted with two fixed and two swivel composite wheels for easy rolling over rough workshop and warehouse floors. Swivel wheels fitted with foot-operated brake. One-piece hydraulic unit controlled by large rear mounted foot pedal. Safety release mechanism positioned on handlebar for smooth controlled descent. Models feature safety bars to prevent inadvertent lowering. Suitable for numerous garage, industrial and warehouse handling applications. Supplied with non-slip platform cover for added load security. May also be used as a mobile service bench.

## 4. ASSEMBLY

**IMPORTANT:** This item is heavy and requires a minimum of two people to lift out of its packaging. Alternatively, cut and fold down flat one end of the box and wheel the truck out.

**Fitting the handle:** At the back of the truck there are two upstanding sockets to receive the bent loop handle (fig.1D). Partially unscrew the two locking bolts that pass into the sockets so that they no longer protrude into the sockets. Drop the ends of the bent chrome handle into the sockets and tighten the bolts until the handle is held firmly.

**Fitting the foot pedal:** Slide the end of the foot pedal into the socket situated centrally between the two handle uprights. (See fig.1E). The footpedal retaining bolt (See fig.1F) screws directly into the material of the foot pedal stem.

**Connecting the control cable:** Remove the cable guide bush (fig.2B) from the free end of the cable and feed the end of the cable and cable sheath through the cable guide tubes welded to the handle and the underside of the frame. See fig.1G and fig.2A. Once the cable has been fed through the guides slide the bush back over the cable and onto the sheath. F Feed the cable through the hole in the bush retaining bracket and then through the hole in the clamping bolt on the actuating lever (fig.2C). Now screw the guide bush into the bracket (See Fig.2B). Pull the end of the cable so that there is no play in the movement of the lever mounted on the handle. Hold the clamping bolt (fig.2C) steady with a 14mm ring spanner and tighten the nut on the other side of the lever with another 14mm ring spanner.

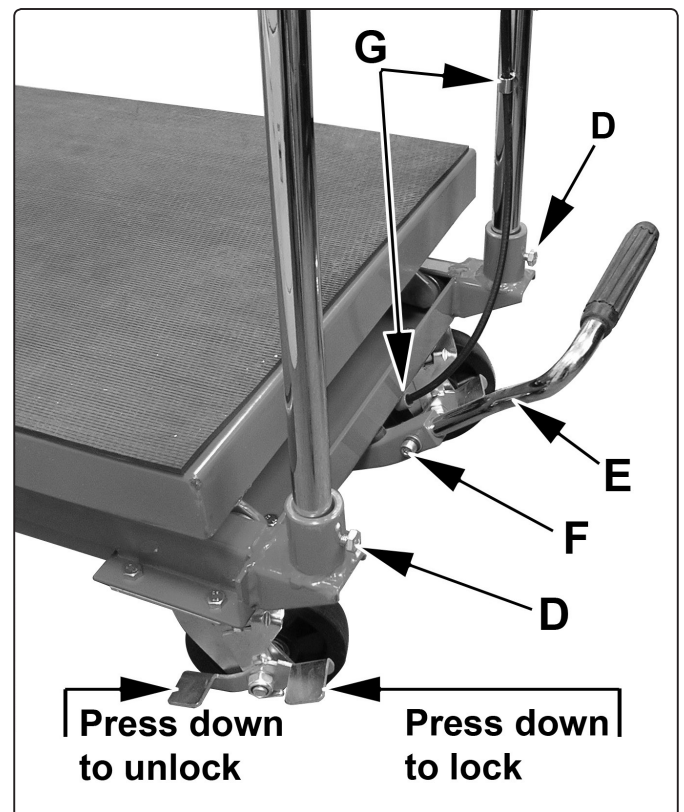


fig.1

## 5. OPERATION GUIDE

**Before first use:** Before using the truck for the first time purge any air from the hydraulic circuit by pumping the foot pedal 10 to 15 times whilst holding the release lever (fig.3A) in.

**To test the truck:** Release the lever which will close the hydraulic valve. Pump the foot pedal (fig.1E) and raise the truck platform to its highest position. Pull the valve lever (fig.3A) to lower the platform (the platform may be slow to descend immediately from its highest point). If the platform fails to descend adjust the cable length to remove excess play in the release lever movement.

**Using the truck:** Ensure you read, understand and follow the safety instructions. Ensure all Health and Safety, local authority and general workshop practice regulations and recommendations are strictly adhered to when lifting or moving heavy loads. The lifting or movement of heavy loads may be dangerous if not undertaken correctly.

- Move the truck to the required loading area and raise the platform to loading height and engage safety bars (fig.5A).
- Lock the truck wheels individually with the wheel foot brakes. (See fig.1)
- Load the truck.
- Remove safety bars and lower the truck platform to the lowest position before unlocking the wheels.

**WAR NING!** Ensure the load will not foul on anything, and is clear of your hands and the handle when lowering (fig.4).

- Unlock the wheels and transport the load to the required destination.
- To unload, lock the wheels and raise platform if required, then unload the truck.

Note: With or without a load, always transport the truck with platform in its lowest position. When not in use, store the truck with the platform in the lowest position.

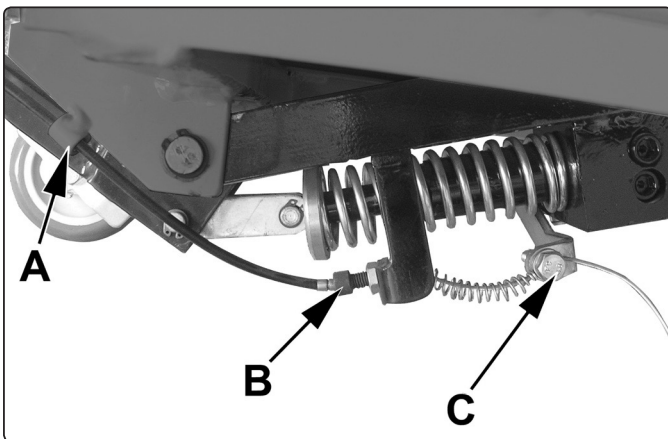


fig.2

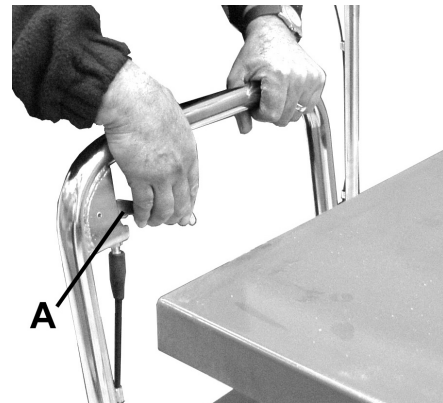


fig.3

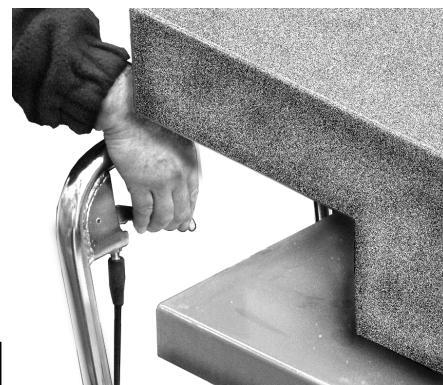
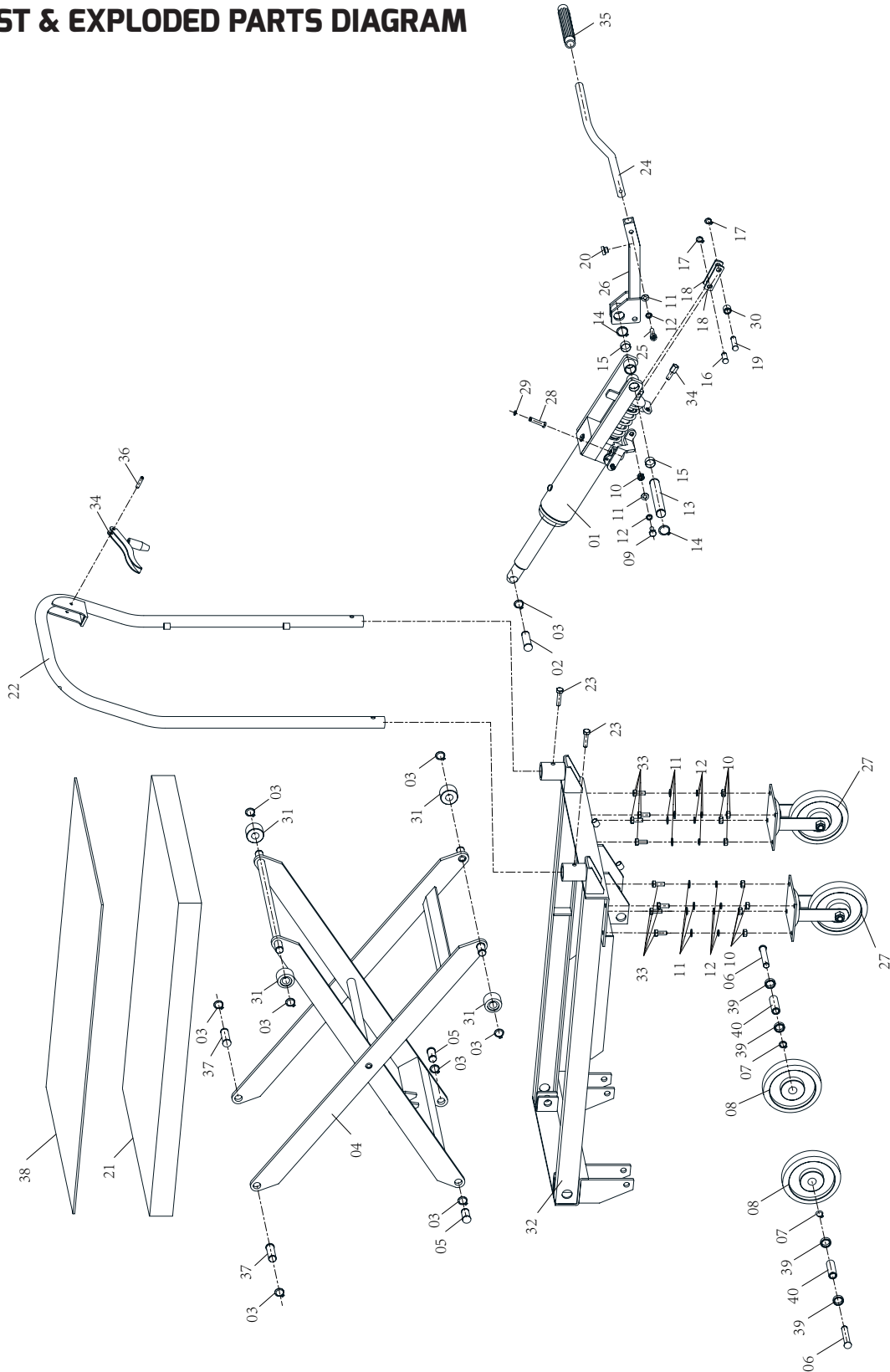


fig.4

**6. PARTS LIST & EXPLODED PARTS DIAGRAM**



No.	Description	QTY
1	Pump	1
2	Pin	1
3	Shaft Retaining ring 16	9
4	Lift frame	1
5	Shaft	2
6	Pin	2
7	Shaft Retaining ring 12	2
8	Wheel	2
9	Bolt M8x20	1
10	Nut M8	9
11	Washer 8	19
12	Spring washer 8	10
13	Shaft	1
14	Shaft retaining ring 20	2
15	Bearing	2
16	Pin	1
17	Shaft retaining ring 10	2
18	Connecting plate	2
19	Pin	1
20	Bumper	1

No.	Description	QTY
21	Top table	1
22	Brake handle	1
23	Bolt M8x35	2
24	Lifting pedal	1
25	Bolt M8x25	1
26	Lifting pedal assembly	1
27	Caster assembly	2
28	Pin	1
29	Shaft retaining 8	1
30	Bushing	1
31	Wheel	4
32	Base assembly	1
33	Bolt M8x28	8
34	Zipper part	1
35	Step handle	1
36	Pin 6x22	1
37	Pin	2
38	Rubber mat	1
39	Bushing	4
40	Shaft	2

## 7. MAINTENANCE

When the truck is not in use, the platform must be in the lowest position to minimise ram and piston corrosion.

Keep the truck clean and wipe off any oil or grease. Lubricate all moving parts with acid free oil.

DO NOT use truck if believed to have been subjected to abnormal load or shock load. Inspect and if necessary take appropriate action.

Periodically check the pump piston and piston rod for signs of corrosion. Clean exposed areas with a clean oiled cloth.

**IMPORTANT:** Only fully qualified personnel should attempt maintenance or repair of the truck hydraulic system. The oil cylinder is a sealed unit and must not be accessed. For service contact your nearest authorised dealer.

**IMPORTANT:** All other maintenance and repair (including oil change) must only be undertaken by fully qualified personnel. Contact your local authorised service agent. The oil cylinder is a sealed unit and in principle should not be accessed. To top up or change the oil remove oil plug.

**WAR NING!** Only a good quality hydraulic oil DO NOT use brake fluid.

**IMPORTANT:** no responsibility is accepted for incorrect use of this equipment.

## EU DECLARATION OF CONFORMITY

We, Tundra Industrial, as the authorised European Community representative of the manufacturer, declare that the following equipment conforms to the requirements of the following:

**2006/42/EC (as amended)**

Machinery Directive

**EN ISO 12100:2010**

Safety of machinery - General principles for design - Risk assessment and risk reduction

**EN ISO 3691-5:2014 Industrial trucks**

Safety requirements and verification Part 5: Pedestrian-propelled trucks

**Equipment Category:** Hydraulic Platform Truck / Lifting Equipment  
**Product Name/Model:** TUNLFTAB500 - 500Kg Lift Table  
**Maximum Load:** 500Kg

**Signed by:** Stephen McIntyre  
**Position in the company:** Operations Director  
**Date:** 16 March 2023



Technical file holder's address as shown below

**Name and address of manufacturer or authorised representative:**

Tundra Industrial,  
24 Lisgorgan Lane,  
Upperlands,  
BT46 5TE

**Tel:** +44 (0)1244 646 048 (UK) / +353 (0)1473 0300 (ROI)





## LIMITED WARRANTY STATEMENT

Tundra Industrial warrants its customers that its products will be free of defects in workmanship or material.

Tundra Industrial shall, upon suitable notification, correct any defects, by repair or replacement, of any parts or components of this product that are determined by Tundra Industrial to be faulty or defective.

This warranty is void if the equipment has been subjected to improper installation, storage, alteration, abnormal operations, improper care, unauthorised service or repair.

### Warranty Period

Tundra Industrial will assume both the parts and labour expense of correcting defects during the stated warranty periods below. All warranty periods start from the date of purchase from an authorised Tundra Industrial dealer. If proof of purchase is not available from the end user, then the date of purchase will be deemed to be 3 months after the initial sale to the distributor.

1 Year

• **TUNLFTAB500 - 500Kg LIFT TABLE**

90 Days

• **All replacement parts purchased outside of the warranty period**

**Important:** All parts used in the repair or replacement of warranty covered equipment will be subject to a minimum of 90 days cover or the remaining duration of the warranty period from the original date of purchase.

### Warranty Registration / Activation

You can register and activate your warranty by visiting the Jefferson Tools website using the following address: [www.jeffersonstools.com/warranty](http://www.jeffersonstools.com/warranty) and completing the online form. Online warranty registration is recommended as it eliminates the need to provide proof of purchase should a warranty claim be necessary.

### Warranty Repair

Should Tundra Industrial confirm the existence of any defect covered by this warranty the defect will be corrected by repair or replacement at an authorized Tundra Industrial dealer or repair centre.

### Packaging & Freight Costs

The customer is responsible for the packaging of the equipment and making it ready for collection. Tundra Industrial will arrange collection and transportation of any equipment returned under warranty. Upon inspection of the equipment, if no defect can be found or the equipment is not covered under the terms of the Tundra Industrial warranty, the customer will be liable for any labour and return transportation costs incurred. These costs will be agreed with the customer before the equipment is returned.

### Warranty Limitations

Tundra Industrial will not accept responsibility or liability for repairs made by unauthorised technicians or engineers. Tundra Industrial's liability under this warranty will not exceed the cost of correcting the defect of the Tundra Industrial products. Tundra Industrial will not be liable for incidental or consequential damages (such as loss of business or hire of substitute equipment etc..) caused by the defect or the time involved to correct the defect. This written warranty is the only express warranty provided by Tundra Industrial with respect to its products.

Any warranties of merchantability are limited to the duration of this limited warranty for the equipment involved. Tundra Industrial is not responsible for cable wear due to flexing and abrasion. The end user is responsible for routine inspection of cables for possible wear and to correct any issues prior to cable failure.

## Claiming Warranty Coverage

The end user must contact Tundra Industrial (Tel: +44 (0)1244 646 048 (UK) / +353 (0)1473 0300 (ROI)) or their nearest authorised Tundra Industrial dealer where final determination of the warranty coverage can be ascertained.

### Step 1 - Reporting the Defect

#### *Online Method:*

- Visit the website <https://jeffersonstools.com/warranty-repairs> and complete the Warranty Returns form. You can complete the form online and submit it to us directly or download the form to print out and return by post.

#### *Telephone Method:*

Contact your Tundra Industrial dealer or sales representative with the following information:

- Model number
- Serial number (usually located on the specification plate)
- Date of purchase

A Warranty Returns form will be sent to you for completion and return by post or fax, together with details of your nearest authorised Tundra Industrial repair centre. On receipt of this form Tundra Industrial will arrange to collect the equipment from you at the earliest convenience.

### Step 2 - Returning the Equipment

It is the customer's responsibility to ensure that the equipment is appropriately and securely packaged for collection. Please ensure that you include a copy of your proof of purchase. Please note that Tundra Industrial cannot assume any responsibility for any damage incurred to equipment during transit. Any claims against a third party courier will be dealt with under the terms & conditions of their road haulage association directives.

### Step 3 - Assessment and Repair

On receipt, the equipment will be assessed by an authorised Tundra Industrial engineer and it will be determined if the equipment is defective and in need of repair and any repairs needed are covered by the warranty policy. In order to qualify for warranty cover all equipment presented must have been used, serviced and maintained as instructed in the user manual.

Where repair is not covered by the warranty a quotation for repair, labour costs and return delivery will be sent to the customer (normally within 7 working days). **Note:** If the repair quotation is not accepted Tundra Industrial will invoice 1 hour labour time at £30 per hour plus return carriage costs (plus VAT).

In cases where no fault can be found with the equipment, or, if incorrect operation of the equipment is identified as the cause of the problem, a minimum of 1 hour labour at £30 per hour plus carriage costs will be required before the equipment will be despatched back to the customer.

Any equipment repaired or replaced under warranty will normally be ready for shipment back to the customer within 7 working days upon receipt of the equipment at an authorised Tundra Industrial Repair centre (subject to part availability). Where parts are not immediately available Tundra Industrial will contact you with a revised date for completion of the repair.

### General Warranty Enquiries

For any further information relating to Tundra Industrial warranty cover please call:

+44 (0)1244 646 048 (UK) / +353 (0)1473 0300 (ROI)



