

# TOE JACK



**TUNJKTOE10-20**  
**TUNJKTOE15-30**

v.1.1

**Disclaimer:**

*The information in this document is to the best of our knowledge true and accurate, but all recommendations or suggestions are made without guarantee. Since the conditions of use are beyond their control, Tundra Industrial disclaim any liability for loss or damage suffered from the use of this data or suggestions. Furthermore, no liability is accepted if use of any product in accordance with this data or suggestions infringes any patent. Tundra Industrial reserve the right to change product specifications and warranty statements without further notification. All images are for illustration purposes only. The warnings, cautions and instructions detailed in this manual cannot cover all possible situations that may occur during operation. It must be understood that common sense and caution are factors which cannot be built into this product, but must be applied by the operator.*

## INTRODUCTION

- Hydraulic toe jack with multi-function head and toe lifting mechanisms
- Quick, smooth effortless operation by hand
- Lifting points on the toe and head allows for a versatile lifting
- Ideal for lifting low weight points and working in confined spaces
- Toe constructed from strong mould casted alloy steel with no welded or bent parts to weaken the material
- High strength return spring enables rapid ram retraction
- Swivelling pump handle assembly allows the operator to access and pump the unit from a variety of positions
- Built-in safety valve prevents over-pressurization
- Internal overflow valve functions as a stroke limiter
- Convenient carry handle

## SPECIFICATIONS

Model Number:	TUNJKTOE10-20	TUNJKTOE15-30
Lifting Capacity (Toe):	10 Tonne	15 Tonne
Lifting Capacity (Head):	20 Tonne	30 Tonne
Stroke:	160mm	160mm
Closed Height:	285mm	305mm
Jaw Height:	20mm	20mm
Net Weight:	28kg	43.3kg

## EQUIPMENT IDENTIFICATION



## SAFETY GUIDELINES

- Read these instructions carefully before use and wear the appropriate safety equipment during operation.
- **Inspect this equipment regularly and check for damage before use.**
- Never use this equipment if any damage or fault is detected. Immediately repair or replace damaged parts.
- Only use Tundra Industrial approved replacement parts when repairing the jack.
- The use of unapproved parts may be dangerous and will invalidate your warranty.
- Lubricate and clean the jack regularly to maintain the equipment and keep it in safe working condition.
- Use a qualified person to lubricate and maintain the jack. **Only use hydraulic oil.**
- Ensure the work area is clean, tidy, well lit and free from clutter. Keep children and animals away from the working environment.
- Always use the jack on solid, level ground, preferably concrete. Avoid soft materials such as tarmac as the jack may sink and become unstable under load.
- Do not modify jack in any way. **Do not use the jack for any other purpose other than that for which it was designed.**
- Keep hands etc. clear of moving parts during raising and lowering of the load.
- If being used to lift a vehicle, park the vehicle and apply hand brake. Switch off the engine and place chocks under the wheels.
- Ensure a minimum distance of 0.5m between load and static objects such as doors, walls, etc. to allow for tilting during jacking.
- Check that the lifting point is centred and stable on the jack saddle (off centre loads can slip).
- Always position jack so as to avoid operating it from under the load.
- Only use the jack for lifting only, this equipment is not designed to supporting the lifted load.
- **Always use adequately rated mechanical supports.**
- **Never exceed the rated capacity of the jack** and do not operate the jack beyond its maximum pump stroke.
- If lifting a vehicle, do not allow the vehicle to move, or try to start the engine, when the vehicle is jacked up.
- Do not jack a vehicle if it may result in the spillage of fuel, battery acid, or other dangerous substances.
- Do not place any part of your body under load whilst it is supported by the jack. Wait until adequately rated supports have been correctly positioned.
- Do not use jack to support extensions or cradles.
- Do not adjust the safety overload valve.
- Ensure there are no persons or obstructions beneath the load before lowering.
- Clean and stow the jack in a secure and dry environment with the ram in the down position after use. Never leave the ram extended.



## OPERATING INSTRUCTIONS

### Before Use:

Before using the jack, ensure that the hydraulic system is fully purged to eliminate any air that may have accumulated during transit:

- 1) Fit jack handle over release valve and turn anti-clockwise to open the valve.
- 2) Insert jack handle into the sleeve and pump several times to ensure full internal lubrication and to bleed any excess air from the system.
- 3) Fit jack handle back over the release valve and turn clockwise to close.

### Lifting:

- Always use the jack on solid, level ground, preferably concrete.
- Place either toe or head beneath load to be lifted, depending on the application and clearance available.
- If using the toe, ensure that it is inserted beneath the load fully to ensure maximum stability.
- Pump the handle up and down using full strokes until the required lifting height is achieved.
- If the jack becomes overloaded, the safety overload valve will open, and prevent the load from lifting any further.

## MAINTENANCE

### Important: Inspect this equipment regularly and check for damage before use.

- Never use this equipment if any damage or fault is detected. Immediately repair or replace damaged parts.
- Only use Tundra Industrial approved replacement parts when repairing the jack.
- The use of unapproved parts may be dangerous and will invalidate your warranty.
- Do not use brake fluid or any fluid other than hydraulic jack fluid, as to do so may cause serious damage to the jack and will invalidate the warranty.
- Periodically check the pump piston and piston rod for signs of corrosion. Clean exposed areas with a clean oiled cloth.

### Storage:

When the jack is not in use, the ram and piston must be placed in their lowest positions to minimise corrosion.

### Lubrication:

Remove the handle to render the jack inoperable and store in a secure dry environment. Keep the jack clean and lubricate all moving parts with acid free oil on a regular basis.

### Checking Hydraulic Oil Level / Refilling Oil:

1. Fully lower the jack.
2. Remove the filler plug.
3. The correct oil level is indicated to the bottom of the filler opening.
4. We recommend that you should replace the hydraulic oil after every year of extensive use. Drain the oil through the filler plug opening.
5. Ensure that no dirt or debris is allowed to enter the jack or the fresh oil during this process.
6. To replace the oil fill as required.
7. Pump (the unloaded jack) 5 or 6 times to expel any excess air.
8. Pump jack to full height and pour off excess oil before refitting the filler plug.

**Note:** Ensure waste oil is disposed of in accordance with local authority regulations.

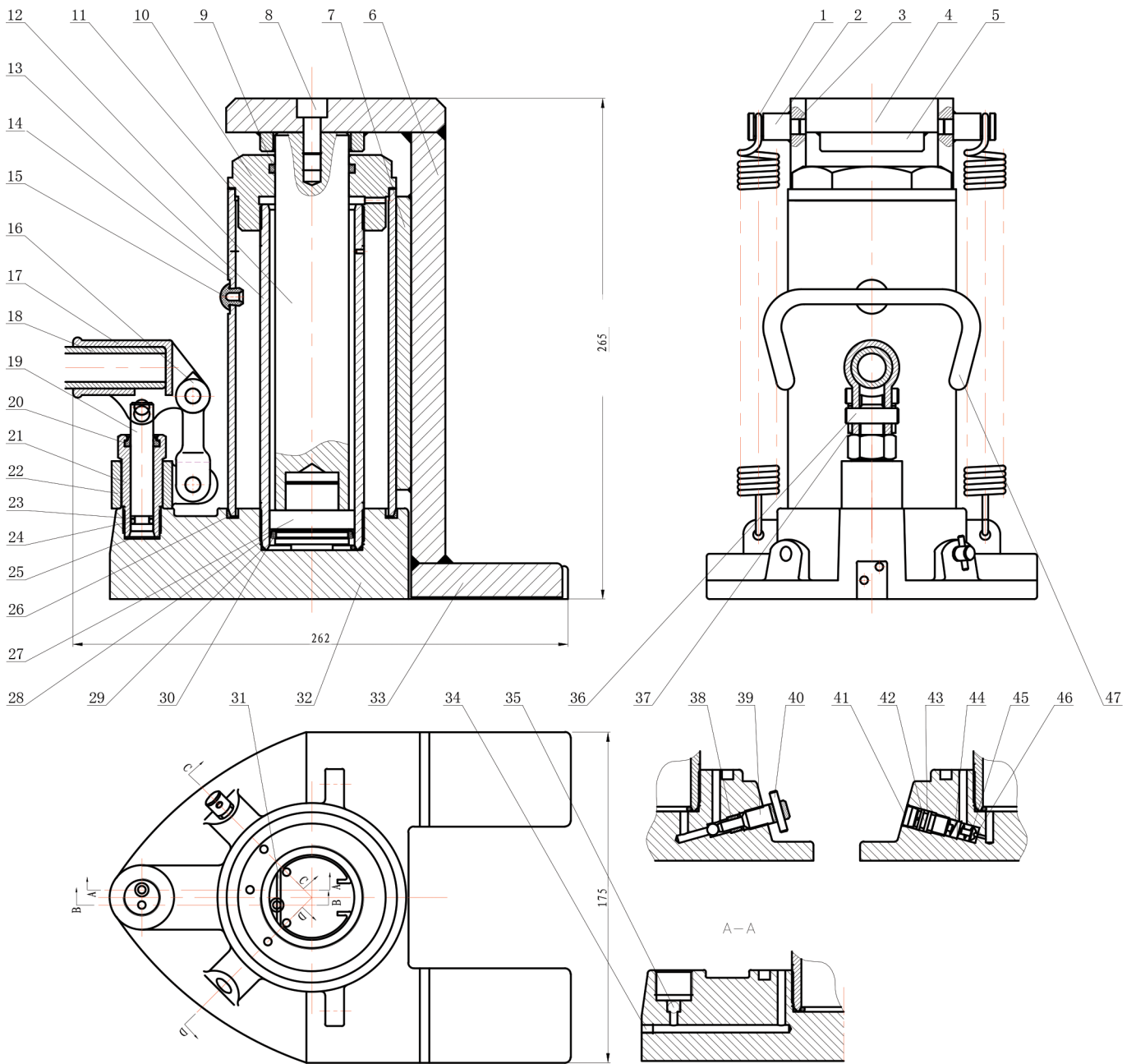
### De-commissioning:

Draw off the oil into an approved container and dispose of the jack and the oil according to local regulations.

## TROUBLESHOOTING

Problem	Possible Causes	Solution
<b>Jack will not lift the load</b>	<ol style="list-style-type: none"> <li>1. Jack has been overloaded</li> <li>2. Low oil level</li> <li>3. Release valve is open or only partially closed</li> <li>4. Excess air in the system</li> <li>5. Packing worn or defective</li> </ol>	<ol style="list-style-type: none"> <li>1. Check and confirm jack has rated capacity for the load and application (head &amp; toe capacity)</li> <li>2. Top up hydraulic oil level</li> <li>3. Check and close the release valve</li> <li>4. Open release valve and air valve (if fitted) and pump the handle a few times to purge the air. Close the release valve &amp; retry.</li> <li>5. Contact your nearest Tundra Industrial dealer for advice (Tel: <b>+44 (0) 1244 646 048</b>)</li> </ol>
<b>Jack will not lift high enough or feels "spongy"</b>	<ol style="list-style-type: none"> <li>1. Low oil level</li> <li>2. Worn or damaged seals</li> <li>3. Excess air in the system</li> <li>4. Release valve is open or only partially closed</li> </ol>	<ol style="list-style-type: none"> <li>1. Top up hydraulic oil level</li> <li>2. Contact your nearest Tundra Industrial dealer for advice (Tel: <b>+44 (0) 1244 646 048</b>)</li> <li>3. Open release valve and air valve (if fitted) and pump the handle a few times to purge the air. Close the release valve &amp; retry.</li> <li>4. Check and close the release valve</li> </ol>
<b>Jack lifts but will not hold the load</b>	<ol style="list-style-type: none"> <li>1. Release valve is open or only partially closed</li> <li>2. Excess air in the system</li> <li>2. Worn or damaged seals</li> </ol>	<ol style="list-style-type: none"> <li>1. Check and close the release valve</li> <li>2. Open release valve and air valve (if fitted) and pump the handle a few times to purge the air. Close the release valve &amp; retry.</li> <li>3. Contact your nearest Tundra Industrial dealer for advice (Tel: <b>+44 (0) 1244 646 048</b>)</li> </ol>
<b>Jack will not lower completely</b>	<ol style="list-style-type: none"> <li>1. Ram is damaged</li> <li>2. Excess air in the system</li> <li>3. Release valve is open or only partially closed</li> </ol>	<ol style="list-style-type: none"> <li>1. Contact your nearest Tundra Industrial dealer for advice (Tel: <b>+44 (0) 1244 646 048</b>)</li> <li>2. Open release valve and air valve (if fitted) and pump the handle a few times to purge the air. Close the release valve &amp; retry.</li> <li>3. Check and close the release valve</li> </ol>

**PARTS DIAGRAM**



## PARTS LIST

#	Description	Qty	#	Description	Qty
1.	Spring	2	25.	Gasket	1
2.	Spring Pin	2	26.	Trapezoid sealing ring	1
3.	Side Plate	2	27.	Piston	1
4.	Roof	1	28.	Bowl shaped pad	1
5.	Fix Ring	1	29.	Rubber L-2 2.2 x 49.5	1
6.	Vertical Plate	1	30.	Rubber L-2 35503750	1
7.	Guide Plate	1	31.	Steel ball retaining ring	1
8.	M10 X 20	1	32.	Pedestal	1
9.	Rubber L-1 #35503800	1	33.	Plate	1
10.	Top Cap	1	34.	Screw	2
11.	Rectangular Seal Ring	1	35.	GCr6 - 6.0000 G200	3
12.	Piston Rod	1	36.	Pin B8x28	3
13.	Cylinder	1	37.	Pin 2x12	3
14.	Cover	1	38.	Rectangular seal ring	1
15.	Oil Plug	1	39.	Oil return valve stem	1
16.	Connecting Rod	1	40.	Pin D4x22	1
17.	Handle Connector	1	41.	Safety valve cover	1
18.	Handle	1	42.	Safety valve stem	1
19.	Pump Core	1	43.	Rubber L-2 18000800	1
20.	J Shape Dustproof Ring	1	44.	Safety valve spring	1
21.	Pump Body	1	45.	Head	1
22.	Connector	1	46.	GCr6 - 2.2000 G200	1
23.	Retaining Ring	1	47.	Handle	1
24.	Rubber L-3 #26500710	1			

## EC DECLARATION OF CONFORMITY

We, Tundra Industrial, as the authorised European Community representative of the manufacturer, declare that the following equipment conforms to the requirements of the following Directives:

Directive:	Description:	Notified Body:
2006/42/EC (as amended)	Machinery Directive	Ente Certificazione Macchine Srl Via Ca' Bella, 243 – Loc. Castello di Serravalle – 40053 Valsamoggia (BO) - ITALY T +39 051 6705141

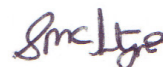
**Equipment Category:** Hydraulic Toe Jack

**Product Name/Model:**

- TUNJKTOE10-20 • 10/20 Tonne Hydraulic Toe Jack
- TUNJKTOE15-30 • 15/30 Tonne Hydraulic Toe Jack

**Signed by:**

Stephen McIntyre



**Position in the company:**

Operations Director

**Date:**

02 August 2018

**Name and address of manufacturer  
or authorised representative:**

Tundra Industrial, Herons Way, Chester Business Park,  
Chester,  
United Kingdom, CH4 9QR  
Telephone: +44 (0)1244 646 048  
Fax: +44 (0)1244 241 191





# USER MANUAL

TUNJKTOE10-20 • TUNJKTOE15-30

v.1.1

## LIMITED WARRANTY STATEMENT

Tundra Industrial warrants its customers that its products will be free of faults in workmanship or material. Tundra Industrial shall, upon suitable notification, correct any faults, by repair or replacement, of any parts or components of this product that are determined by Tundra Industrial to be faulty or defective. This warranty is void if the equipment has been subjected to improper installation, storage, alteration, abnormal operations, improper care, service or repair.

### Warranty Period

Tundra Industrial will assume both the parts and labour expense of correcting faults during the stated warranty periods below.

All warranty periods start from the date of purchase from an authorised Tundra Industrial dealer. If proof of purchase is unavailable from the end user, then the date of purchase will be deemed to be 3 months after the initial sale to the distributor.

#### 1 Years

- TUNJKTOE10-20 • 10/20 Tonne Hydraulic Toe Jack
- TUNJKTOE15-30 • 15/30 Tonne Hydraulic Toe Jack

#### 90 Days

- All replacement parts purchased **outside** of the warranty period

**Important: All parts used in the repair or replacement of warranty covered equipment will be subject to a minimum of 90 days cover or the remaining duration of the warranty period from the original date of purchase.**

### Warranty Registration / Activation

You can register and activate your warranty by visiting the Jefferson Tools website using the following address:

**[www.jeffersonstools.com/warranty](http://www.jeffersonstools.com/warranty)** and completing the online form. Online warranty registration is recommended as it eliminates the need to provide proof of purchase should a warranty claim be necessary.

### Warranty Repair

Should Tundra Industrial confirm the existence of any fault covered by this warranty the fault will be corrected by repair or replacement at an authorized Tundra Industrial dealer or repair centre.

### Packaging & Freight Costs

The customer is responsible for the packaging of the equipment and making it ready for collection. Tundra Industrial will arrange collection and transportation of any equipment returned under warranty. Upon inspection of the equipment, if no fault can be found or the equipment is not covered under the terms of the Tundra Industrial warranty, the customer will be liable for any labour and return transportation costs incurred.

These costs will be agreed with the customer before the machine is returned.

**Important: Tundra Industrial reserve the right to void any warranty for damages identified as being caused through misuse**

### Warranty Limitations

Tundra Industrial will not accept responsibility or liability for repairs made by unauthorised technicians or engineers. Tundra Industrial's liability under this warranty will not exceed the cost of correcting the fault of the Tundra Industrial products.

Tundra Industrial will not be liable for incidental or consequential damages (such as loss of business or hire of substitute equipment etc.) caused by the fault or the time involved to correct the fault. This written warranty is the only express warranty provided by Tundra Industrial with respect to its products. Any warranties of merchantability are limited to the duration of this limited warranty for the equipment involved.

Tundra Industrial is not responsible for cable wear due to flexing and abrasion. The end user is responsible for routine inspection of cables for possible wear and to correct any issues prior to cable failure.

## Claiming Warranty Coverage

The end user must contact Tundra Industrial (Tel: +44 (0) 1244 646 048) or their nearest authorised Tundra Industrial dealer where final determination of the warranty coverage can be ascertained.

### Step 1 - Reporting the Fault

#### Online Method:

- Visit our website [www.jeffersonstools.com/warranty](http://www.jeffersonstools.com/warranty) and complete the Warranty Returns form. You can complete the form online and submit it to us directly or download the form to print out and return by post.

#### Telephone Method:

Contact your Tundra Industrial dealer or sales representative with the following information:

- Model number
- Serial number (usually located on the specification plate)
- Date of purchase

A Warranty Returns form will be sent to you for completion and return by post or fax, together with details of your nearest authorised Tundra Industrial repair centre. On receipt of this form Tundra Industrial will arrange to collect the equipment from you at the earliest convenience.

### Step 2 - Returning the Equipment

It is the customer's responsibility to ensure that the equipment is appropriately and securely packaged for collection, **together with a copy of the original proof of purchase**. Please note that Tundra Industrial cannot assume any responsibility for any damage incurred to equipment during transit. Any claims against a third party courier will be dealt with under the terms & conditions of their road haulage association directives.

**Please note: Tundra Industrial will be unable to collect or process any warranty requests without a copy of the original proof of purchase.**

### Step 3 - Assessment and Repair

On receipt, the equipment will be assessed by an authorised Tundra Industrial engineer and it will be determined if the equipment is defective and in need of repair and any repairs needed are covered by the warranty policy. In order to qualify for warranty cover all equipment presented must have been used, serviced and maintained as instructed in the user manual.

Where repair is not covered by the warranty a quotation for repair, labour costs and return delivery will be sent to the customer (normally within 7 working days).

Note: If the repair quotation is not accepted Tundra Industrial Professional Tools & Equipment will invoice **1 hour labour time at £30 per hour plus return carriage costs (plus VAT)**.

In cases where no fault can be found with the equipment, or, if incorrect operation of the equipment is identified as the cause of the problem, a minimum of 1 hour labour at **£30 per hour plus carriage costs** will be required before the equipment will be despatched back to the customer.

Any equipment repaired or replaced under warranty will normally be ready for shipment back to the customer within 7 working days upon receipt of the equipment at an authorised Tundra Industrial Repair centre (subject to part availability). Where parts are not immediately available Tundra Industrial will contact you with a revised date for completion of the repair.

## General Warranty Enquiries

For any further information relating to Tundra Industrial warranty cover please call **+44 (0) 1244 646 048** or send your enquiry via email to **warranty@jeffersonstools.com**



