

# 10 TONNE BOTTLE JACK





***Disclaimer:***

The information in this document is to the best of our knowledge true and accurate, but all recommendations or suggestions are made without guarantee. Since the conditions of use are beyond their control, Tundra Industrial ® disclaim any liability for loss or damage suffered from the use of this data or suggestions. Tundra Industrial ® reserve the right to change product specifications and warranty statements without further notification. All images are for illustration purposes only.

## 1. SAFETY GUIDELINES

**1.1** Please read the following guidelines carefully before using this equipment. This equipment must be kept clean and kept in good working order in order to ensure safe and effective operation. Inspect the equipment carefully before use and do not use if any defects are identified. Contact your nearest Tundra Industrial Dealer for further information on repairs and replacement parts.

**1.2** The maximum load for this equipment is 10 Tonnes. Do not exceed this rated capacity.

**1.3** Centre the load on the saddle before lifting.

**1.4** This jack is a lifting device ONLY. Support the vehicle with appropriate means immediately after lifting.

**1.5** Do not go under the vehicle after lifting until it is supported correctly with axle stands.

**1.6** Do not move or dolly the vehicle after lifting until it is supported correctly with axle stands.

**1.7** Use jacks only on areas of the vehicle as specified by the vehicle manufacturer.

**1.8** Use this bottle jack for the purpose for which it is intended. **Do not** use it for any other purpose it is not designed to perform. Do not modify or attempt to enhance the equipment in any way.

**1.9** Keep children, unauthorized persons & animals away from the work area.

**1.10** Only use this jack on a hard surface that is stable, level, dry and not slippery, and capable of sustaining the load.

**1.11** Inspect the jack before each use. Do not use if bent, broken, cracked, leaking or otherwise damaged, any suspect parts are noted or it has been subjected to a shock load.

**1.12** Check to ensure that all applicable bolts and nuts are firmly tightened.

**1.13** Do not operate the jack when you are tired or under the influence of alcohol, drugs or any intoxicating medication.

**1.14** Do not allow untrained persons to operate the jack.

**1.15** Do not make any modifications to the jack.

**1.16** Do not use brake fluid or any other improper fluid and avoid mixing different types of oil when adding hydraulic oil. Only good quality hydraulic jack oil can be used.

**1.17** If the jack needs repairing and/or there is any part that needs to be replaced, have it repaired by authorized technicians and only use the replacement parts supplied by the manufacturer.



### **WARNING:**

No responsibility is accepted for incorrect use of this equipment. Incorrect use can result in damage to the equipment and danger to the user. Warranty will be void in the event of incorrect use. Hydraulic products are only repaired by Tundra Industrial authorised engineers. The warnings, cautions and instructions discussed in this instruction manual cannot cover all possible conditions and situations that may occur. It must be understood by the operator that common sense and caution are factors which cannot be built into this product, but must be supplied by the operator.

## 2. SPECIFICATIONS

Model Number	TUNJKBTL10L
Maximum Load:	10 Tonne
Minimum Height:	125mm
Maximum Height:	225mm
Weight (NW/GW):	7.7kg / 8kg

## 3. DESCRIPTION

This industrial bottle jack is manufactured from heavy-duty steel for strength and durability. Features include:

- Telescopic two-stage hydraulic ram allows for a higher maximum lift than a single stage jack, while maintaining the same compact closed heights.
- Manufactured from heavy-duty steel for strength and durability
- Low profile design for use on low-slung vehicles
- Machine-welded base for increased strength
- Double sealed oil reservoir for reduced risk of leakage
- Anti-rust, nickel-plated ram piston for smooth operation and long-life
- Carry-handle makes it easy to manoeuvre and transport
- Threaded pump assembly allows for easy maintenance
- Includes 4-section handle for variable leverage

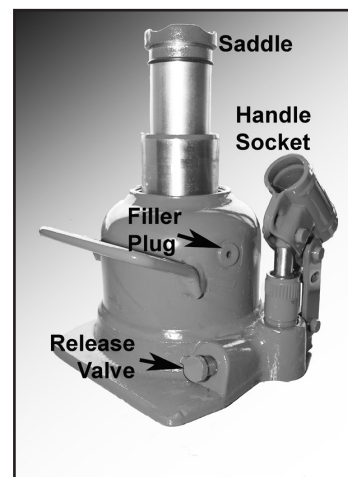
## 4. ASSEMBLY

Use the parts list and exploded drawing included on the next page as a reference to help you to assemble this equipment.

The following procedure is recommended:

Before using the jack, purge the hydraulic circuit, in order to eliminate any air from the system that may have accumulated during transit, as follows:

- Insert jack handle over release valve and turn anti-clockwise to open valve.
- Insert jack handle into the handle socket and pump several times to ensure full internal lubrication and to bleed air from the system.
- When complete place the handle back over the release valve and turn clockwise to close.

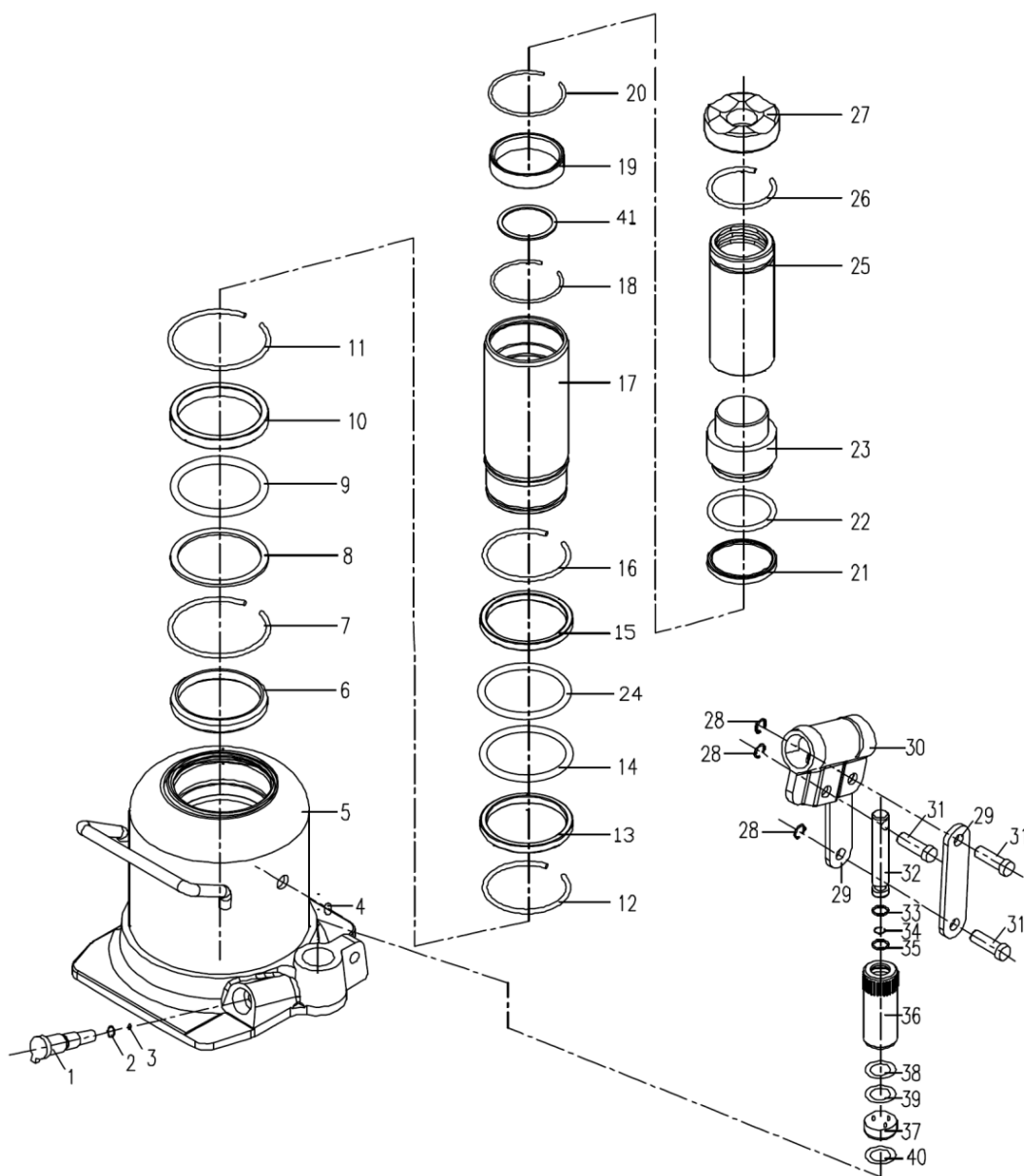


**WARNING! Ensure you prepare vehicle and use jack according to Section 1 SAFETY INSTRUCTIONS. Check that the supporting ground upon which the jack will stand is level and solid and not tarmacadam.**

- Position the jack saddle under the vehicle manufacturer's recommended lifting point ensuring the saddle is correctly centred beneath the load. Ensure jack is positioned to avoid having to operate it from under the vehicle, and that the handle is free to move up and down.
- Pump the handle up and down using full stroke range so that the saddle reaches the working height quickly.
- Should the jack become overloaded, a safety overload valve will open, and stop the vehicle from lifting.
- Position axle stands under the vehicle before attempting any work.
- Lowering the load.
- Ensure the axle stands are removed and that there are no persons or obstacles beneath the vehicle, or in the path of its descent.
- The lowering speed is controlled by the amount you turn release valve. Turn anti-clockwise and lower carefully, avoiding sudden release.

### 5. PARTS LIST & EXPLODED PARTS DIAGRAM (MAIN ASSEMBLY)

No.	Description
01	Release Valve
02	O-Ring (7.7x1.9mm)
03	Steel Ball
04	Oil Filler Plug
05	Base
06	Retaining Ring
07	Steel Ring
08	Steel Gasket
09	O-Ring
10	Ring Of Piston
11	Steel Ring (A)
12	Steel Ring
13	Piston Ring
14	O-Ring
15	Upper Piston Ring
16	Steel Ring
17	Piston
18	Steel Ring
19	Retaining Ring
20	Steel Ring
21	Y-Ring
22	Seal Ring
23	Piston
24	Nylon Washer
25	Piston Rod
26	Steel Ring
27	Top Nut
28	C-Ring
29	Linking Rod
30	Handle Socket
31	Axle Pin
32	Pump Core
33	Dustproof Ring
34	Retaining Ring
35	O-Ring
36	Pump Cylinder
37	Safety Valve



No.	Description
38	Retaining Ring
39	Nylon Washer

No.	Description
40	Nylon Washer
41	Guide Bushing

## 6. OPERATING INSTRUCTIONS

**WARNING!** Ensure that you read, understand and apply the safety instructions and warnings before use.

### Lifting

- Turn the handle/release valve clockwise to the closed position. Do not over tighten.
- Position the jack under the specified lift point.
- Begin lifting by pumping the handle up and down.
- Immediately after lifting, support the vehicle with appropriately rated axle stands.
- Turn the handle/release valve slowly counterclockwise to lower the vehicle onto axle stands.

### Lowering

- Turn the handle/release valve clockwise to the closed position. Do not over tighten.
- Pump the handle up and down to lift vehicle off axle stands.
- Remove the axle stands. Do not get under or let anyone get under the vehicle while lowering.
- Turn the handle/release valve slowly counterclockwise to lower the vehicle onto the ground.

## 7. TROUBLESHOOTING

Symptom	Possible Causes	Solution
Jack will not lift the load	<ol style="list-style-type: none"> <li>1. Release valve not tightly closed</li> <li>2. Low oil level</li> <li>3. Defective or worn internal parts</li> <li>4. Load exceeds maximum allowance</li> </ol>	<ol style="list-style-type: none"> <li>1. Tighten release valve</li> <li>2. Check and add oil. Follow "Check and Refill Oil" instructions on facing page</li> <li>3. Discontinue use and contact a local repair centre</li> <li>4. Use a higher capacity jack</li> </ol>
Jack will not hold the load	<ol style="list-style-type: none"> <li>1. Release valve not tightly closed</li> <li>2. Power unit malfunction</li> </ol>	<ol style="list-style-type: none"> <li>1. Tighten release valve</li> <li>2. Discontinue use and contact a local repair centre</li> </ol>
Jack will not descend to minimum height, or will not remain in lowered position	<ol style="list-style-type: none"> <li>1. Air trapped in system</li> <li>2. Reservoir oil overfilled</li> </ol>	<ol style="list-style-type: none"> <li>1. Vent air out of system. Follow "Air Venting Procedures" on facing page</li> <li>2. Check and ensure proper oil level. Follow "Check and Refill Oil" instructions on facing page</li> </ol>
Jack will not lift to maximum height	<ol style="list-style-type: none"> <li>1. Low oil level</li> </ol>	<ol style="list-style-type: none"> <li>1. Check and ensure proper oil level. Follow "Check and Refill Oil" instructions on facing page</li> </ol>
Jack will not function properly after trying solutions listed above	<ol style="list-style-type: none"> <li>1. Internal malfunction or structural damage</li> </ol>	<ol style="list-style-type: none"> <li>1. Stop usage and contact an authorised repair centre</li> </ol>



# USER MANUAL

## TUNJKBTL10L

## 8. MAINTENANCE

NOTICE: Use high grade hydraulic oil only. Never use brake fluid, motor oil, transmission fluid, turbine oil or any other fluids. ISO-VG22 or equivalent hydraulic oil is recommended.

### Check and Refill Oil

- With the jack fully lowered and in a level location, if unit cover is provided, remove unit cover, then remove oil filler plug.
- The oil should just cover the inner cylinder as seen from the oil filler plug hole.
- Do not overfill. Always fill with new, clean hydraulic jack oil as recommended above.
- Replace oil filler plug, then replace unit cover.

### Lubrication and Cleaning

- Periodically clean and lubricate all moving parts and pivot points.

### Air Venting Procedures

- With the jack fully lowered and the release valve open, remove the oil filler plug.
- Pump the handle rapidly several times. Replace the oil filler plug.
- Turn the handle/release valve clockwise to the closed position.
- Pump the handle until the lift arm reaches maximum height. Continue to pump several times to remove trapped air in the system.
- Turn the handle/release valve counterclockwise one full turn and lower the lift arm to the lowest position.  
Use force on saddle if necessary.
- Carefully and slowly loosen oil filler plug to release pressurized air.
- Repeat above steps until trapped air is completely vented.

### Damaged Equipment

- Any jack that appears to be damaged in any way, is found to be worn, or operates abnormally **SHOULD BE REMOVED FROM SERVICE UNTIL REPAIRED**. It is recommended that necessary repairs be made by a manufacturer's or supplier's authorized repair facility if repairs are permitted by the manufacturer or supplier.

### Alterations

- Because of potential hazards associated with this type of equipment, no alterations shall be made to the product.

### Attachments and Adapters

- Only attachments and/or adapters supplied by the manufacturer shall be used.

## EC DECLARATION OF CONFORMITY

We, Tundra Industrial, as the authorised European Community representative of the manufacturer, declare that the following equipment conforms to the requirements of the following Directives:

**BS EN 1494:2000+A1:2008**

Mobile or movable jacks and associated lifting equipment

**2006/42/EC (as amended)**

Machinery Directive

**Equipment Category:** Bottle Jack / Lifting Equipment  
**Product Name/Model:** TUNJKBTL10L - 10 Tonne Bottle Jack  
**Maximum Load:** 10 Tonne

**Signed by:** Stephen McIntyre  
**Position in the company:** Operations Director  
**Date:** 21 March 2017  
**This technical document is held by:** Jimmy Hemphill



Technical file holder's address as shown below

### Name and address of manufacturer or authorised representative:

Tundra Industrial,  
Herons Way,  
Chester Business Park,  
Chester,  
United Kingdom,  
CH4 9QR

Telephone: **+44 (0)1244 646 048**  
Fax: **+44 (0)1244 241 1**





# USER MANUAL

## TUNJKBTL10L

## LIMITED WARRANTY STATEMENT

Tundra Industrial warrants its customers that its products will be free of defects in workmanship or material.

Tundra Industrial shall, upon suitable notification, correct any defects, by repair or replacement, of any parts or components of this product that are determined by Tundra Industrial to be faulty or defective.

This warranty is void if the equipment has been subjected to improper installation, storage, alteration, abnormal operations, improper care, unauthorised service or repair.

### Warranty Period

Tundra Industrial will assume both the parts and labour expense of correcting defects during the stated warranty periods below. All warranty periods start from the date of purchase from an authorised Tundra Industrial dealer. If proof of purchase is not available from the end user, then the date of purchase will be deemed to be 3 months after the initial sale to the distributor.

#### 1 Year

- Tundra Industrial 10 Tonne Bottle Jack - [TUNJKBTL10L]

#### 90 Days

- All replacement parts purchased outside of the warranty period

**Important:** All parts used in the repair or replacement of warranty covered equipment will be subject to a minimum of 90 days cover or the remaining duration of the warranty period from the original date of purchase.

### Warranty Registration / Activation

You can register and activate your warranty by visiting the Jefferson Tools website using the following address: [www.jeffersontools.com/warranty](http://www.jeffersontools.com/warranty) and completing the online form. Online warranty registration is recommended as it eliminates the need to provide proof of purchase should a warranty claim be necessary.

### Warranty Repair

Should Tundra Industrial confirm the existence of any defect covered by this warranty the defect will be corrected by repair or replacement at an authorized Tundra Industrial dealer or repair centre.

### Packaging & Freight Costs

The customer is responsible for the packaging of the equipment and making it ready for collection. Tundra Industrial will arrange collection and transportation of any equipment returned under warranty. Upon inspection of the equipment, if no defect can be found or the equipment is not covered under the terms of the Tundra Industrial warranty, the customer will be liable for any labour and return transportation costs incurred. These costs will be agreed with the customer before the equipment is returned.

### Warranty Limitations

Tundra Industrial will not accept responsibility or liability for repairs made by unauthorised technicians or engineers. Tundra Industrial's liability under this warranty will not exceed the cost of correcting the defect of the Tundra Industrial products. Tundra Industrial will not be liable for incidental or consequential damages (such as loss of business or hire of substitute equipment etc..) caused by the defect or the time involved to correct the defect. This written warranty is the only express warranty provided by Tundra Industrial with respect to its products.

Any warranties of merchantability are limited to the duration of this limited warranty for the equipment involved. Tundra Industrial is not responsible for cable wear due to flexing and abrasion. The end user is responsible for routine inspection of cables for possible wear and to correct any issues prior to cable failure.



# USER MANUAL

## TUNJKBTL10L

### Claiming Warranty Coverage

The end user must contact Tundra Industrial (Tel: **+44 (0) 1244 646 048**) or their nearest authorised Tundra Industrial dealer where final determination of the warranty coverage can be ascertained.

#### Step 1 - Reporting the Defect

Online Method:

- Visit the website [www.jeffersonstools.com/warranty](http://www.jeffersonstools.com/warranty) and complete the Warranty Returns form. You can complete the form online and submit it to us directly or download the form to print out and return by post.

Telephone Method:

Contact your Tundra Industrial dealer or sales representative with the following information:

- Model number
- Serial number (usually located on the specification plate)
- Date of purchase

A Warranty Returns form will be sent to you for completion and return by post or fax, together with details of your nearest authorised Tundra Industrial repair centre. On receipt of this form Tundra Industrial will arrange to collect the equipment from you at the earliest convenience.

#### Step 2 - Returning the Equipment

It is the customer's responsibility to ensure that the equipment is appropriately and securely packaged for collection. Please ensure that you include a copy of your proof of purchase. Please note that Tundra Industrial cannot assume any responsibility for any damage incurred to equipment during transit. Any claims against a third party courier will be dealt with under the terms & conditions of their road haulage association directives.

#### Step 3 - Assessment and Repair

On receipt, the equipment will be assessed by an authorised Tundra Industrial engineer and it will be determined if the equipment is defective and in need of repair and any repairs needed are covered by the warranty policy. In order to qualify for warranty cover all equipment presented must have been used, serviced and maintained as instructed in the user manual.

Where repair is not covered by the warranty a quotation for repair, labour costs and return delivery will be sent to the customer (normally within 7 working days). **Note:** If the repair quotation is not accepted Tundra Industrial will invoice 1 hour labour time at £30 per hour plus return carriage costs (plus VAT).

In cases where no fault can be found with the equipment, or, if incorrect operation of the equipment is identified as the cause of the problem, a minimum of 1 hour labour at £30 per hour plus carriage costs will be required before the equipment will be despatched back to the customer.

Any equipment repaired or replaced under warranty will normally be ready for shipment back to the customer within 7 working days upon receipt of the equipment at an authorised Tundra Industrial Repair centre (subject to part availability). Where parts are not immediately available Tundra Industrial will contact you with a revised date for completion of the repair.

#### General Warranty Enquiries

For any further information relating to Tundra Industrial warranty cover please call **+44 (0) 1244 646 048**.



