

2 TONNE FOLDING ENGINE CRANE





Disclaimer:

The information in this document is to the best of our knowledge true and accurate, but all recommendations or suggestions are made without guarantee. Since the conditions of use are beyond their control, Tundra Industrial ® disclaim any liability for loss or damage suffered from the use of this data or suggestions. Tundra Industrial ® reserve the right to change product specifications and warranty statements without further notification. All images are for illustration purposes only.

1. SAFETY GUIDELINES

IMPORTANT: Read all the instructions before use, and follow all instructions and safety instructions in order to avoid personal injury and damage to property.

- Do not overload – risk of personal injury and/or damage to property.
- Only use the product on horizontal, flat surfaces, as it can otherwise tip over and cause personal injury and/or damage to property.
- Always lock legs and arms before lifting.
- Screw connections on the product may only be replaced with others of a corresponding quality.
- Prior to each use, check that all screw connections are properly tightened.
- Never exceed the maximum permitted load according to the markings on the arm.
- Failure to follow all the instructions and safety instructions entails a risk of personal injury and/or death.
- Do not overload the product. Always observe the permitted maximum load in each given arm position.
- Only use the product on horizontal, flat surfaces that can bear the weight of the crane and the load, as there is otherwise a risk of personal injury and/or damage to property.
- The arm and load must be in the lowest possible position during transport. Move the load slowly and evenly in order to avoid the load starting to swing.
- Never walk or stand beneath a suspended load.



WARNING:

No responsibility is accepted for incorrect use of this equipment. Incorrect use can result in damage to the equipment and danger to the user. Warranty will be void in the event of incorrect use. The warnings, cautions and instructions discussed in this instruction manual cannot cover all possible conditions and situations that may occur. It must be understood by the operator that common sense and caution are factors which cannot be built into this product, but must be supplied by the operator.

2. DESCRIPTION

- Heavy-duty steel construction ensures lasting performance and durability
- 4-hole position boom and heavy-duty ram help provide reliable & safe lifting
- Six heavy-duty swivel castors for smooth rolling mobility on garage floors
- Foldable design allows for easy storage
- Supplied with chain and hook

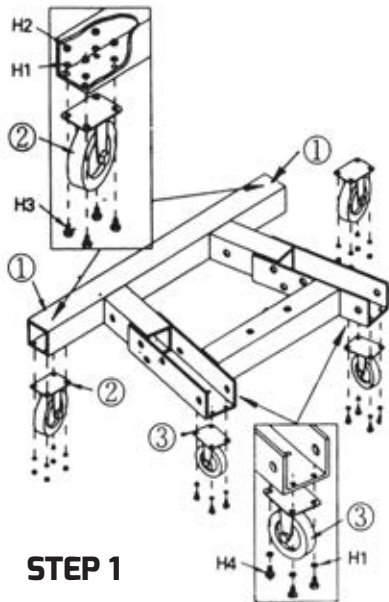
3. SPECIFICATIONS

| | | | | |
|--------------------------------------|------|------|------|------|
| Rated load (kg): | 500 | 1000 | 1500 | 2000 |
| Length of boom arm (mm): | 1670 | 1530 | 1390 | 1250 |
| Stroke in max. rated load (mm): | | 1660 | | |
| Min. height in max. rated load (mm): | | 300 | | |
| Net weight (kg): | | 99.0 | | |

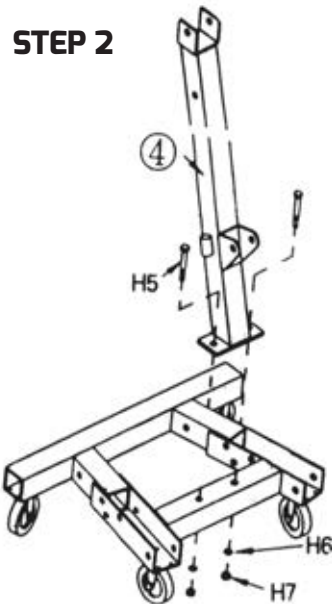
4. ASSEMBLY (MAIN FRAME)

| REF | DESCRIPTION | Q'TY |
|-----|------------------|------|
| H1 | SPRING WASHER 8 | 24 |
| H2 | NUT M8 | 16 |
| H3 | BOLT M8×20 | 16 |
| H4 | BOLT M8×12 | 8 |
| H5 | BOLT M14×95 | 2 |
| H6 | WASHER 14 | 3 |
| H7 | NUT M14 | 3 |
| H8 | SPRING WASHER 16 | 2 |
| H9 | NUT M16 | 6 |
| H10 | BOLT M16×100 | 1 |
| H11 | BOLT M16×115 | 2 |
| H12 | BOLT M18×125 | 2 |
| H13 | SPRING WASHER 18 | 2 |
| H14 | NUT M18 | 3 |
| H15 | PIN 18×110 | 2 |
| H16 | SPLIT PIN | 2 |
| H17 | BOLT M16×90 | 2 |
| H18 | WASHER 16 | 4 |
| H19 | BOLT M18×110 | 1 |
| H20 | WASHER 18 | 1 |
| H21 | BOLT M16×75 | 1 |
| H22 | BOLT M14×75 | 1 |

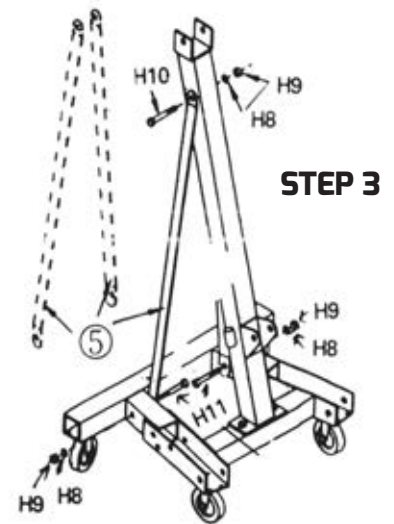
| REF | Q'TY | DESCRIPTION |
|-----|------|--------------|
| 1 | 1 | BASE |
| 2 | 4 | LARGE CASTER |
| 3 | 2 | SMALL CASTER |
| 4 | 1 | POST |
| 5 | 2 | SUPPORT |
| 6 | 2 | LEG |
| 7 | 1 | JACK |
| 8 | 1 | BOOM |
| 9 | 1 | EXTENSION |
| 10 | 1 | JACK HANDLE |
| 11 | 1 | CHAIN/HOOK |



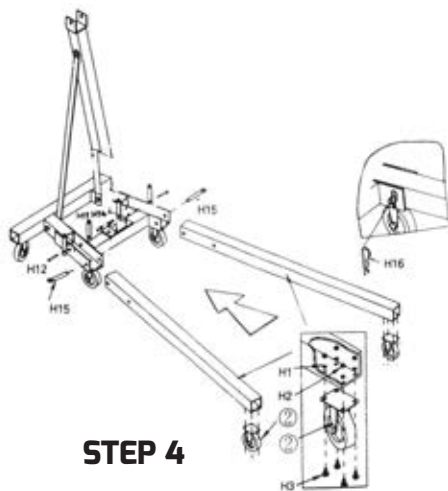
STEP 1



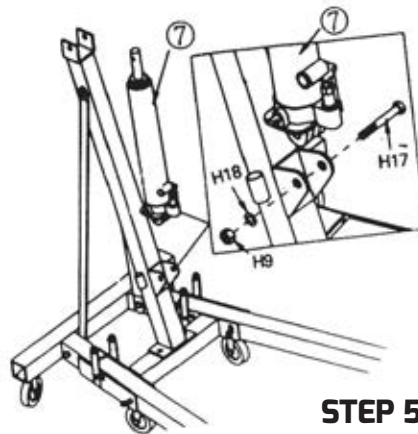
STEP 2



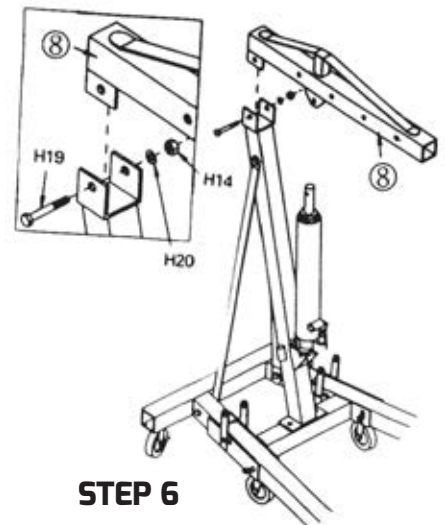
STEP 3



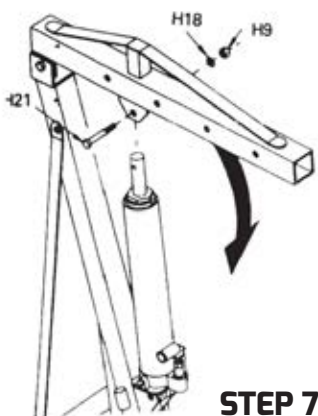
STEP 4



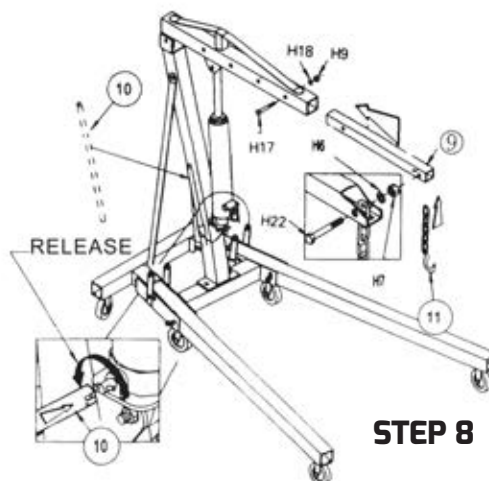
STEP 5



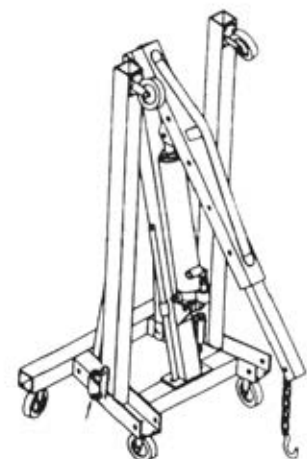
STEP 6



STEP 7

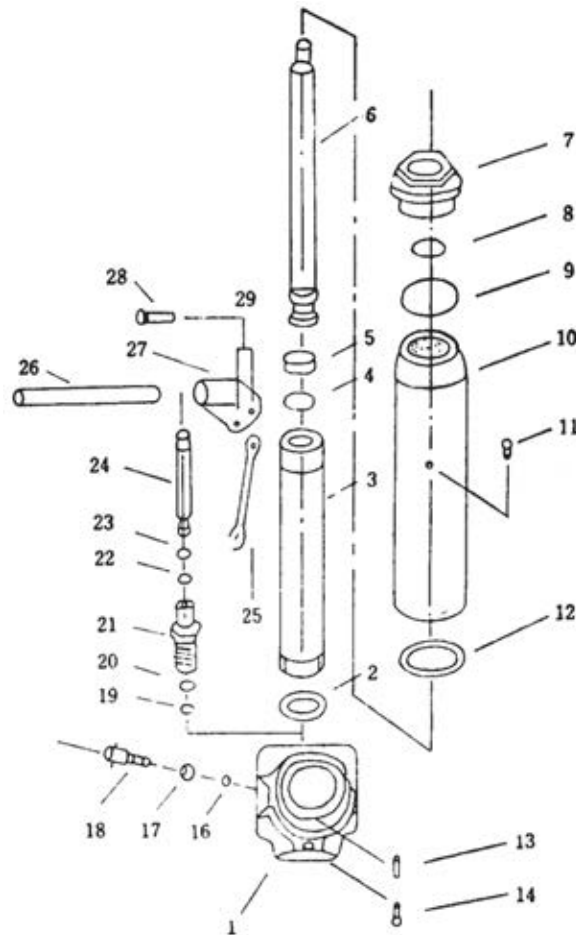


STEP 8



5. ASSEMBLY (RAM)

| | | |
|----|-----------------|---|
| 1 | Valve Block | 1 |
| 2 | Copper Washer | 1 |
| 3 | Cylinder | 1 |
| 4 | O-Ring | 1 |
| 5 | O-Ring Retainer | 1 |
| 6 | Ram | 1 |
| 7 | Top Nut | 1 |
| 8 | O-Ring | 1 |
| 9 | Sealing Gasket | 1 |
| 10 | Oil Tank | 1 |
| 11 | Oil Plug | 1 |
| 12 | Seal Ring | 1 |
| 13 | Tube | 1 |
| 14 | Bolt | 1 |
| 15 | Screw | 2 |
| 16 | Ball | 1 |
| 17 | Seal Ring | 1 |
| 18 | Release spindle | 1 |
| 19 | Ball | 1 |
| 20 | Copper Washer | 1 |
| 21 | Pump Cylinder | 1 |
| 22 | O-Ring | 1 |
| 23 | Back up Ring | 1 |
| 24 | Plunger | 1 |
| 25 | Pump Link | 1 |
| 26 | Handle | 1 |
| 27 | Handle Socket | 1 |
| 28 | Shaft | 2 |
| 29 | Cotter Pin | 2 |



6. OPERATION

WARNING:

- The workshop crane is only intended for lifting, not for bearing loads.
- Never overload the product.

IMPORTANT: Air in the hydraulic system can impair performance. If necessary, bleed the system by opening the relief valve fully. This is done by turning the handle clockwise as illustrated, pressing the arm down and pumping rapidly several times with the pump handle.

Lifting

- Close the relief valve by turning the handle clockwise until it resists. Do not overtighten.

Lowering

- Open the relief valve by turning the handle anti-clockwise very slowly. You can regulate the lowering speed by turning the handle.

7. MAINTENANCE

IMPORTANT:

- Never mix different oil grades. Never use any other fluid, as this can destroy the product.
- Take care when filling to ensure that no compounds enter the system. Check the cylinder and piston for corrosion every three months. Clean when necessary and rub with an oiled cloth.
- The arm should always be in the lowest position when the product is not in use.

8. TROUBLESHOOTING

| Problem | Probable cause | Action |
|---|--|---|
| <ul style="list-style-type: none"> • The load drops. | <ul style="list-style-type: none"> • Contaminated valve seats. | <ul style="list-style-type: none"> • Lower the arm. Close the relief valve and remove the oil filler plug. • Place one foot on the leg and lift the arm by hand to the highest position. • Open the relief valve to lower the arm. • Replace any worn seals |
| <ul style="list-style-type: none"> • The load cannot be lifted. • The load cannot be lifted to maximum height. • The pump unit feels unstable under load. • The pump unit does not go back fully. | <ul style="list-style-type: none"> • Air in the system. | <ul style="list-style-type: none"> • Open the relief valve and remove the oil filler plug. • Pump the handle a few times and close the relief valve. |
| <ul style="list-style-type: none"> • The load cannot be lifted to maximum height. • The pump unit feels unstable under load. | <ul style="list-style-type: none"> • Oil level too high or too low. | <ul style="list-style-type: none"> • Check the oil level. Remove the oil filler plug. • Adjust to the correct oil level. |
| <ul style="list-style-type: none"> • The pump unit feels unstable under load. | <ul style="list-style-type: none"> • Worn pump seal. | <ul style="list-style-type: none"> • Replace the pump seal. |
| <ul style="list-style-type: none"> • The pump unit does not go back fully. | <ul style="list-style-type: none"> • Air in the system. • The unit needs to be lubricated. | <ul style="list-style-type: none"> • Bleed the hydraulic pump by removing the filler plug. • Lubricate external moving parts. |


EC DECLARATION OF CONFORMITY

We, Tundra Industrial, as the authorised European Community representative of the manufacturer, declare that the following equipment conforms to the requirements of the following Directives:

2006/42/EC (as amended)
Machinery Directive

Equipment Category: Engine Crane
Product Name/Model: TUNENGCRA2.OF - 2 Tonne Engine Crane

| | | | | |
|--------------------------------------|------|------|------|------|
| Rated load (kg): | 500 | 1000 | 1500 | 2000 |
| Length of boom arm (mm): | 1670 | 1530 | 1390 | 1250 |
| Stroke in max. rated load (mm): | | 1660 | | |
| Min. height in max. rated load (mm): | | 300 | | |
| Net weight (kg): | | 99.0 | | |

Signed by: Stephen McIntyre 
Position in the company: Operations Director
Date: 30 March 2017
This technical document is held by: Jimmy Hemphill

Technical file holder's address as shown below

Name and address of manufacturer or authorised representative:

Tundra Industrial,
Herons Way,
Chester Business Park,
Chester,
United Kingdom,
CH4 9QR

Telephone: +44 (0)1244 646 048
Fax: +44 (0)1244 241 1



LIMITED WARRANTY STATEMENT

Tundra Industrial warrants its customers that its products will be free of defects in workmanship or material.

Tundra Industrial shall, upon suitable notification, correct any defects, by repair or replacement, of any parts or components of this product that are determined by Tundra Industrial to be faulty or defective.

This warranty is void if the equipment has been subjected to improper installation, storage, alteration, abnormal operations, improper care, unauthorised service or repair.

Warranty Period

Tundra Industrial will assume both the parts and labour expense of correcting defects during the stated warranty periods below. All warranty periods start from the date of purchase from an authorised Tundra Industrial dealer. If proof of purchase is not available from the end user, then the date of purchase will be deemed to be 3 months after the initial sale to the distributor.

1 Year

- Tundra Industrial 2 TONNE FOLDING ENGINE CRANE [TUNENGCR2.OF]

90 Days

- All replacement parts purchased outside of the warranty period

Important: All parts used in the repair or replacement of warranty covered equipment will be subject to a minimum of 90 days cover or the remaining duration of the warranty period from the original date of purchase.

Warranty Registration / Activation

You can register and activate your warranty by visiting the Jefferson Tools website using the following address: www.jeffersonstools.com/warranty and completing the online form. Online warranty registration is recommended as it eliminates the need to provide proof of purchase should a warranty claim be necessary.

Warranty Repair

Should Tundra Industrial confirm the existence of any defect covered by this warranty the defect will be corrected by repair or replacement at an authorized Tundra Industrial dealer or repair centre.

Packaging & Freight Costs

The customer is responsible for the packaging of the equipment and making it ready for collection. Tundra Industrial will arrange collection and transportation of any equipment returned under warranty. Upon inspection of the equipment, if no defect can be found or the equipment is not covered under the terms of the Tundra Industrial warranty, the customer will be liable for any labour and return transportation costs incurred. These costs will be agreed with the customer before the equipment is returned.

Warranty Limitations

Tundra Industrial will not accept responsibility or liability for repairs made by unauthorised technicians or engineers. Tundra Industrial's liability under this warranty will not exceed the cost of correcting the defect of the Tundra Industrial products. Tundra Industrial will not be liable for incidental or consequential damages (such as loss of business or hire of substitute equipment etc..) caused by the defect or the time involved to correct the defect. This written warranty is the only express warranty provided by Tundra Industrial with respect to its products.

Any warranties of merchantability are limited to the duration of this limited warranty for the equipment involved. Tundra Industrial is not responsible for cable wear due to flexing and abrasion. The end user is responsible for routine inspection of cables for possible wear and to correct any issues prior to cable failure.

Claiming Warranty Coverage

The end user must contact Tundra Industrial (Tel: **+44 (0) 1244 646 048**) or their nearest authorised Tundra Industrial dealer where final determination of the warranty coverage can be ascertained.

Step 1 - Reporting the Defect

Online Method:

- Visit the website www.jeffersonstools.com/warranty and complete the Warranty Returns form. You can complete the form online and submit it to us directly or download the form to print out and return by post.

Telephone Method:

Contact your Tundra Industrial dealer or sales representative with the following information:

- Model number
- Serial number (usually located on the specification plate)
- Date of purchase

A Warranty Returns form will be sent to you for completion and return by post or fax, together with details of your nearest authorised Tundra Industrial repair centre. On receipt of this form Tundra Industrial will arrange to collect the equipment from you at the earliest convenience.

Step 2 - Returning the Equipment

It is the customer's responsibility to ensure that the equipment is appropriately and securely packaged for collection. Please ensure that you include a copy of your proof of purchase. Please note that Tundra Industrial cannot assume any responsibility for any damage incurred to equipment during transit. Any claims against a third party courier will be dealt with under the terms & conditions of their road haulage association directives.

Step 3 - Assessment and Repair

On receipt, the equipment will be assessed by an authorised Tundra Industrial engineer and it will be determined if the equipment is defective and in need of repair and any repairs needed are covered by the warranty policy. In order to qualify for warranty cover all equipment presented must have been used, serviced and maintained as instructed in the user manual.

Where repair is not covered by the warranty a quotation for repair, labour costs and return delivery will be sent to the customer (normally within 7 working days). **Note:** If the repair quotation is not accepted Tundra Industrial will invoice 1 hour labour time at £30 per hour plus return carriage costs (plus VAT).

In cases where no fault can be found with the equipment, or, if incorrect operation of the equipment is identified as the cause of the problem, a minimum of 1 hour labour at £30 per hour plus carriage costs will be required before the equipment will be despatched back to the customer.

Any equipment repaired or replaced under warranty will normally be ready for shipment back to the customer within 7 working days upon receipt of the equipment at an authorised Tundra Industrial Repair centre (subject to part availability). Where parts are not immediately available Tundra Industrial will contact you with a revised date for completion of the repair.

General Warranty Enquiries

For any further information relating to Tundra Industrial warranty cover please call **+44 (0) 1244 646 048**.

