

# WET & DRY VACUUM

60L  
2000W

**230V** | **50HZ**  
THERMAL PROTECTION



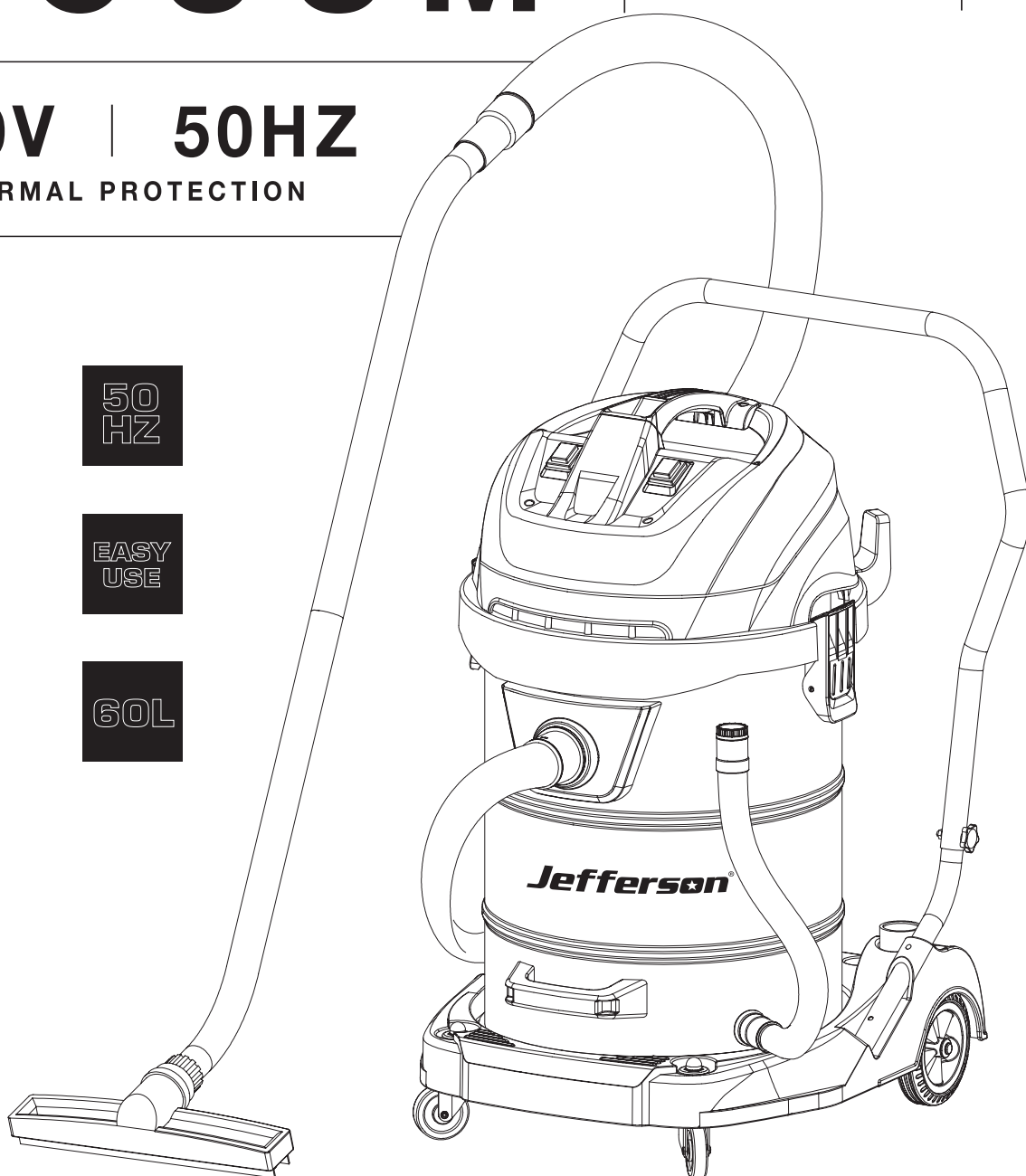
50  
HZ



EASY  
USE



60L



Contents	
General Safety	4
Specifications	6
Standard Accessories	6
Operation	6
Assembly	8
Limited Warranty Statement	10
EC Declaration of Conformity	14

## 1 | General Safety

*This equipment should only be operated by qualified and responsible individuals who have read and understood the information and guidelines described in this document. In particular, the following safety instructions should be followed to reduce the risk of injury to the operator and members of the public.*

1. Familiarise yourself with this equipment and its operation before use - **read this user manual carefully before use.** Save for future reference.
2. Ensure that all bystanders are kept at a safe distance and that animals and children are kept from the work area.
3. Never use this equipment if any part or accessory is damaged or malfunctioning.
4. Always shut the equipment off completely when not in use, if left unattended or for cleaning & maintenance.
5. Ensure that the power supply is compatible with the voltage and frequency stated on the specification plate on the equipment. Be sure to carry out a risk assessment before carrying out any work with this equipment. Follow all relevant health and safety guidelines and ensure electrical safety procedures are implemented before use.
6. Only Jefferson approved engineers should carry out repairs and maintenance on this equipment. Only use Jefferson-approved replacement parts to repair this equipment. Never modify the equipment in anyway. Ensure that the equipment is kept in good working order and cleaned and serviced regularly. Regularly check external nuts and fixings to ensure that they have not loosened from vibration during use.
7. Store in a clean dry environment.

### Electrical Safety

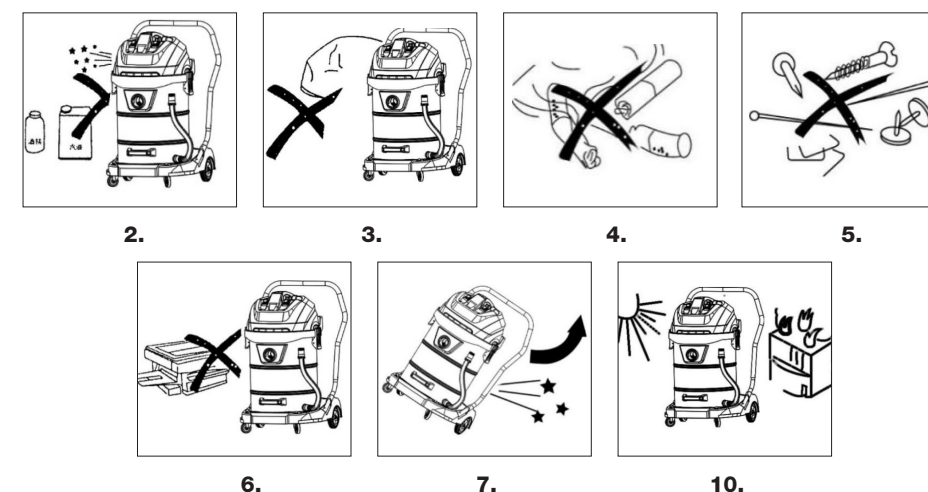
In order to avoid accidents and injuries from electric shocks:

- Ensure that the mains cable is not damaged by being pulled over sharp edges, by jamming, or by pulling on the cable.
- Before each use, check the power supply lead and the extension cable for damage and ageing. Do not use the equipment if the cable is damaged or worn. Danger of electric shock hazard.
- If the power cable damaged, it must be replaced by a Jefferson approved engineer or similarly qualified person.
- Switch the machine off and disconnect the mains plug:
  - when the machine is not in use,
  - before the machine is opened up,
  - for all maintenance and cleaning work,
  - if the connecting cable is damaged or tangled up.
- Do not use the cable to pull the plug out of the socket. Protect the cable from heat, oil, and sharp edges.
- Make sure that the mains voltage corresponds with the information on the rating plate.
- The device must only be connected to a mains socket via a residual-current circuit breaker (RCD). injury.to.people.can.be.avoided:
- Ensure that the machine is correctly assembled and the filters are in the correct position for the application before use.



### Safety Instructions:

1. Check before operation that the local power supply is the same as the specification on the rating label.
2. Do not use the machine in combustible and explosive places in case the motor spark causes fire.
3. Do not jam the air inlet mouth, in case temperature rises and damages the motor.
4. Do not collect combustible and explosive objects such as glowing cigarettes, gasoline, etc.
5. Do not collect sharp objects.
6. Do not collect objects which can easily attach on the filter such as calcareousness powder, gesso and graphite powder. Because those will block the ventilation and damage the motor.
7. Do not overturn the machine in case water goes into the motor and damages the motor.
8. Warning: If water outflows from air outlet mouth, do not overturn the machine when it is being repaired in case water goes into the motor and causes damages. Do not use this machine as pump in case damaging the motor.
9. Turn off the machine and remove the plug each time after using or when being repaired.
10. Keep the machine away from strong sunlight and high temperature places in case its plastic is distorted.
11. Do not wrest, tramp or haul hose in case of making it damaged.
12. Do not immerse the barrel cap into the water or wash with water in case water goes into the electrophorus parts and causing persons injured. The correct way should be: immerse the dishcloth firstly, then dry it. Finally, wipe the dirty part gently.
13. The power cord must be replaced by the designated repairing center or professionals.



## 2 | Specification



Rated Voltage	230V
Frequency	50Hz
Rated Input Power	2000W
Capacity	60L
Insulation	IPX4
Air Flow Rate	2X3.2M3/Min
Tank Diameter	410mm
Vacuum Suction	22Kpa

## 3 | Standard Accessories



Metal Telescopic Tube



Floor Brush & Wiper Brush



Needle Punching Cotton Filter



Round Brush & Crevice Nozzel



Suction hose

**Important:** After unpacking, inspect the equipment carefully and ensure that the product is in perfect condition without any defects or no damaged or worn parts. Please dispose of all the packaging materials appropriately, recycling all materials where facilities are available.

## 4 | Operation

### Application:

The appliance is intended for wet and dry vacuuming in industrial and domestic environments. This is equipment is not suitable for vacuuming flammable or explosive materials or those which might endanger health.

The manufacturer cannot be held responsible for injuries resulting from use which does not comply with the directions, or from incorrect use.

### Before Use:

1. Make sure that the power supply is compatible with the equipment
2. Assemble the suction hose and connect to the tank connector on the vacuum cleaner
3. Connect the suction hose

### Dry Vacuum Instructions:

1. Ensure that the dust bag is installed before use.
2. Empty any existing dust from the tank before cleaning.
3. Do not attempt to vacuum any liquids when equipment is set up for dry vacuuming.

### Wet Vacuum Instructions:

1. Remove the dust filter before using the equipment to vacuum liquids.
2. Ensure that a suitable anti-foaming agent is added to the tank to prevent foam build up and damage to the motor

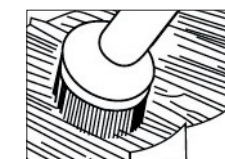
### Cleaning and Maintenance:

1. Clean the tank after use to prevent dirt accumulating inside
2. Clean the dust bags with warm water after use and dry for future use
3. Replace the dust bag every 1-2 years or as required

### Choose suitable accessories for different occasions.



Wet floor nozzle for floor carpet ets.



Bristle for window, table etc.



Crevice nozzle for crevice, corner etc.

### Protection Device

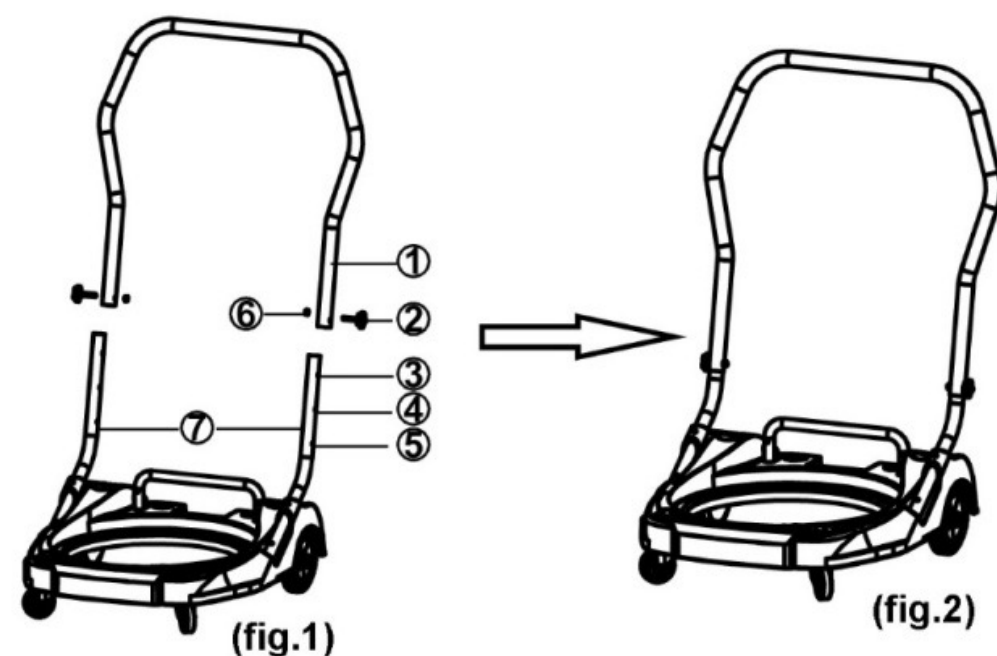
Special instruction concerning protective device

1. When the water in the barrel is full, the device begin to work. The suction power with vanish at this moment. The machine will make a noise which indicates the motor is running at a high speed. Under this circumstance, you should cut off the electricity. Clean out the water. Then equip the machine and turn it on, it will begin to work normally.
2. Only connect to a proper 220-240 volt.50Hz socket.
3. If the supply cord is damaged, it must be replaced by the manufacturer or its service agent to a similarly qualified person in order to avoid a hazard.
4. This appliance is not intended for use by persons(including children)with reduced physical, sensory or mental capabilities, or lack of experience and knowledge, unless they have been given responsible for their safety.
5. Children should be supervised to ensure that do not play with the appliance.

## 5 | Assembly

### Machine assembly

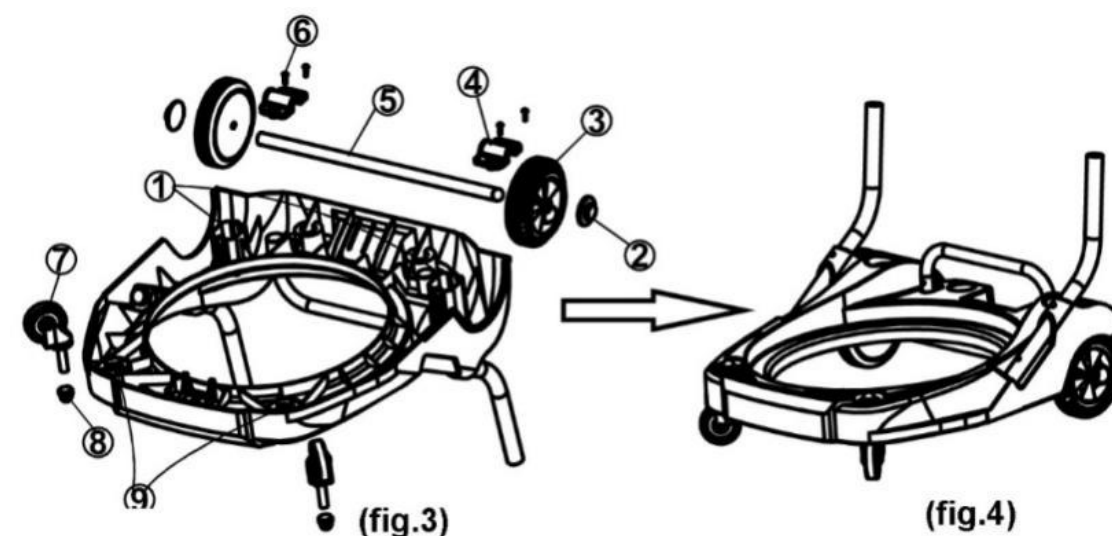
1. Put the 1 (handrail upper pipe, 1 pc) into the 7 (handrail under pipe, 2pcs)
2. There are 3 rows of positioning holes (3,4,5) in 7 (handrail under pipe, 2pcs), which is used to adjust the suitable height. Please adjusted the 1 handrail upper pipe, 1 pc) to the proper height position of the positioning hole, then use the 2 (handrail screw, 2ps) and 6 (nuts, 2pcs) to fix 1 and 7.
3. When use the turnover function to clean the dust in the tank, please adjust the (handrail upper pipe, 1 pc) to the positioning hole 5.( pic 1 and pic 2)



## Assembly

### Wheel assembly

1. Put 3 ( 2pcs) into 5, then fixed 2 (2pcs) with 5, put them in position 1. Then use the screw to fix the 4 (2pcs) and 6 (4pcs),
2. Fix the 7 (2pcs) and 8 (2pcs) into the corresponding position 9 tightly. (pic 4 and pic 5)





## 5 | Limited Warranty Statement

Jefferson Professional Tools & Equipment, or hereafter "Jefferson" warrants its customers that its products will be free of defects in workmanship or material. Jefferson shall, upon suitable notification, correct any defects, by repair or replacement, of any parts or components of this product that are determined by Jefferson to be faulty or defective.

This warranty is void if the equipment has been subjected to improper installation, storage, alteration, abnormal operations, improper care, unauthorised service or repair.

### Warranty Period

Jefferson will assume both the parts and labour expense of correcting defects during the stated warranty periods below.

All warranty periods start from the date of purchase from an authorised Jefferson dealer. If proof of purchase is unavailable from the end user, then the date of purchase will be deemed to be 3 months after the initial sale to the distributor.

#### 1 Year

- All Jefferson Wet & Dry Vacuum Cleaners

#### 90 Days

- All replacement parts purchased outside of the warranty period

**Important:** All parts used in the repair or replacement of warranty covered equipment will be subject to a minimum of 90 days cover or the remaining duration of the warranty period from the original date of purchase.

### Warranty Registration / Activation

You can register and activate your warranty by visiting the Jefferson Tools website using the following address: [www.jeffersontools.com/warranty](http://www.jeffersontools.com/warranty) and completing the online form. Online warranty registration is recommended as it eliminates the need to provide proof of purchase should a warranty claim be necessary.

### Warranty Repair

Should Jefferson confirm the existence of any defect covered by this warranty the defect will be corrected by repair or replacement at an authorized Jefferson dealer or repair centre.

### Packaging & Freight Costs

The customer is responsible for the packaging of the equipment and making it ready for collection. Jefferson will arrange collection and transportation of any equipment returned under warranty. Upon inspection of the equipment, if no defect can be found or the equipment is not covered under the terms of the Jefferson warranty, the customer will be liable for any labour and return transportation costs incurred.

These costs will be agreed with the customer before the machine is returned.

\* Jefferson reserve the right to void any warranty for damages identified as being caused through misuse.

### Warranty Limitations

Jefferson will not accept responsibility or liability for repairs made by unauthorised technicians or engineers. Jefferson's liability under this warranty will not exceed the cost of correcting the defect of the Jefferson products.

Jefferson will not be liable for incidental or consequential damages (such as loss of business or hire of substitute equipment etc.) caused by the defect or the time involved to correct the defect. This written warranty is the only express warranty provided by Jefferson with respect to its products.

Any warranties of merchantability are limited to the duration of this limited warranty for the equipment involved.

Jefferson is not responsible for cable wear due to flexing and abrasion. The end user is responsible for routine inspection of cables for possible wear and to correct any issues prior to cable failure.

### Claiming Warranty Coverage

The end user must contact Jefferson Professional Tools & Equipment (**Tel:** +44 (0) 1244 646 048) or their nearest authorised Jefferson dealer where final determination of the warranty coverage can be ascertained.

### Step 1 - Reporting the Defect

#### Online Method:

- Visit our website [www.jeffersontools.com/warranty](http://www.jeffersontools.com/warranty) and complete the Warranty Returns form. You can complete the form online and submit it to us directly or download the form to print out and return by post.

#### Telephone Method:

Contact your Jefferson dealer or sales representative with the following information:

- Model number
- Serial number (usually located on the specification plate)
- Date of purchase

A Warranty Returns form will be sent to you for completion and return by post or fax, together with details of your nearest authorised Jefferson repair centre. On receipt of this form Jefferson will arrange to collect the equipment from you at the earliest convenience.

### Step 2 - Returning the Equipment

It is the customer's responsibility to ensure that the equipment is appropriately and securely packaged for collection. Please ensure that you include a copy of your proof of purchase. Please note that Jefferson cannot assume any responsibility for any damage incurred to equipment during transit. Any claims against a third party courier will be dealt with under the terms & conditions of their road haulage association directives.

### Step 3 - Assessment and Repair

On receipt, the equipment will be assessed by an authorised Jefferson engineer and it will be determined if the equipment is defective and in need of repair and any repairs needed are covered by the warranty policy. In order to qualify for warranty cover all equipment presented must have been used, serviced and maintained as instructed in the user manual.

Where repair is not covered by the warranty a quotation for repair, labour costs and return delivery will be sent to the customer (normally within 7 working days).

**Note:** If the repair quotation is not accepted Jefferson Professional Tools & Equipment will invoice 1 hour labour time at £30 per hour plus return carriage costs (plus VAT).

*In cases where no fault can be found with the equipment, or, if incorrect operation of the equipment is identified as the cause of the problem, a minimum of 1 hour labour at £30 per hour plus carriage costs will be required before the equipment will be despatched back to the customer.*

*Any equipment repaired or replaced under warranty will normally be ready for shipment back to the customer within 7 working days upon receipt of the equipment at an authorised Jefferson Repair centre (subject to part availability). Where parts are not immediately available Jefferson will contact you with a revised date for completion of the repair.*



### General Warranty Enquiries

For any further information relating to Jefferson warranty cover please call **+44 (0) 1244 646 048** or send your enquiry via email to **warranty@jeffersonstools.com**.

**Jefferson**<sup>®</sup>  
PROFESSIONAL TOOLS & EQUIPMENT

### Parts & Servicing

For Jefferson approved replacement parts contact your nearest dealer or contact Jefferson tools

Telephone: +44 (0)1244 646 048

Fax: +44 (0)1244 241 191

Email: warranty@jeffersonstools.com

### Disclaimer:

*The information in this document is to the best of our knowledge true and accurate, but all recommendations or suggestions are made without guarantee. Since the conditions of use are beyond their control, Jefferson Tools® disclaim any liability for loss or damage suffered from the use of this data or suggestions. Furthermore, no liability is accepted if use of any product in accordance with this data or suggestions infringes any patent. Jefferson Tools® reserve the right to change product specifications and warranty statements without further notification. All images are for illustration purposes only.*

## EC Declaration of Conformity

We, Jefferson Professional Tools & Equipment, as the authorised European Community representative of the manufacturer, declare that the following equipment conforms to the requirements of the following Directives:

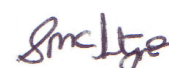
2004/108/EC (as amended) **Electromagnetic Compatibility (EMC)**

2006/95/EC (as amended) **Low Voltage Directive**

**Equipment Category:** Wet and Dry Vacuum Cleaner

**A copy of this certificate has been submitted to the European Commission and to the EU Member State, United Kingdom**

**Signed by:** Stephen McIntyre  
**Position in the company:** Operations Director  
**Date:** 3rd December 2015



**This technical document is held by:** Marketing Department

*Technical file holder's address as shown below*

**Name and address of manufacturer or authorised representative:**

Jefferson Tools, 24 Lisgorgan Lane, Upperlands, BT46 5TE,  
**Telephone:** +44 (0)1244 646 048 (ROI) +353 (0)1473 0300 **Email:** enquiries@jeffersonstools.com  
**www.jeffersonstools.com**



This mark indicates that this product should not be disposed with other household wastes throughout the EU. To prevent possible harm to the environment or human health from uncontrolled waste disposal, recycle it responsibly to promote the sustainable reuse of material. To return your used device, please use the return and collection systems or contact the retailer where you purchase this machine, so the product can be recycled.



The packaging materials used with this equipment can be used again.  
Please recycle if possible in your local area.



### **IMPORTANT! SAFETY FIRST!**

Before attempting to use this product please read all the safety precautions and operating instructions outlined in this manual to reduce the risk of fire, electric shock or personal injury.

Jefferson Tools, 24 Lisgorgan Lane, Upperlands, BT46 5TE,  
**Telephone:** +44 (0)1244 646 048 (ROI) +353 (0)1473 0300 **Email:** [enquiries@jeffersonstools.com](mailto:enquiries@jeffersonstools.com)  
**[www.jeffersonstools.com](http://www.jeffersonstools.com)**