

# Jefferson®



## **90L**

### **INDUSTRIAL** **Wet & Dry Vacuum Cleaner**

JEFVACWD090-230 • JEFVACWD090-110

## **User Manual**

v.1.1





**Contents:**

General Safety	<b>4</b>
Specifications	<b>5</b>
Standard Accessories	<b>5</b>
Parts Identification	<b>6</b>
Operation	<b>7</b>
<hr/>	
Limited Warranty Statement	<b>8</b>
EC Declaration of Conformity	<b>11</b>
<hr/>	
<hr/>	
<hr/>	
<hr/>	
<hr/>	
<hr/>	
<hr/>	
<hr/>	
<hr/>	
<hr/>	
<hr/>	

**Important:** This manual is an essential part of this Jefferson product and should be kept safe with the product for future reference. This manual outlines the purpose for which the product has been designed and contains important information to ensure its correct and safe use. It is essential that you read and understand the information in this manual before operating this equipment.

## 1. General Safety

*This equipment should only be operated by qualified and responsible individuals who have read and understood the information and guidelines described in this document. In particular, the following safety instructions should be followed to reduce the risk of injury to the operator and members of the public.*

1. Familiarise yourself with this equipment and its operation before use - **read this user manual carefully before use**. Save for future reference.
2. Ensure that all bystanders are kept at a safe distance and that animals and children are kept from the work area.
3. Never use this equipment if any part or accessory is damaged or malfunctioning.
4. Always shut the equipment off completely when not in use, if left unattended or for cleaning & maintenance.
5. Ensure that the power supply is compatible with the voltage and frequency stated on the specification plate on the equipment. Be sure to carry out a risk assessment before carrying out any work with this equipment. Follow all relevant health and safety guidelines and ensure electrical safety procedures are implemented before use.
6. Only Jefferson approved engineers should carry out repairs and maintenance on this equipment. Only use Jefferson-approved replacement parts to repair this equipment. Never modify the equipment in anyway. Ensure that the equipment is kept in good working order and cleaned and serviced regularly. Regularly check external nuts and fixings to ensure that they have not loosened from vibration during use.
7. Store in a clean dry environment.

### Electrical Safety

In order to avoid accidents and injuries from electric shocks:

- Ensure that the mains cable is not damaged by being pulled over sharp edges, by jamming, or by pulling on the cable.
- Before each use, check the power supply lead and the extension cable for damage and ageing. Do not use the equipment if the cable is damaged or worn. Danger of electric shock hazard.
- If the power cable damaged, it must be replaced by a Jefferson approved engineer or similarly qualified person.
- Switch the machine off and disconnect the mains plug:
  - when the machine is not in use,
  - before the machine is opened up,
  - for all maintenance and cleaning work,
  - if the connecting cable is damaged or tangled up.
- Do not use the cable to pull the plug out of the socket. Protect the cable from heat, oil, and sharp edges.
- Make sure that the mains voltage corresponds with the information on the rating plate.
- The device must only be connected to a mains socket via a residual-current circuit breaker (RCD).  
injury.to.people.can.be.avoided:
- Ensure that the machine is correctly assembled and the filters are in the correct position for the application before use.

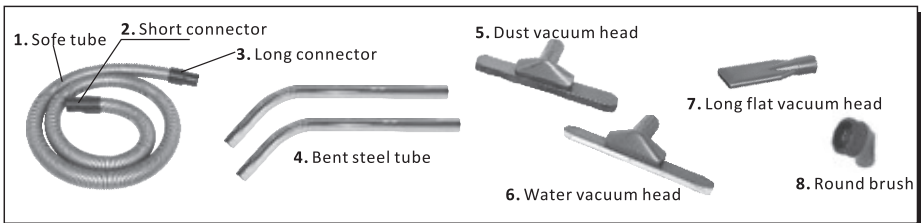


## 2. Specifications



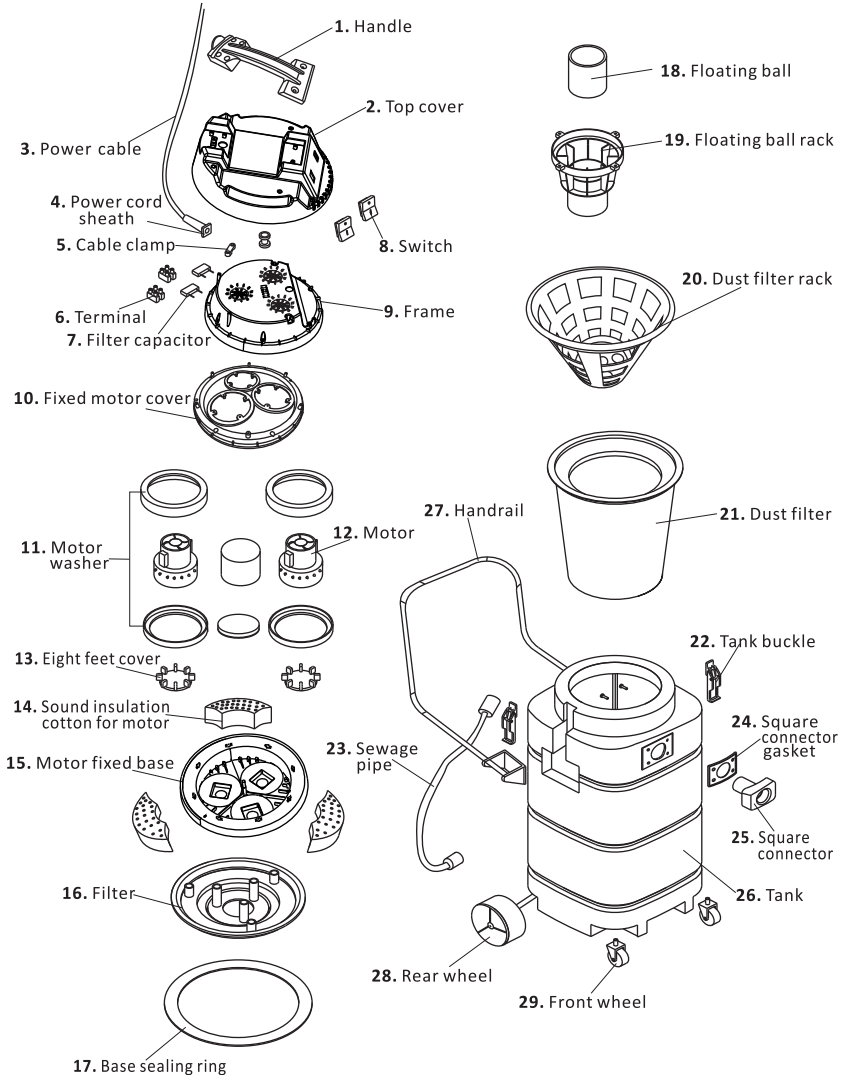
TANK CAPACITY	90L
POWER	2000W
VOLTAGE	110V / 230V (50Hz)
HEIGHT	92CM
TANK DIAMETER	44CM
AIR FLOW RATE	120L/S
VACUUM SUCTION	250mbar
CABLE LENGTH	8m
HOSE DIAMETER	40MM
INSULATION CLASS	IPX4

## 3. Standard Accessories



**Important:** After unpacking, inspect the equipment carefully and ensure that the product is in perfect condition without any defects or no damaged or worn parts. Please dispose of all the packaging materials appropriately, recycling all materials where facilities are available.

## 4. Parts Identification



## **5. Operation**

### **Application:**

The appliance is intended for wet and dry vacuuming in industrial and domestic environments. This is equipment is not suitable for vacuuming flammable or explosive materials or those which might endanger health.

The manufacturer cannot be held responsible for injuries resulting from use which does not comply with the directions, or from incorrect use.

### **Before Use:**

1. Make sure that the power supply is compatible with the equipment
2. Assemble the suction hose and connect to the tank connector on the vacuum cleaner
3. Connect the suction hose

### **Dry Vacuum Instructions:**

1. Ensure that the dust bag is installed before use.
2. Empty any existing dust from the tank before cleaning.
3. Do not attempt to vacuum any liquids when equipment is set up for dry vacuuming.

### **Wet Vacuum Instructions:**

1. Remove the dust filter before using the equipment to vacuum liquids.
2. Ensure that a suitable anti-foaming agent is added to the tank to prevent foam build up and damage to the motor

### **Cleaning and Maintenance:**

1. Clean the tank after use to prevent dirt accumulating inside
2. Clean the dust bags with warm water after use and dry for future use
3. Replace the dust bag every 1-2 years or as required

## Limited Warranty Statement

Jefferson Professional Tools & Equipment, or hereafter "Jefferson" warrants its customers that its products will be free of defects in workmanship or material. Jefferson shall, upon suitable notification, correct any defects, by repair or replacement, of any parts or components of this product that are determined by Jefferson to be faulty or defective.

This warranty is void if the equipment has been subjected to improper installation, storage, alteration, abnormal operations, improper care, unauthorised service or repair.

### Warranty Period

Jefferson will assume both the parts and labour expense of correcting defects during the stated warranty periods below.

All warranty periods start from the date of purchase from an authorised Jefferson dealer. If proof of purchase is unavailable from the end user, then the date of purchase will be deemed to be 3 months after the initial sale to the distributor.

#### 1 Year

- All Jefferson Wet & Dry Vacuum Cleaners

#### 90 Days

- All replacement parts purchased outside of the warranty period

**Important:** All parts used in the repair or replacement of warranty covered equipment will be subject to a minimum of 90 days cover or the remaining duration of the warranty period from the original date of purchase.

### Warranty Registration / Activation

You can register and activate your warranty by visiting the Jefferson Tools website using the following address: [www.jeffersonstools.com/warranty](http://www.jeffersonstools.com/warranty) and completing the online form. Online warranty registration is recommended as it eliminates the need to provide proof of purchase should a warranty claim be necessary.

### Warranty Repair

Should Jefferson confirm the existence of any defect covered by this warranty the defect will be corrected by repair or replacement at an authorized Jefferson dealer or repair centre.

### Packaging & Freight Costs

The customer is responsible for the packaging of the equipment and making it ready for collection. Jefferson will arrange collection and transportation of any equipment returned under warranty. Upon inspection of the equipment, if no defect can be found or the equipment is not covered under the terms of the Jefferson warranty, the customer will be liable for any labour and return transportation costs incurred.

These costs will be agreed with the customer before the machine is returned.

\* Jefferson reserve the right to void any warranty for damages identified as being caused through misuse



## Warranty Limitations

Jefferson will not accept responsibility or liability for repairs made by unauthorised technicians or engineers. Jefferson's liability under this warranty will not exceed the cost of correcting the defect of the Jefferson products.

Jefferson will not be liable for incidental or consequential damages (such as loss of business or hire of substitute equipment etc.) caused by the defect or the time involved to correct the defect. This written warranty is the only express warranty provided by Jefferson with respect to its products.

Any warranties of merchantability are limited to the duration of this limited warranty for the equipment involved.

Jefferson is not responsible for cable wear due to flexing and abrasion. The end user is responsible for routine inspection of cables for possible wear and to correct any issues prior to cable failure.

## Claiming Warranty Coverage

The end user must contact Jefferson Professional Tools & Equipment (Tel: +44 (0) 1244 646 048) or their nearest authorised Jefferson dealer where final determination of the warranty coverage can be ascertained.

### Step 1 - Reporting the Defect

#### *Online Method:*

- Visit our website [www.jeffersontools.com/warranty](http://www.jeffersontools.com/warranty) and complete the Warranty Returns form. You can complete the form online and submit it to us directly or download the form to print out and return by post.

#### *Telephone Method:*

Contact your Jefferson dealer or sales representative with the following information:

- Model number
- Serial number (usually located on the specification plate)
- Date of purchase

A Warranty Returns form will be sent to you for completion and return by post or fax, together with details of your nearest authorised Jefferson repair centre. On receipt of this form Jefferson will arrange to collect the equipment from you at the earliest convenience.

### Step 2 - Returning the Equipment

It is the customer's responsibility to ensure that the equipment is appropriately and securely packaged for collection. Please ensure that you include a copy of your proof of purchase. Please note that Jefferson cannot assume any responsibility for any damage incurred to equipment during transit. Any claims against a third party courier will be dealt with under the terms & conditions of their road haulage association directives.

### Step 3 - Assessment and Repair

On receipt, the equipment will be assessed by an authorised Jefferson engineer and it will be determined if the equipment is defective and in need of repair and any repairs needed are covered by the warranty policy. In order to qualify for warranty cover all equipment presented must have been used, serviced and maintained as instructed in the user manual.

Where repair is not covered by the warranty a quotation for repair, labour costs and return delivery will be sent to the customer (normally within 7 working days).

**Note:** *If the repair quotation is not accepted Jefferson Professional Tools & Equipment will invoice 1 hour labour time at £30 per hour plus return carriage costs (plus VAT).*

*In cases where no fault can be found with the equipment, or, if incorrect operation of the equipment is identified as the cause of the problem, a minimum of 1 hour labour at £30 per hour plus carriage costs will be required before the equipment will be despatched back to the customer.*

*Any equipment repaired or replaced under warranty will normally be ready for shipment back to the customer within 7 working days upon receipt of the equipment at an authorised Jefferson Repair centre (subject to part availability). Where parts are not immediately available Jefferson will contact you with a revised date for completion of the repair.*

## General Warranty Enquiries

For any further information relating to Jefferson warranty cover please call **+44 (0) 1244 646 048** or send your enquiry via email to **warranty@jeffersonstools.com**.

# Jefferson®

## Parts & Servicing

For Jefferson approved replacement parts contact your nearest dealer or contact Jefferson tools

**Telephone:** +44 (0)1244 646 048

**Fax:** +44 (0)1244 241 191

**Email:** warranty@jeffersonstools.com

### **Disclaimer:**

*The information in this document is to the best of our knowledge true and accurate, but all recommendations or suggestions are made without guarantee. Since the conditions of use are beyond their control, Jefferson Tools® disclaim any liability for loss or damage suffered from the use of this data or suggestions. Furthermore, no liability is accepted if use of any product in accordance with this data or suggestions infringes any patent. Jefferson Tools® reserve the right to change product specifications and warranty statements without further notification. All images are for illustration purposes only.*

# EC Declaration of Conformity

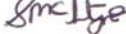
We, Jefferson Professional Tools & Equipment, as the authorised European Community representative of the manufacturer, declare that the following equipment conforms to the requirements of the following Directives:

2004/108/EC (as amended) **Electromagnetic Compatibility (EMC)**

2006/95/EC (as amended) **Low Voltage Directive**

**Equipment Category:** Wet and Dry Vacuum Cleaner

**A copy of this certificate has been submitted to the European Commission and to the EU Member State, United Kingdom**

**Signed by:** Stephen McIntyre   
**Position in the company:** Operations Director  
**Date:** 3rd December 2015

**This technical document is held by:** Jimmy Hemphill

*Technical file holder's address as shown below*

**Name and address of manufacturer or authorised representative:**

## **IMPORTANT! SAFETY FIRST!**

Before attempting to use this product please read all the safety precautions and operating instructions outlined in this manual to reduce the risk of fire, electric shock or personal injury.

Jefferson Tools, Herons Way, Chester Business Park, Chester, United Kingdom, CH4 9QR

**Tel.** +44 (0)1244 646 048

**Email:** [sales@jeffersonstools.com](mailto:sales@jeffersonstools.com)

**[www.jeffersonstools.com](http://www.jeffersonstools.com)**