

UNIVERSAL POWER COUPLING GREASE GUN



JEFUNIPCPGR

User Manual
v.1.1



CONTENTS

Contents	2
About This Document	2
Introduction	3
Specifications	3
Equipment Identification	3
Power Tool Compatibility	4
Safety Guidelines	5
Before First Use	6
Grease Loading	7
Operation	8
Maintenance	8
Troubleshooting	8
Parts List & Diagram	9
Limited Warranty Statement	10

ABOUT THIS DOCUMENT

This manual has been compiled by Jefferson Tools and is an integrated part of the product with which it's enclosed and should be kept with it for future reference. Please read all of the information supplied in this User Manual before operating this product.

This manual describes the purpose for which the product has been designed and contains all the necessary information to ensure its correct and safe use. We recommend that you read the information supplied before carrying out any maintenance or repair. By following all the general safety instructions contained in this manual you will help to ensure operator safety and extend the potential life span of the equipment.

All photographs and drawings in this manual are supplied by Jefferson Tools to help illustrate the operation of the product. Whilst every effort has been made to ensure accuracy of information contained in this manual our policy of continuous improvement determines the right to make modifications without prior warning.

The information contained in this Instruction Manual is designed to assist you in the safe operation and maintenance of the equipment. Some illustrations in this Instruction Manual may show details or attachments that differ from those on your own model. Contact your nearest Jefferson Dealer if you are unsure about any information included in this manual or require any additional information about the safe use, operation maintenance, or repair of this equipment.

ENVIRONMENTAL PROTECTION



**PLEASE
RECYCLE**

Recycle any packaging and unwanted materials instead of disposing of them as waste. All tools, accessories and packaging should be sorted, taken to a recycling centre and disposed of in a manner which is compatible with the environment. When the product becomes completely unserviceable, reaches the end of its working life and requires disposal, drain off any fluids (if applicable) into approved containers and dispose of the product and the fluids according to local regulations.

INTRODUCTION

- An all-purpose grease gun coupler compatible with both electric (12V ~ 18V) and pneumatic tools.
- Working pressure is derived from the electric or air powered tool.
- Fully automatic, cycles continuous lubricating grease flow to the power tool during operation.
- Heavy duty aluminium construction supporting high working pressures between 4000-8000 psi.
- Equipped with high pressure relief safety valve for user protection and durability.
- 3-way loading: 14 oz. cartridge / bulk / dispenser.

SPECIFICATIONS

Grease capacity:	14 oz. cartridge / bulk / dispenser
Rated working pressure:	4000psi • 275bar • 27.5Mpa
Maximum pressure:	8000psi • 552bar • 55.2Mpa
Pressure relief valve:	Yes (>8000psi • >552bar • >55.2Mpa)
Power tool coupling holder capacity:	1.5" - 3"
AC power tool compatibility	110 - 230V
DC power tool compatibility	12V - 18V

EQUIPMENT IDENTIFICATION

1. 18" High Pressure Nylon Hose
2. Grease Gun Outlet
3. Filler Plug
4. Pressure Vent Protector
4b. Gun Head
5. Container Housing
6. Container Cap
7. Plunger Handle / Assembly
8. Stopper
9. Coupling Holder
10. Butterfly Locking Screw
11. (Example) Power Tool
12. Power Tool Connector
13. Gear Housing
14. Gear Cap
15. Nylon Hose Output
16. High Pressure Valve

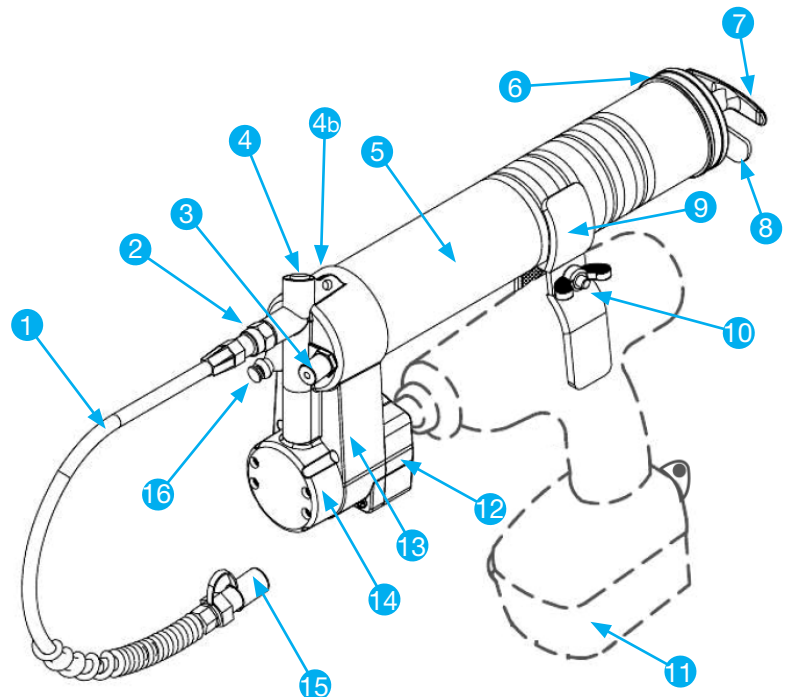





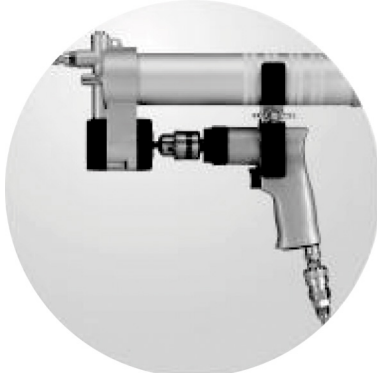


Fig.1

POWER TOOL COMPATIBILITY

The table below shows some typical examples of electric and air powered tools that are compatible with this equipment. For further advice please contact Jefferson Tools.

	
<p>The Coupling Holder with Butterfly Screw has an available width of tolerance to accommodate power tools between 1.5" - 3".</p>	<p>DC Battery Powered Drills 12V-18V Keyless Chuck Type: 3/8" (9.5mm), 1/2" (13mm)</p>
	
<p>DC Battery Powered Screwdriver 12V-18V Hex, Drive shank chuck: 1/4" (6.35mm)</p>	<p>DC Battery Powered Wrench 12V-18V* Square Drive: 3/8" (9.5mm) 1/2" (13mm) *requires adaptor (not included)</p>
	
<p>AC Mains Powered Drill 110V-230V Keyed Chuck Type: 3/8" (9.5mm), 1/2" (13mm)</p>	<p>Air Powered / Pneumatic Drill Keyed Chuck Type: 3/8" (9.5mm), 1/2" (13mm)</p>

SAFETY GUIDELINES



Please read and ensure that you understand all of the operating instructions, safety precautions and warnings in this Instruction Manual before operating or maintaining this equipment. An accident can often be avoided by recognizing a potentially hazardous situation before it occurs, and by observing the appropriate safety procedures. Never use this equipment or modify it in any way that has not been specifically recommended by the manufacturer. Contact a qualified electrician for advice on any issues relating to electrical safety in your working environment.

GENERAL EQUIPMENT SAFETY

- Inspect the grease gun and the power tool for damage and ensure all connections are secure before use. Do not use the equipment if damage is detected.
- Ensure the work area is clean, uncluttered and well lit. Do not operate power tools in explosive atmospheres including flammable liquids, gas or dust which can be ignited during operation.
- Do not operate power tools near children or animals or under the influence of alcohol or medication.
- Always wear suitable protective equipment for the work being carried out.
- Read and follow all the safety precautions stated for the power tools you use with this product including all electrical and pressurised equipment safety requirements.
- Contact Jefferson Tools for further advice on the safe use, maintenance, repair and compatible replacement parts for this equipment.

GREASE GUN SAFETY

- Never place hands or other body parts near the outlet of the grease gun during operation.
- Always hold the grease gun by the handle.
- When working at height, follow all required safety procedures, carry out a risk assessment of the working environment and ensure there is no risk of people moving below the work area.
- Always suitable protective equipment including eye protection for the work being undertaken.
- Ensure all connections between the grease supply and the power tool are secure before operation.
- Pressurised systems are only as strong as their weakest component. Never exceed the maximum working pressure of the grease gun or the power tool.
- Check that the nylon hose is free from damage and securely connected before use. Do not hold the hose during operation.
- Ensure that the grease gun is kept clean and well maintained to ensure safe operation and equipment durability.
- Store in a clean, dry environment out of reach of children.



WARNING:

No responsibility is accepted for incorrect use of this equipment. Incorrect use can result in damage to the equipment and danger to the user. Warranty will be void in the event of incorrect use. The warnings, cautions and instructions discussed in this instruction manual cannot cover all possible conditions and situations that may occur. It must be understood by the operator that common sense and caution are factors which cannot be built into this product, but must be supplied by the operator.

ELECTRICAL SAFETY FOR POWER TOOLS



Ensure that you check the equipment thoroughly to ensure it is safe and fit for purpose before each use. It is important that you inspect all plugs, sockets, power cables and electrical fittings for wear and damage and repair or replace any defective components. The risk of electric shock can be minimised by the correct use of the appropriate electrical safety devices.

- We recommend that you fit a Residual Current Circuit Breaker (RCCB) in the main distribution board and that a Residual Current Device (RCD) is used when operating this equipment.
- The Electricity at Work Act 1989 includes legislation that places legal implications on employers to ensure the safety of electrical devices in the workplace. The regulations dictate that all portable equipment must be inspected regularly and tested to ensure that it is safe for use. 'Portable equipment' means any electrical item that can be moved and this is often referred to as Portable Appliance Testing (PAT). PAT testing should be carried out regularly on this equipment by trained, authorised personnel, as required by the legislation.
- The Health and Safety at Work Act 1974 states that it is the responsibility of the owner of electrical appliances to ensure that both the equipment and working environments are maintained to ensure safe operation at all times.
- Check that all equipment cables are secure, correctly insulated, free from damage, and protected against short circuit and overload before connecting to the power supply. Do not use worn or damaged cables, plugs, sockets or other fittings.
- Ensure that the power supply matches voltage requirements specified on the equipment and that the plug is wired correctly and fitted with the correct fuse.
- If the electrical fuse blows, ensure it is replaced by an identical type of fuse with the same rating.
- Never pull or manoeuvre this equipment into position using the power cable.
- Ensure the power cable is kept away from heat, oil and sharp edges.
- We recommend that the equipment is connected directly to the power supply without the use of extension leads as the resulting voltage drop can reduce motor performance.
- Always disconnect the equipment from the power source before servicing, inspecting, maintaining, cleaning, replacing or checking any parts.

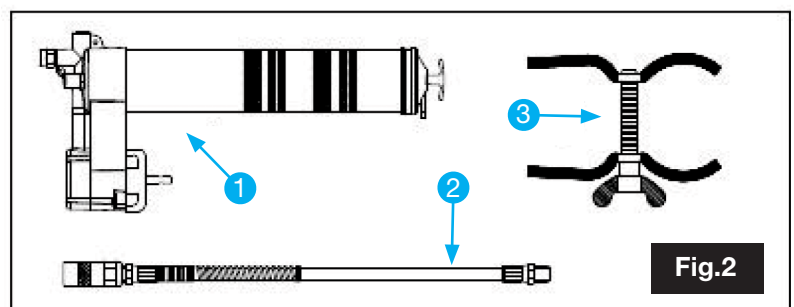
BEFORE FIRST USE

BOX CONTENTS

Check boxed equipment has not been damaged in transit (see **Fig.2**) :

1. Grease Gun
2. 18" Nylon Hose
3. Holder

Recycle all packaging materials and keep the user manual with the equipment for future use.



ASSEMBLY

1. Load the grease to the Container Housing (see **Fig.1, #5** page 3) before assembling the coupling greaser. Put the greaser on a bench or solid surface and connect the power tool to the adaptor (remove any drill bits or adaptors loaded in the chuck). Further instructions for loading the grease gun are shown on page 7.
2. Loosen the chuck and couple the power tool with the connector on the greaser (see **Fig.1, #12** page 3). Tighten the chuck securely and remove before operation.
3. Unscrew the Butterfly Locking Screw (see **Fig.1, #10** page 3) on the Holder to allow sufficient room to place one end over the container tube on the greaser and the other end on the power tool (capacity 1.5" - 3"). Once in position tighten the butterfly until both ends are secure.
4. Connect the 18" High Pressure Nylon Hose to the Grease Gun Outlet (see **Fig.1, #2** page 3).

GREASE LOADING

This equipment is compatible with 3 methods of grease loading:

CARTRIDGE LOADING

1. Remove the two ends of the Container Housing (Gun Head and Plunger Assembly).
2. Pull the Follower Handle back until the Rod is fully extended (carefully release the follower handle to eject / remove used cartridge, if present). Pull back the Follower Handle until fully extended then pull it sideways to latch the Rod groove into the keyhole slot in the container cap (Fig.3)
3. Remove the caps from both ends of the Container Housing and insert the open end of the cartridge with the metal rimmed end toward the bottom cap / plunger end.
4. Loosely assemble the head and the Container Housing and disengage the follower rod from the Container Cap. Engage the Follower Rod with the Follower by rotating the Follower Handle.
5. Unscrew the Container Housing 1-2 turns from the Gun Head and Plunger Assembly and exert force on the follower handle until a little grease is released from the outlet at the Gun Head. Tighten the Container Housing back into the Gun Head and Plunger Assembly.
6. Disengage the Follower Rod from the Follower by rotating the Follower Handle. Push the Follower Rod into the container. Then assemble the Nylon Hose and screw it into the outlet at the Gun Head.

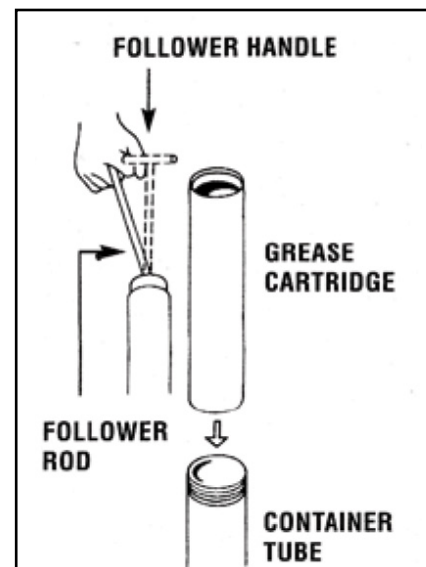
Please Note: Ensure that the grease cartridge is not damaged in anyway before inserting into the Container Housing. The cartridge should fit smoothly and require little force to insert. Do not insert the grease cartridge if it is damaged or warped from its cylindrical shape. If the cartridge is damaged or warped in anyway the equipment will not function correctly and the cartridge could become lodged in the housing. Do not try to re-use empty grease cartridges.

DISPENSER LOADING

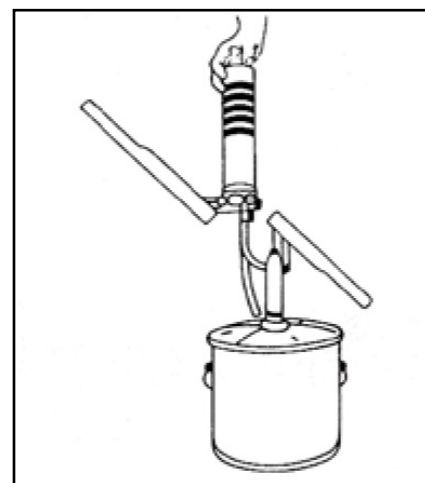
1. Remove any used greased cartridges from the Container Housing.
2. Remove the slotted plug from the Gun Head assembly and insert the required loader fitting that is compatible with the pump being used.
3. Extend the level out on the grease gun and insert the loader fitting into the pump adapter and fill as required (Fig.4). Reassemble the housing.

BULK LOADING

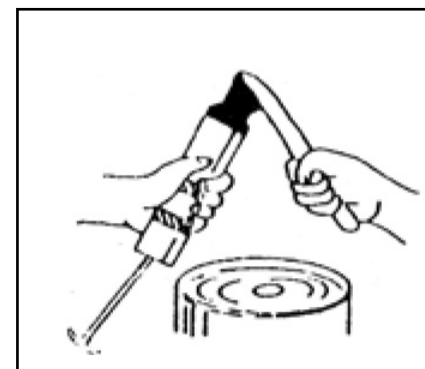
1. Remove the gun head from the Container Housing
2. Draw back the Plunger Handle fully.
3. Use a scoop or utensil to add the required amount of grease to the Container Housing.
4. Reassemble the housing.



Cartridge Loading Fig.3



Dispenser Loading Fig.4



Bulk Loading Fig.5

OPERATION

Ensure that you have read and fully understand all of the safety requirements for the grease gun and the power tool you are using.

1. Set the Power Tool to forward drive
2. Push any trapped air by gently pushing the Plunger into the Container Housing
3. Secure the Nylon Hose Output to the fitting which requires the lubrication
4. Press the trigger on the power tool to activate, the grease will begin to lubricate from the hose output
5. To stop, turn off the power tool and disassemble

Warning: Keep hands away from moving parts and grease outlet during operation. Ensure that any electrical power tools are used within the motor capacity, do not allow motor to overheat. For air powered tools do not exceed the rated working pressure.

MAINTENANCE

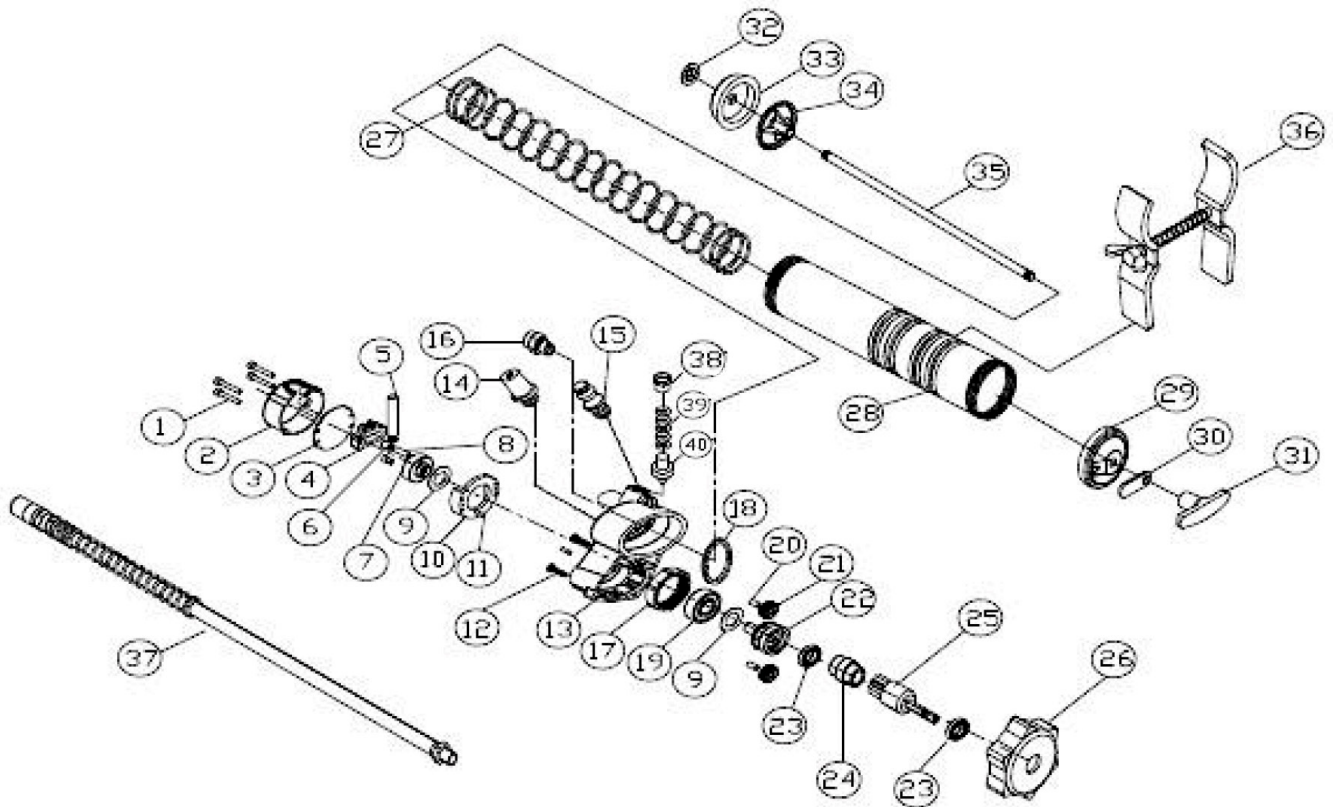
Warning: Risk of electric shock. Always disconnect any equipment from the mains supply before carrying out any cleaning or maintenance.

- Maintenance and repair must be performed by a qualified person. Do not carry out any maintenance work before carefully reading the following instructions. Faulty parts should be replaced only with approved components having the same specifications as the original ones.
- Ensure the hose, connections and container housing are kept clean and free from debris before use.
- Oil any moving parts as required.

TROUBLESHOOTING

Symptom	Possible Causes	Solution
Power tool running but no lubrication from the grease gun.	1. Possible air lock.	1. Disconnect the power tool and disassemble the container housing . Remove the plunger rod fully and then push it firmly back into the container to release the trapped air. Repeat if necessary until the grease begins to flow. Reassemble.
Plunger will not enter the grease cartridge.	1. The cartridge is not compatible. 2. The cartridge may be warped or damaged at the rim.	1. Fit a compatible cartridge. 2. Fit a cartridge that is not damaged.
Leakage from the gun head.	1. The nylon hose is not tightened securely at the gun outlet.	1. Screw / tighten the hose and ensure that it is secure.

PARTS LIST & DIAGRAM



#	Description	Qty	#	Description	Qty
1	Screw	4	21	Small Gear	2
2	Gear Cap	1	22	Control Axle	1
3	Cap Plate	1	23	Axle Bearing	2
4	Piston Controller	1	24	Bearing Divider	1
5	Piston	1	25	Jointer	1
6	Axle Guide	1	26	Protective Cover	1
7	Roller	1	27	Long Spring Kit	1
8	Roller Pin	1	28	Container Tube	1
9	Washer	2	29	Bottom Plate	1
10	Controller Body	1	30	Catch Plate	1
11	Body Pin	2	31	Plunger Handle	1
12	Screw	4	32	Plunger Washer	1
13	Gun Holder	1	33	Plunger	1
14	Filler Plug	1	34	Backlash Gasket	1
15	Air Vent Valve	1	35	Plunger Rod	1
16	Adapter	1	36	Holder	1
17	Gear Holder	1	37	18" High Pressure Nylon Hose	1
18	Gasket	1	38	Round Plug	1
19	Roller Bearing	1	39	Pressure Vent	1
20	Gear Pin	2	40	Vent Spring	1

LIMITED WARRANTY STATEMENT

Jefferson Professional Tools & Equipment, or hereafter "Jefferson" warrants its customers that its products will be free of defects in workmanship or material. Jefferson shall, upon suitable notification, correct any defects, by repair or replacement, of any parts or components of this product that are determined by Jefferson to be faulty or defective.

This warranty is void if the equipment has been subjected to improper installation, storage, alteration, abnormal operations, improper care, service or repair.

Warranty Period

Jefferson will assume both the parts and labour expense of correcting defects during the stated warranty periods below.

All warranty periods start from the date of purchase from an authorised Jefferson dealer. If proof of purchase is unavailable from the end user, then the date of purchase will be deemed to be 3 months after the initial sale to the distributor.

1 Year

JEFUNPCPGR - UNIVERSAL POWER COUPLING GREASE GUN

90 Days

- All replacement parts purchased **outside** of the warranty period

Important: All parts used in the repair or replacement of warranty covered equipment will be subject to a minimum of 90 days cover or the remaining duration of the warranty period from the original date of purchase.

Warranty Registration / Activation

You can register and activate your warranty by visiting the Jefferson Tools website using the following address:

www.jeffersontools.com/warranty and completing the online form. Online warranty registration is recommended as it eliminates the need to provide proof of purchase should a warranty claim be necessary.

Warranty Repair

Should Jefferson confirm the existence of any defect covered by this warranty the defect will be corrected by repair or replacement at an authorized Jefferson dealer or repair centre.

Packaging & Freight Costs

The customer is responsible for the packaging of the equipment and making it ready for collection. Jefferson will arrange collection and transportation of any equipment returned under warranty. Upon inspection of the equipment, if no defect can be found or the equipment is not covered under the terms of the Jefferson warranty, the customer will be liable for any labour and return transportation costs incurred. These costs will be agreed with the customer before the machine is returned.

** Jefferson reserve the right to void any warranty for damages identified as being caused through misuse*

Warranty Limitations

Jefferson will not accept responsibility or liability for repairs made by unauthorised technicians or engineers. Jefferson's liability under this warranty will not exceed the cost of correcting the defect of the Jefferson products.

Jefferson will not be liable for incidental or consequential damages (such as loss of business or hire of substitute equipment etc.) caused by the defect or the time involved to correct the defect. This written warranty is the only express warranty provided by Jefferson with respect to its products.

Any warranties of merchantability are limited to the duration of this limited warranty for the equipment involved.

Jefferson is not responsible for cable wear due to flexing and abrasion. The end user is responsible for routine inspection of cables for possible wear and to correct any issues prior to cable failure.

Claiming Warranty Coverage

The end user must contact Jefferson Professional Tools & Equipment (Tel: +44 (0) 1244 646 048) or their nearest authorised Jefferson dealer where final determination of the warranty coverage can be ascertained.

Step 1 - Reporting the Defect

Online Method:

- Visit our website www.jeffersontools.com/warranty and complete the Warranty Returns form. You can complete the form online and submit it to us directly or download the form to print out and return by post.

Telephone Method:

Contact your Jefferson dealer or sales representative with the following information:

- Model number
- Serial number (usually located on the specification plate)
- Date of purchase

A Warranty Returns form will be sent to you for completion and return by post or fax, together with details of your nearest authorised Jefferson repair centre. On receipt of this form Jefferson will arrange to collect the equipment from you at the earliest convenience.

Step 2 - Returning the Equipment

It is the customer's responsibility to ensure that the equipment is appropriately and securely packaged for collection, **together with a copy of the original proof of purchase**. Please note that Jefferson cannot assume any responsibility for any damage incurred to equipment during transit. Any claims against a third party courier will be dealt with under the terms & conditions of their road haulage association directives.

NOTE: Jefferson will be unable to collect or process any warranty requests without a copy of the original proof of purchase.

Step 3 - Assessment and Repair

On receipt, the equipment will be assessed by an authorised Jefferson engineer and it will be determined if the equipment is defective and in need of repair and any repairs needed are covered by the warranty policy. In order to qualify for warranty cover all equipment presented must have been used, serviced and maintained as instructed in the user manual.

Where repair is not covered by the warranty a quotation for repair, labour costs and return delivery will be sent to the customer (normally within 7 working days).

NOTE: If the repair quotation is not accepted Jefferson Professional Tools & Equipment will invoice **1 hour labour time at £30 per hour plus return carriage costs (plus VAT)**.

In cases where no fault can be found with the equipment, or, if incorrect operation of the equipment is identified as the cause of the problem, a minimum of 1 hour labour at **£30 per hour plus carriage costs** will be required before the equipment will be despatched back to the customer.

Any equipment repaired or replaced under warranty will normally be ready for shipment back to the customer within 7 working days upon receipt of the equipment at an authorised Jefferson Repair centre (subject to part availability). Where parts are not immediately available Jefferson will contact you with a revised date for completion of the repair.

General Warranty Enquiries

For any further information relating to Jefferson warranty cover please call **+44 (0) 1244 646 048** or send your enquiry via email to **warranty@jeffersontools.com**

Disclaimer:

The information in this document is to the best of our knowledge true and accurate, but all recommendations or suggestions are made without guarantee. Since the conditions of use are beyond their control, Jefferson Tools® disclaim any liability for loss or damage suffered from the use of this data or suggestions. Furthermore, no liability is accepted if use of any product in accordance with this data or suggestions infringes any patent. Jefferson Tools® reserve the right to change product specifications and warranty statements without further notification. All images are for illustration purposes only.

IMPORTANT! SAFETY FIRST!

Before attempting to use this product please read all the safety precautions and operating instructions outlined in this manual to reduce the risk of fire, electric shock or personal injury.

Jefferson Tools,
Herons Way,
Chester Business Park,
Chester,
United Kingdom,
CH4 9QR

Tel. +44 (0)1244 646 048
Email: sales@jeffersontools.com

www.jeffersontools.com