

## Jefferson 4500 Lumens Portable Site Light with Tripod And Pouch JEFTRCH39

### Features

- Quick and Easy Set-up.
- Swivel Lights
- Extendable Tripod
- Six Modes (Warm, Low-Med-High) (White, Low-Med-High)
- Metal Hooks for Hanging.
- Magnetic Base for Mounting.
- Removable Light Head.
- Lockable tripod legs for easy transport.
- Power Bank Feature
- Battery Indicator
- Carrier Bag



### Specification

#### Charging performance:

Charging current: 2A

Charging time: 7h

Charging: 5v 2A Type-c (2 meter cable included)

**Battery:** 2 x 21700 7.4v 4000mAh

**Power Bank Function:** 5V, 1A

**Watt:** 12w

**Water Resistance:** IP54

**Drop test:** 1M 6 time

**Light Material:** Aluminum, ABS

**Tripod Material:** Aluminum, Nylon

**LED:** White 6000k - 7000k Warm 3500-4500k

**Size:** 210 x 100 x 95 (head) 800 x 100 x 95 (including tripod)

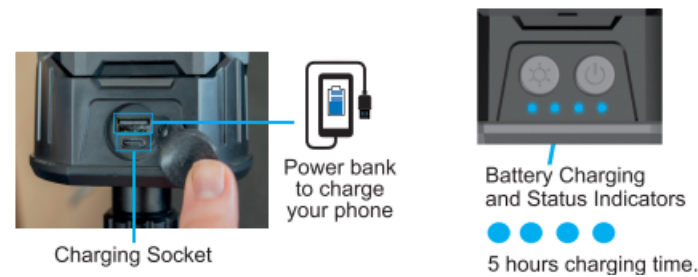
**Discharge performance:** Switch modes: SMD Low - SMD Mid - SMD High - Off

### Brightness and Runtime

Switch mode	SMD WHITE			SMD WARM		
	HIGH	MID	LOW	HIGH	MID	LOW
Brightness:	4500Lms	2500Lms	1200Lms	4500Lms	2500Lms	1200Lms
Run time:	2hr	4.5hr	9hr	2h	4.5	7h
LUX (1m) :	1760	310	480	1760	1000	480
Beam distance (m)	75	56	39	75	56	39
Beam Angle:	120°	120°	120°	120°	120°	120°
CRI:	>80	>80	>80	>80	>80	>80
Colour Temperature:	6000-7000K			3500-4500K		

### Charging the Floodlight:

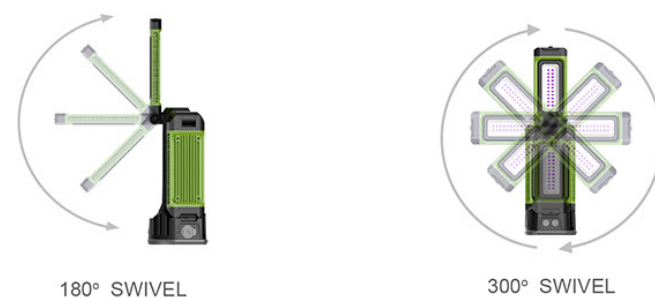
The light can be used continuously when plugged into suitable 5V2A power source but it will only operate on medium mode.



### Stand & light Set up



### Swivel Features



### Operation

Flashlight, other multi-function light.

It has the function of power indicator to remind users of charging and maintenance in time.

The product is retractable and easy to collect and carry

1. The lens and transparent cover should not be scratched by sharp objects.
2. When not in use for a long time, please put it in full charge and charge every 3 months.
3. When using the high beamfunction, the product can't directly irradiate the eyes, so as to avoid the damage of vision.
4. Products need to be kept away from.

### Declaration Of Conformity

We, Jefferson Professional Tools & Equipment, as the authorised European & UK representative of the manufacturer, declare that this equipment conforms to the requirements of the following:

**CE:** EMC: 2014/30/EU EN IEC 55015:2019+A11:2020 EN61547:2009 EN IEC 61000-3-2:2019+A1:2021  
EN 6100-3-3:2013+A2:2021+AC:2022

**UKCA:** BS EN IEC 55015:2019+A11:2020 BS EN61547:2009 BS EN IEC 61000-3-2:2019+A1:2021  
BS EN 6100-3-3:2013+A2:2021+AC:2022



**Product Name:**

Jefferson 4500 Lumens Portable Site Light C/W Tripod And Pouch JEFTRCH39

**Notified Testing Body:**

SHENZHEN TIMEWAY TESTING LABORATORIES. Zone C, 1st Floor, Block B, Jun Xiang Da Building, Zhongshan Park Road, West, Tong Le Village, Nanshan District, Shenzhen, China

**Signed:** Stephen McIntyre  
Operations Manager

**Date:** 17th May 2024

**Name and address of manufacturer:**

Jefferson Professional Tools & Equipment 24 Lisgorgan Lane,  
Upperlands, BT46 5TE Tel: +44 (0)1244 646 048 (UK)  
+353 (0)1473 0300 (ROI) Email: info@jeffersonstools.com



**Jefferson**<sup>®</sup>  
PROFESSIONAL TOOLS & EQUIPMENT

Jefferson Professional Tools & Equipment  
24 Lisgorgan Lane, Upperlands, BT46 5TE

Tel: +44 (0)1244 646 048 (UK)  
+353 (0)1473 0300 (ROI)

Email: [info@jeffersonstools.com](mailto:info@jeffersonstools.com)