



**Important:** Please read and ensure that you understand all of the operating instructions, safety precautions and warnings in this Instruction Manual before operating or maintaining this equipment. Save this user manual and keep it with the equipment for future reference. An accident can often be avoided by recognizing a potentially hazardous situation before it occurs, and by observing the appropriate safety procedures.

Never use this equipment or modify it in any way that has not been specifically recommended by the manufacturer. Ensure that the heater is maintained, cleaned and serviced regularly and stored in a suitable environment. Check the equipment for any signs of damage before use. Check the Contact a qualified electrician for advice on any issues relating to electrical safety in your working environment.

## DESCRIPTION

- 400L Portable Diesel Tank
- Supplied with a 12V electric pump, 4M electric cable and clamps, and a 4M delivery hose with automatic fuel nozzle
- Manufactured from HDPE for the safe transportation and dispensing of diesel fuel when refilling on-site equipment
- Can be safely secured and transported on a pick-up truck or van, using grooves for tie down straps and six handles for positioning
- Complies to ADR 1.1.3.1.C for exemption from requirements of ADR regulations
- Supplied with lockable cover
- Not suitable for petrol

## SPECIFICATIONS

Capacity:	400L
Power:	180W
Voltage:	12V
Current:	15A
Flow Rate:	20L/Min
Duty Cycle:	30mins On / 30mins Off
Net Weight:	43.16kg
Dimensions:	1100 x 800 x 720mm

## SAFETY GUIDELINES



**WARNING:** This tank must only be used for diesel fuel.

- Place the tank on a flat surface before filling.
  - Secure the tank to strong points with ratchet straps before transporting in or on a vehicle.
  - Maintain the pump in good condition (use an authorised service agent).
  - Replace or repair damaged parts. Use recommended parts only. Non authorised parts may be dangerous and will invalidate the warranty.
  - Keep the pump clean for best and safest performance.
  - Ensure the power supply (vehicle battery) corresponds with the requirements of the pump (**12V DC**).
  - Disconnect from battery when not in use.
  - Wear protective gloves, and protective clothing when working around fuel.
- A full range of personal safety equipment is available from your Jefferson stockist.
- Keep children and unauthorised persons away from the working area.
  - Do not place the tank near any heat source.
  - Do not start or stop the pump by connecting or disconnecting the battery clamps.
  - Do not allow the unit to get wet or operate the pump with wet hands.
  - Do not use the pump where explosive or flammable vapours are present.
  - Do not tamper with the pump connections.
  - Do not use the equipment if any component is damaged and do not modify or adapt for other uses than those described in this manual.

## EQUIPMENT IDENTIFICATION

Refer to photos shown in Fig.1 & Fig.1A below)

1	Filler / Breather Cap
2	Pump On/Off Switch
3	Battery Clips
4	Automatic Fluid Nozzle
5	Securing Strap Locations
6	Moulded Hand Holds
7	Vent Plug
8	Fork Locations

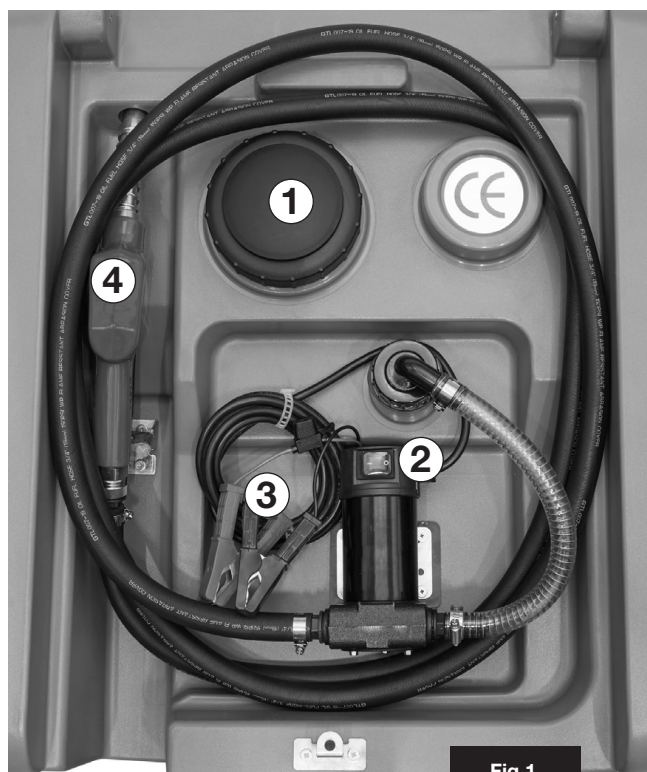


Fig.1



Fig.1A

## OPERATION & MAINTENANCE

### Transportation

- Move the empty tank assembly with two persons using the hand holds moulded into the base of the unit (**Fig.1A.7**).
- Move by forklift truck using the fork locations shown in (**Fig.1A.8**). Ensure that the filler / breather cap (**Fig.1A.1**) is closed before moving.
- Secure the tank to the carrying vehicle by ratchet straps. Locations for the straps are moulded into the tank (**fig.1A.5**).

### Filling

Warning; Do not run the pump without fuel in the tank. To do so will damage the pump's internal components and will invalidate your warranty. The tank is filled by unscrewing the filler / breather cap (**Fig.1A.1**) in an anticlockwise direction. Refit the filler cap immediately after filling. Warning take care not to overfill the tank.

### Fuel Dispensing

1. Before connecting to a battery, make sure that the pump switch (**Fig.1A.2**) is in the 'OFF' (O) position. Connect the battery clips to the 12V battery, observing correct polarity (red clamp to +ve terminal, black clamp to -ve terminal)
2. Set the pump switch to the 'ON' (I) position.
3. Unwind sufficient hose and place the nozzle (**Fig.2**) in the receiving tank and pull the trigger. Delivery will commence and continue until the trigger is released.
4. The trigger can be locked in one of three positions by engaging the latch (**fig.4**) to hold the trigger open. Never leave the nozzle unattended with the trigger latched open.
5. Slight pressure on the trigger will release the latch.
6. When the level in the receiving tank reaches the nozzle, delivery will stop automatically
7. When delivery is complete, switch off the pump. Ensure the hose is wound into its housing on the tank and that the nozzle is secured in its storage place.

### Maintenance:

The pump contains no user-servicable parts. Repairs should only be undertaken by competent persons:

- Check the integrity and condition of all the hose connections regularly.
- If any leakage is evident, strip the joint and wind PTFE tape around the male thread.
- Check all electrical connections and cables for wear and damage. Rectify any faults found.
- Ensure all components are kept clean, especially the dispenser nozzle. Clean regularly with a damp, soapy cloth. Never use abrasive or solvent cleaners to clean the equipment.

Fig.2



#### WARNING:

Never operate the pump continuously for more than **30 minutes**. The duty cycle of the unit is 30 minutes, after which the motor must be left to cool down for a further 30 minutes. **Never run the unit for more than 2-3 minutes with the delivery nozzle closed.**



PLEASE RECYCLE

### Environmental Protection

Recycle any packaging and unwanted materials instead of disposing of them as waste. All tools, accessories and packaging should be sorted, taken to a recycling centre and disposed of in a manner which is compatible with the environment. When the product becomes completely unserviceable, reaches the end of its working life and requires disposal, drain off any fluids (if applicable) into approved containers and dispose of the product and the fluids according to local regulations.



### Information on Disposal for Users of Waste Electrical & Electronic Equipment:

This symbol on the product(s) and / or accompanying documents means that used electrical and electronic products should not be mixed with general household waste. For proper treatment, recovery and recycling, please take this product(s) to designated collection points where it will be accepted free of charge.



### RoHS - RESTRICTION OF HAZARDOUS SUBSTANCES

Based on randomly-sampled examination of the evaluated product, the results of Lead, Cadmium, Hexavalent chromium, Polybrominated biphenyls (PBB), Polybrominated diphenyl ethers (PBDE) in tested samples comply with the limits as set by RoHS Directive 2011/65/EU ANNEX II; recasting 2002/95/EC.

### WARRANTY

Jefferson Professional Tools & Equipment, or hereafter "Jefferson" warrants its customers that its products will be free of defects in workmanship or material. Jefferson shall, upon suitable notification, correct any defects, by repair or replacement, of any parts or components of this product that are determined by Jefferson to be faulty or defective. This warranty is void if the equipment has been subjected to improper installation, storage, alteration, abnormal operations, improper care, service or repair. Unless otherwise stated, the guarantee is 12 months from purchase date, proof of which is required for any claim. Full details of how you can register and activate your warranty as well as instructions on how to make a warranty claim are available on our website: [warranty@jeffersontools.com](mailto:warranty@jeffersontools.com). For any further information relating to Jefferson warranty cover please call +44 (0)1244 646 048 (UK) or +353 (0)1473 0300 (ROI).

### EU DECLARATION OF CONFORMITY

We, Jefferson Professional Tools & Equipment, as the authorised European Community representative of the manufacturer, declare that this equipment conforms to the requirements of the following:

**Directives:** 2006/42/EC (Machinery); 2014/35/EU (Low Voltage); 2014/30/EU (Electromagnetic Compatibility); 2011/65/EU (RoHS)

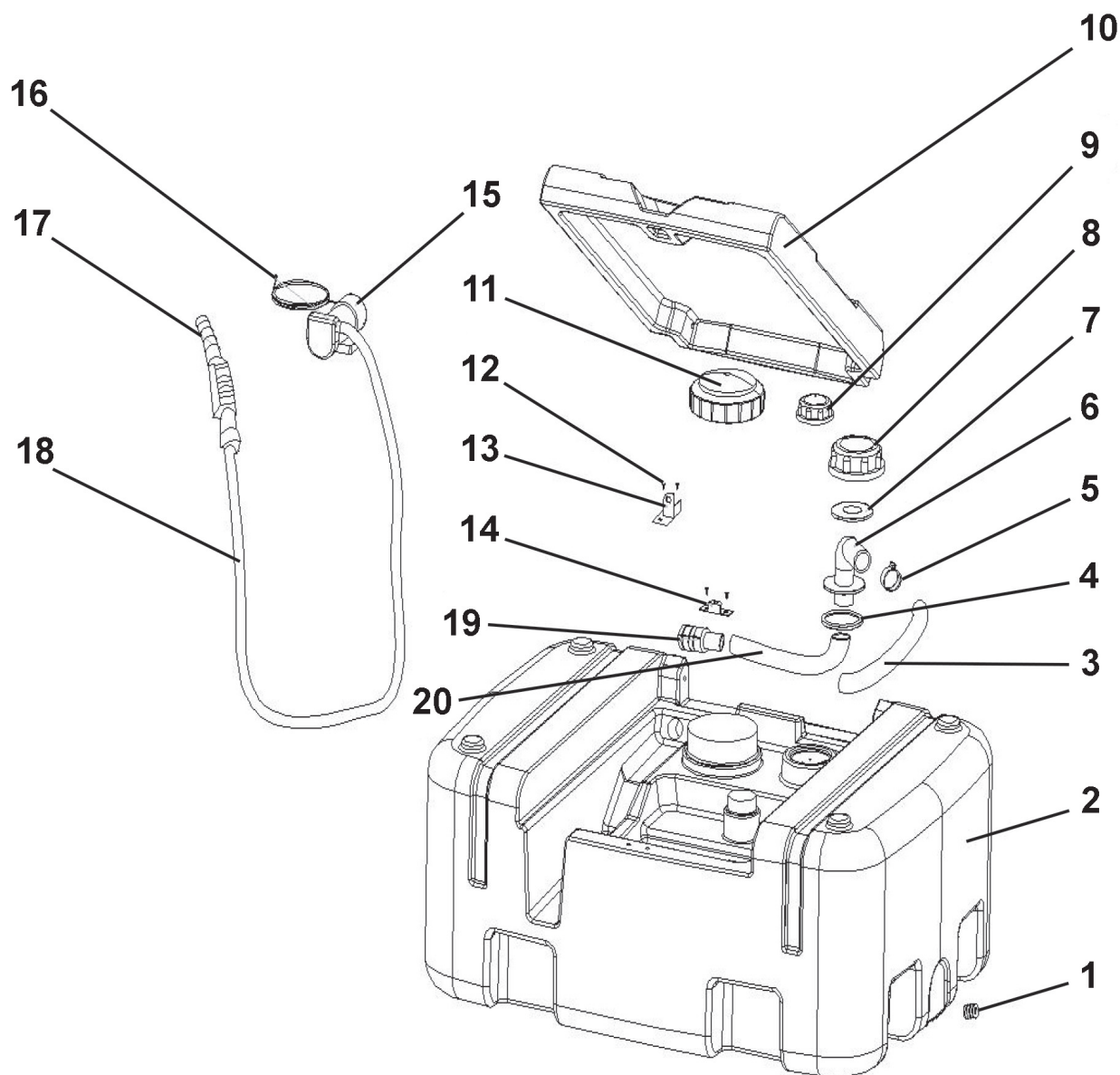
**Standards:** EN 60335-1:2012+A11:2014+A13:2017+A1:2019+ A2: 2019+A14:2019, EN 62233:2008, EN 60335-2-41:2003+A1:2004+A2:2010, EN 60204-1:2018, EN ISO 12100:2010, EN 809:1998+A1:2009, EN ISO 13849-1:2015, EN IEC 61000-6-3:2021, EN IEC 61000-6-1:2019

**Signed by:** Stephen McIntyre (Operations Director)

**Date:** 29.11.2022

Name and address of manufacturer or authorised representative:  
Jefferson Professional Tools & Equipment, 24 Lisgorgan Lane, Upperlands, BT46 5TE  
**T:** +44 (0)1244 646 048 (UK) / +353 (0)1473 0300 (ROI) **E:** [info@jeffersontools.com](mailto:info@jeffersontools.com)

## PARTS LIST & DIAGRAM



#	Description	#	Description
1	Vent Plug	11	Beathing Cap
2	400L Tank	12	Machine Screw Pan Head Phillips M6 x 10mm
3	3/4" Connection Hose	13	Nozzle Holder
4	Lower Seal for Suction Elbow	14	Tank Lid Lock Holder
5	Hose Clip	15	Electric Pump 12V
6	Suction Elbow	16	Bracket for Electric Pump
7	Upper Seal for Suction Elbow	17	Automatic Fluid Nozzle
8	Suction Cap	18	Delivery Hose 4m
9	Level Gauge	19	Filter
10	Tank Lid	20	Hose

**Please Note:** It is our policy to continually improve products and as such we reserve the right to alter data, specifications and component parts without prior notice. No liability is accepted for any incorrect use of product. Spare parts must be fitted by a competent person.

## IMPORTANT! SAFETY FIRST!

Before attempting to use this product please read all the safety precautions and operating instructions outlined in this manual to reduce the risk of fire, electric shock or personal injury.



Jefferson Professional Tools & Equipment  
24 Lisgorgan Lane,  
Upperlands,  
BT46 5TE

**Tel:** +44 (0)1244 646 048 (UK) / +353 (0)1473 0300 (ROI)  
**Email:** [info@jeffersonstools.com](mailto:info@jeffersonstools.com)