

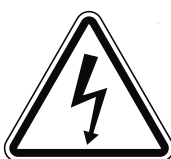


IMPORTANT! SAFETY FIRST!

Before attempting to use this product please read all the safety precautions and operating instructions outlined in this manual to reduce the risk of fire, electric shock or personal injury.



Refer to
instructions



Electrical
shock hazard



Hot
surfaces



Do not
cover

This product is only suitable for well insulated spaces or occasional use.

FEATURES

- ★ Ideal for domestic and industrial use.
- ★ Heat conducting ceramic elements that produce superior, odour free heat within a small space.
- ★ PTC heating is a unique and efficient thermal technology producing heat with no condensation, gas or fumes.

SPECIFICATIONS

Model	JEFHTPTC2.0-230
Voltage	220 - 240V ~
Required power	2000W
Current	8.3 - 9.1A
Required Fuse	10A
Setting	25/1000/2000W
Self-Resetting Thermostat	65°C
Product measurement (mm)	160 x 210 x 217
N.W.(KG)	1.7

MAINTENANCE

- ★ **WARNING!** Ensure the unit is unplugged from the mains power supply, cooled down and on a level surface before carrying out any maintenance.
- ★ **DO NOT** use the heater without the protective grill fitted.
- ★ Jefferson recommend that all maintenance and repairs are carried out by a qualified technician.

1. INTRODUCTION

The JEFHTPTC2.0-230 industrial fan heater with PTC heat conducting ceramic elements, produces dry heat without condensation, fumes and odours. The atmospheric room thermostat maintains consistent temperatures at a pre-set level, making the heater ideal for industrial applications with two heat settings or fan only. The JEFHTPTC2.0-230 comes supplied with power cable and 3-pin plug.

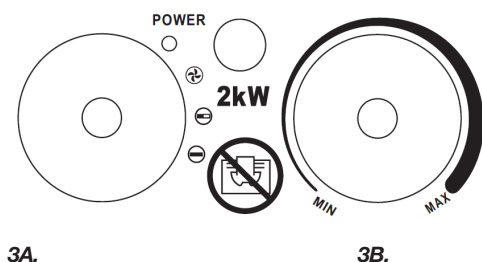
2. SAFETY

- 2.1 This appliance can be used by children aged from 8 years and above and persons with reduced physical, sensory or mental capabilities or lack of experience and knowledge, with supervision and correct instruction concerning the safe use of the appliance and potential hazards involved. Children shall not play with the appliance. Cleaning and user maintenance shall not be made by children without supervision.
- 2.2 Children of less than 3 years should be kept away unless continuously supervised.
- 2.3 Children aged from 3 years and less than 8 years shall only switch on/off the appliance provided that it has been placed or installed in its intended normal operating position. They should be supervised and instructed concerning the safe use of the appliance and understand the hazards involved. Children aged from 3 years and less than 8 years shall not plug in, regulate and clean the appliance or perform user maintenance.
- 2.4 **WARNING:** In order to avoid overheating, do not cover the heater.
- 2.5 **CAUTION** - some parts of this product can become very hot and cause burns. Particular attention has to be given where children and vulnerable people are present.
- 2.6 Before use, please check the marking on the power cord. Depending on the power cord type this appliance may be used in different ambient conditions:

Type	You can use the appliance in	Do not use in
H07RN-F	Household, warehouses and workshops, building sites or greenhouses.	-
H05RN-F	Household, warehouses and workshops or greenhouses.	Building sites.
H05RR-F	Household, warehouses and workshops.	Building sites or greenhouses.

- 2.7 The fan heater is not suitable for use outdoors in damp weather, in bathrooms or in other wet or damp environments.
- 2.8 **WARNING:** The fan heater can become very hot, and should therefore be placed at a safe distance from flammable objects such as furniture, curtains or other fabrics.
- 2.9 DO NOT cover the fan heater.
- 2.10 The fan heater must not be located immediately below a socket outlet.
- 2.11 DO NOT connect the fan heater using an on/off timer or other equipment which can automatically switch the device on.
- 2.12 The fan heater must NOT be placed in rooms where flammable liquids or gases are used or stored.
- 2.13 If an extension cord is used, it must be as short as possible and always be fully extended.
- 2.14 You must NOT connect other appliances to the same mains socket as the fan heater.
- 2.15 DO NOT use this fan heater in the immediate surroundings of a bath, a shower or a swimming pool.
- 2.16 If the supply cord is damaged, it must be replaced by the manufacturer, its service agent or similarly qualified persons in order to avoid a hazard.
- 2.17 Make sure heater is always under surveillance and keep children and animals away from it.
- 2.18 DO NOT place the appliance on moving vehicles or some where that is can easily be tipped over.
- 2.19 When not in use, unplug the appliance. Don't leave the heater on for a considerable amount of time when in use. Pull the plug straight out, and never remove the plug by pulling on the cord.
- 2.20 Always ensure the air inlet is free from obstacles such as curtains or kept away from areas where the air inlet can easily be blocked.
- 2.21 The power coupler is waterproof when not in use. In order to prevent possible electric shock or leakage current, never use the appliance with wet hand or operate the appliance when there is water on the power cord.
- 2.22 DO NOT dispose of electrical appliances as unsorted municipal waste, use separate collection facilities. Contact you local government for information regarding the collection systems available. If electrical appliances are disposed of in landfills or dumps, hazardous substances can leak into the groundwater and get into the food chain, damaging your health and well-being.
- 2.23 This appliance is not intended for use by persons (including children) with reduced physical, sensory or mental capabilities, or lack of experience and knowledge, unless they have been given supervision or instruction concerning use of the appliance by a person responsible for their safety.
- 2.24 Children should be supervised to ensure that they do not play with the appliance.

3. OPERATIONAL INSTRUCTIONS



- 3A.** Selector with heat setting.
3B. Thermostat dial.

- 3.1 Position the fan heater so that it stands upright on a firm surface and at a safe distance from wet environments and flammable objects.
- 3.2 Connect the fan heater to the mains.
- 3.3 Set the thermostat knob to the MAX and let the heater operate with full power.
- 3.4 The fan heater will switch on when the heating selector is set to one of the power settings.
- 3.5 Once the room reaches the required temperature, heating element will stop working. Once the temperature decreases, the heating element will be working. The fan heater now starts and stops automatically and thus keeps the room temperature constant.
- 3.6 Before switching off the heater, please turn the thermostat to MIN position and turn the switch to fan position, let the appliance cool down for two minutes then turn off the heater and pull out the plug.

4. CLEANING AND STORAGE

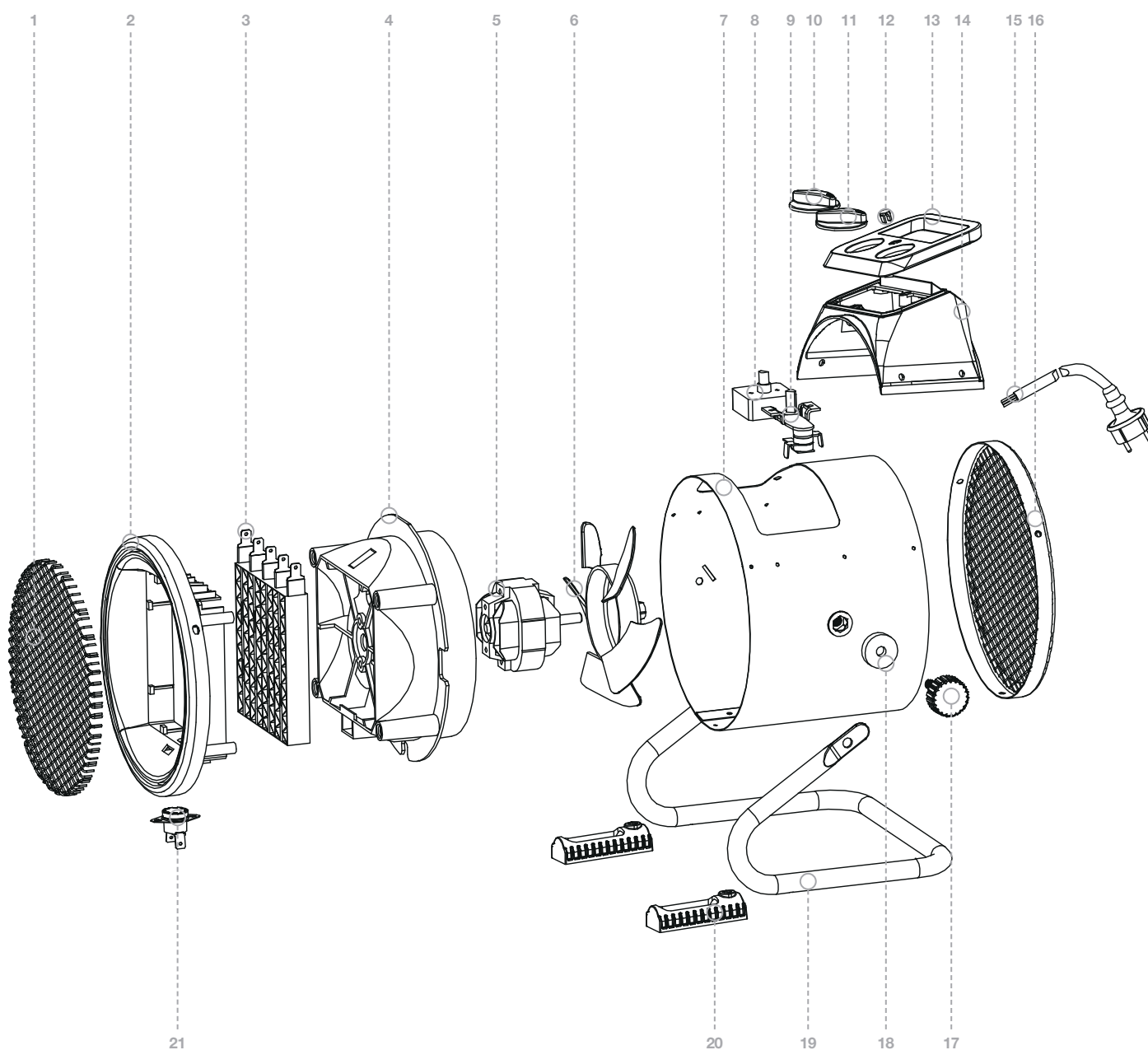
- 4.1 Before cleaning the appliance, disconnect it from the socket and let it cool down. Wipe the enclosure with a soft sponge. In extremely dirty areas, wipe with a sponge dipped in <50°C water and mild detergent, then dry the heater enclosure with clean cloth.
WARNING!
 Be careful not to let the water enter the appliance.
 Don't splash water onto the heater, and never use solvent like gasoline etc. to clean the heater.
- 4.2 Clean and dry the cord and plug, and pack it in a plastic bag.
- 4.3 When you store the heater, let it cool down first. Keep it dry. Then cover it with a plastic bag, put in a packing box and store it in a dry, ventilated place.

5. TROUBLE SHOOTING

You can solve many common problems easily, saving you the cost of a possible service call. Try the suggestions below to see if you can solve the problem before calling the service center.

Problem	Possible cause	Treatment
The heater does not operate, even when it is plugged in and the switch, thermostat are switched on.	The plug is loose, bad connection.	Pull out the plug, check the connection of the plug and socket. Then connect again.
	No power in socket outlet.	Insert the plug in a proper socket.
The heating element is glowing.	The input voltage is too high or too low.	Use power supply according to the rating on the label.
	The air inlet grill is blocked.	Keep the heater far away from articles like curtain, plastic bag, paper and other things which can cover the inlet or can easily cover the air inlet.
The appliance didn't heat up, or only ventilator worked.	The switch was not set at a heating setting.	Turn the switch to heat setting.
	The thermostat was not activated.	Turn the thermostat and listen if there is open/close noise. If there is no click and the thermostat is not damaged, the heater will automatically switch on when the appliance cools down.
	The self-resetting cut-out operated.	Turn the heater off and inspect the blockage of inlet or outlet. Disconnect the plug and wait at least 10 minutes for the protection system to reset, before attempting to restart the heater.
Abnormal noise.	The appliance is not stood upright.	Put the heater on a level surface.

6. PARTS DIAGRAM



7. PARTS LIST

KEY NO.	DESCRIPTION	MATERIAL/SPECIFICATION	QTY
1	Front grill	SPCC	1
2	Air outlet shutter, fixed ring	PA66 + 30%GF	1
3	PTC	220 - 240V 2000W	1
4	Air flue	PA66 + 30%GF	1
5	Motor	YJ58-16A 230V 50Hz 25W Class 120	1
6	Fan	PA	1
7	Outer casing	SPCC	1
8	Rotary switch	B3400 250V 10A	1
9	Bi-metal thermostat	YT-WN16 250V / 16A / 85°C / T250 / TUV	1
10	Switch knob	ABS	1
11	Thermostat knob	ABS	1
12	Indicator-lamp cover	PC	1
13	Control box cover	PA66 + 30%GF	1
14	Control box seat	PA66 + 30%GF	1
15	Power cord	H05VV-F 3G1.0	1
16	Back grill	SPCC	1
17	Pinching screw	M6*25mm/PA	2
18	Rubber gasket	Ø 8mm / Rubber	2
19	Steel sube	Ø 13*1.0mm / Stell	1
20	Foot pad	PP	2
21	Self-resetting thermostat	250V / 16A / 65°C	1

Model identifier(s): JEFHTPTC2.0-230

Item	Symbol	Value	Unit	Item	
Heat output				Type of heat input, for electric storage local space heaters only (select one)	
Normal heat output	Pnom	2	kW	Manual heat charge control with integrated thermostat	No
Minimum heat output (indicative)	Pmin	1	kW	Manual heat charge control with room and/or outdoor temperature feedback	No
Maximum continuous heat output	Pmax	2	kW	Electronic heat charge control with room and/or outdoor temperature feedback	No
Auxiliary electricity consumption				Fan assisted heat output	No
At nominal heat output	elmax	N/A	kW	Type of heat output/room temperature control (select one)	
At nominal heat output	elmin	N/A	kW	Single stage heat output and no room temperature control	No
In standby mode	elSB	N/A	W	Two or more manual stages, no room temperature control	No
				With mechanic thermostat room temperature control	Yes
				With electronic room temperature control	No
				Electronic room temperature control plus day timer	No
				Electronic room temperature control plus week timer	No
				Other control options (multiple selections possible)	
				Room temperature control, with presence detection	No
				Room temperature control, with open window detection	No
				With distance control option	No
				With adaptive start control	No
				With working time limitation	No
				With black bulb sensor	No

JEFFERSON TOOLS

Hérons Way, Chester Business Park, Chester, United Kingdom, CH4 9QR

Tel: +44 (0) 1244 646 048

Email: sales@jeffersonstools.com

This image shows a single sheet of white paper with horizontal ruling lines. The lines are evenly spaced and run across the width of the page. There are no margins, text, or other markings on the paper.

LIMITED WARRANTY STATEMENT

Jefferson Professional Tools & Equipment, or hereafter "Jefferson" warrants its customers that its products will be free of defects in workmanship or material. Jefferson shall, upon suitable notification, correct any defects, by repair or replacement, of any parts or components of this product that are determined by Jefferson to be faulty or defective.

This warranty is void if the equipment has been subjected to improper installation, storage, alteration, abnormal operations, improper care, service or repair.

Warranty Period

Jefferson will assume both the parts and labour expense of correcting defects during the stated warranty periods below.

All warranty periods start from the date of purchase from an authorised Jefferson dealer. If proof of purchase is unavailable from the end user, then the date of purchase will be deemed to be 3 months after the initial sale to the distributor.

1 Year

- Jefferson PTC 2000W Industrial Electrical Fan Heater [JEFHTPTC2.0-230].

90 Days

- All replacement parts purchased outside of the warranty period

Important: All parts used in the repair or replacement of warranty covered equipment will be subject to a minimum of 90 days cover or the remaining duration of the warranty period from the original date of purchase.

Warranty Registration / Activation

You can register and activate your warranty by visiting the Jefferson Tools website using the following address: www.jeffersonstools.com/warranty and completing the online form.

Online warranty registration is recommended as it eliminates the need to provide proof of purchase should a warranty claim be necessary.

Warranty Repair

Should Jefferson confirm the existence of any defect covered by this warranty the defect will be corrected by repair or replacement at an authorized Jefferson dealer or repair centre.

Packaging & Freight Costs

The customer is responsible for the packaging of the equipment and making it ready for collection. Jefferson will arrange collection and transportation of any equipment returned under warranty. Upon inspection of the equipment, if no defect can be found or the equipment is not covered under the terms of the Jefferson warranty, the customer will be liable for any labour and return transportation costs incurred. These costs will be agreed with the customer before the machine is returned.

NOTE: * Jefferson reserve the right to void any warranty for damages identified as being caused through misuse *

Warranty Limitations

Jefferson will not accept responsibility or liability for repairs made by unauthorised technicians or engineers. Jefferson's liability under this warranty will not exceed the cost of correcting the defect of the Jefferson products.

Jefferson will not be liable for incidental or consequential damages (such as loss of business or hire of substitute equipment etc.) caused by the defect or the time involved to correct the defect. This written warranty is the only express warranty provided by Jefferson with respect to its products.

Any warranties of merchantability are limited to the duration of this limited warranty for the equipment involved.

Claiming Warranty Coverage

The end user must contact Jefferson Professional Tools & Equipment: (Tel: +44 (0) 1244 646 048) or their nearest authorised Jefferson dealer where final determination of the warranty coverage can be ascertained.
Step 1 - Reporting the Defect

Online Method:

Visit our website www.jeffersonstools.com/warranty and complete the Warranty Returns form. You can complete the form online and submit it to us directly or download the form to print out and return by post.

Telephone Method:

Contact your Jefferson dealer or sales representative with the following information:

- Model number
- Serial number (usually located on the specification plate)
- Date of purchase

A Warranty Returns form will be sent to you for completion and return by post or fax, together with details of your nearest authorised Jefferson repair centre. On receipt of this form Jefferson will arrange to collect the equipment from you at the earliest convenience.

Step 2 - Returning the Equipment

It is the customer's responsibility to ensure that the equipment is appropriately and securely packaged for collection, together with a copy of the original proof of purchase. Please note that Jefferson cannot assume any responsibility for any damage incurred to equipment during transit. Any claims against a third party courier will be dealt with under the terms & conditions of their road haulage association directives.

NOTE: Jefferson will be unable to collect or process any warranty requests without a copy of the original proof of purchase.

Step 3 - Assessment and Repair

On receipt, the equipment will be assessed by an authorised Jefferson engineer and it will be determined if the equipment is defective and in need of repair and any repairs needed are covered by the warranty policy. In order to qualify for warranty cover all equipment presented must have been used, serviced and maintained as instructed in the user manual.

Where repair is not covered by the warranty a quotation for repair, labour costs and return delivery will be sent to the customer (normally within 7 working days). Note: If the repair quotation is not accepted Jefferson Professional Tools & Equipment will invoice 1 hour labour time at £30 per hour plus return carriage costs (plus VAT).

In cases where no fault can be found with the equipment, or, if incorrect operation of the equipment is identified as the cause of the problem, a minimum of 1 hour labour at £30 per hour plus carriage costs will be required before the equipment will be despatched back to the customer.

Any equipment repaired or replaced under warranty will normally be ready for shipment back to the customer within 7 working days upon receipt of the equipment at an authorised Jefferson Repair centre (subject to part availability). Where parts are not immediately available Jefferson will contact you with a revised date for completion of the repair.

General Warranty Enquiries

For any further information relating to Jefferson warranty cover please call: +44 (0) 1244 646 048 or send your enquiry via email to warranty@jeffersonstools.com

Disclaimer:

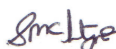
The information in this document is to the best of our knowledge true and accurate, but all recommendations or suggestions are made without guarantee. Since the conditions of use are beyond their control, Jefferson Tools® disclaim any liability for loss or damage suffered from the use of this data or suggestions. Furthermore, no liability is accepted if use of any product in accordance with this data or suggestions infringes any patent. Jefferson Tools® reserve the right to change product specifications and warranty statements without further notification. All images are for illustration purposes only.

EC Declaration of Conformity

We, Jefferson Professional Tools & Equipment, as the authorised European Community representative of the manufacturer, declare that this equipment conforms to the requirements of the following Directives:

- EN 60335/1:2012+A11 – Household And Similar Electrical Appliances (Safety)
- EN 60335-2-30:2009+A11 – Household And Similar Electrical Appliances (Safety)
- EN 62233:2008 – Measurement Methods For Electromagnetic Fields

Signed by: Stephen McIntyre (Operations Director)



Date: 22.05.18

Tel. +44 (0)1244 646 048

Email: sales@jeffersonstools.com

Name and address of manufacturer or authorised representative:

Jefferson Tools,
Herons Way,
Chester Business Park,
Chester,
United Kingdom,
CH4 9QR