

Professional Tyre Inflator

0.5m Hose with Clip Connector

SPECIFICATION

| | |
|-----------------------|---|
| Display type: | Dial display |
| Chuck type: | Clip on connector |
| Scale: | 0.5-12bar, 7-180psi |
| Air inlet connection: | 1/4" Female BSP Thread 1/4" Male (Quick Release) |
| Hose length: | 0.53m(21") rubber hose |
| Dimensions: | 288 x 96 x 39mm |
| Weight: | 0.4kg |
| Accuracy: | ±2psi |
| Operation: | Full press grip to inflate, Halfway press to deflate, Release to measure pressure |
| Supply pressure max: | 15 bar, 218psi |
| Advised application: | Workshops, garages |
| Flow rate: | 500L / min @ 174 psi |
| Working temperature: | -10°C - 50°C |
| Warranty: | 1 year |



OPERATION

- 1 Remove the valve core cap, connect the inflation chuck to the valve core, and ensure no air leakage.
- 2 Tire pressure detection : the measured in-tire pressure will be displayed once connected without the need to press the trigger.
- 3 Inflating operation : Hold the trigger, and the inflator will inflate the tire.
- 4 Deflating operation: Press the trigger halfway, and the tire will be deflated via the inflator.

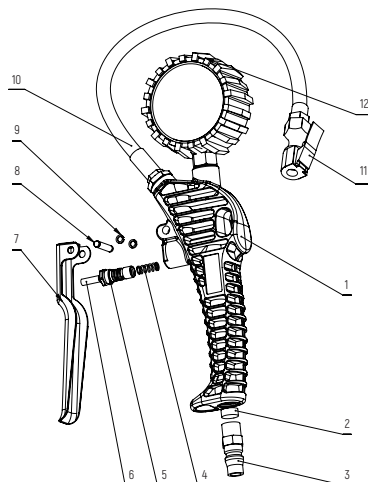
IMPORTANT

- An oil-water separator is needed to be connected for compressed air at the inlet end.
- To prevent personal injury, do not point the inflation chuck to any part of the body.
- Manufacturer reserves the right to change the technical specifications of the product without prior notice

PARTS BREAKDOWN

No. Part Name

1. Mainbody (1)
2. Filter Cotton (1)
3. Plug (1)
4. Spring (1)
5. Valve base (1)
6. Valve pin (1)
7. Trigger (1)
8. Pin (1)
9. Ring (2)
10. Hose (1)
11. Chuck (1)
12. Gauge (1)



DECLARATION OF CONFORMITY

We, Jefferson Professional Tools & Equipment, as the authorised European representative of the manufacturer, declare that this equipment conforms to the requirements of the following:

Machinery Directives 2006/42/EC



Supply of Machinery Safety Regulations 2008 - SI 2008/1597, SI 2011/1043, SI 2011 /2157 SI 2019/696



Notified Testing Body:

Safenet Certification Services Ltd.
204 Roselawn House, National Technology Park,
Limerick, V94 6R68, Ireland.

Description:

Professional Tyre Inflator - 0.50m Hose with Clip Connector - JEFGTYLCLC09

Signed: Stephen McIntyre

Date: 25th June 2024

Name and address of manufacturer or authorised representative:

Jefferson Professional Tools & Equipment
24 Lisgorgan Lane, Upperlands, BT46 5TE

Tel: +44 (0)1244 646 048 (UK) +353 (0)1473 0300 (ROI)
Email: info@jeffersonstools.com

Jefferson[®]
PROFESSIONAL TOOLS & EQUIPMENT

Jefferson Professional Tools & Equipment
24 Lisgorgan Lane, Upperlands, BT46 5TE

Tel: +44 (0)1244 646 048 (UK)
+353 (0)1473 0300 (ROI)

Email: info@jeffersonstools.com

