

Digital Professional Tyre Inflator

0.50m Hose with Twin Push Connector

SPECIFICATION

Display type:	Digital display
Chuck type:	Twin - Push on / Hold on
Scale:	0.516bar, 7-232psi, 50-1600kpa, 0.5-16kgf
Air Inlet size:	1/4" Female BSP Thread 1/4" Male (Quick Release)
Hose length:	0.53m (21") rubber hose
Dimensions:	237 x 94 x 115mm
Weight:	0.7kg
Accuracy:	DIN EN 12645:2015
Operation:	Full press grip to inflate, Halfway press to deflate, Release to measure pressure
Supply pressure max:	15bar
Advised application:	Industrial, workshops, garages
Flow Rate:	900L/min@174psi
Battery:	Rechargeable lithium-ion Battery
Charger:	Type C charger
Charging time:	2.5 Hours
Run Time:	40 Hours
Warranty:	1 year

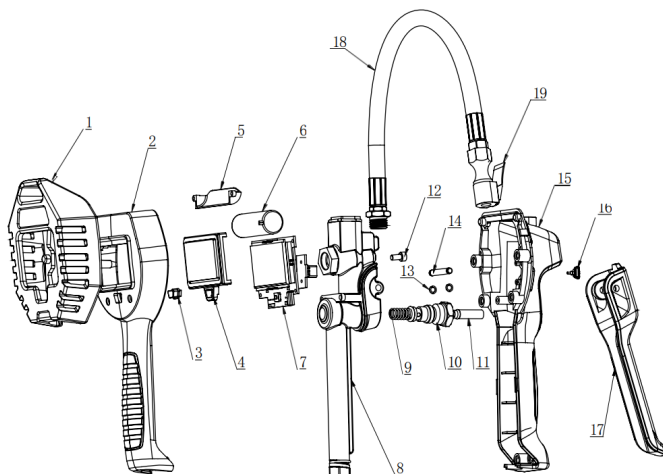
FEATURES

- Easy to Read LCD Display
- Four Units Choice (PSI, BAR, KPA, KGF)
- Prolongs Tire Life
- Long Reach Twin Push on Connector.

OPERATION

1. Remove tire valve cap.
2. Push and hold the connector onto the tyre valve using the most convenient side of the twin valve connector.
3. Press the grip to inflate, press the grip half-way to deflate.
4. On: The inflator will turn on automatically when connect to the tire. You can also press and hold the button to turn on the inflator. If it's not used, the inflator will be turned off automatically after 90 seconds.
5. Unit Change: Press the button above 3 seconds, enter unit change mode, then press the button shortly to choose the desired unit. The unit chosen will be default unit for following usage.
6. The inflator's battery is rechargeable lithium-ion battery, the low battery signal on the top right will be flashing continuously, to remind user to recharge the battery.
7. Measuring Range: 0.5-12BAR (7-174PSI). Reading Accuracy is 0.01BAR (0.1PSI). Max. Inlet Pressure is 15BAR (218PSI).

PARTS BREAKDOWN



No. Part Name

- 1 Rubber Cover (1)
- 2 Upper Body Cover (1)
- 3 Button (1)
- 4 Transparency Cover (1)
- 5 Battery platen (1)
- 6 18500 Lithium Battery (1)
- 7 H42Li PCB Assembly (1)
- 8 Main Body (1)
- 9 Wrench Spring (1)
- 10 Valve Seat Assembly (1)
- 11 Valve Spool Assembly (1)
- 12 Screw M4x8 (1)
- 13 Split baffle ring (2)
- 14 Pin (1)
- 15 Under Body Cover (1)
- 16 Charging Port Dust Plug (1)
- 17 Wrench (1)
- 18 Hose Assembly (1)
- 19 Chuck (1)



DECLARATION OF CONFORMITY

We, Jefferson Professional Tools & Equipment, as the authorised European representative of the manufacturer, declare that this equipment conforms to the requirements of the following:

Electromagnetic Compatibility Directives 2014/3/EU

RoHS Directives 2011/65/EU



Supply of Machinery Safety Regulations 2008 - SI 2008/1597, SI 2011/1043, SI 2011 /2157 SI 2019/696



Notified Testing Body:

Safenet Certification Services Ltd.
204 Roselawn House, National Technology Park,
Limerick, V94 6R68, Ireland.

Description:

Digital Professional Tyre Inflator - 0.50m Hose with Twin Push Connector - JEFGTYJTP10D

Signed: Stephen McIntyre

Date: 25th June 2024

Name and address of manufacturer or authorised representative:

Jefferson Professional Tools & Equipment
24 Lisgorgan Lane, Upperlands, BT46 5TE

Tel: +44 (0)1244 646 048 (UK) +353 (0)1473 0300 (ROI)
Email: info@jeffersonstools.com

Jefferson[®]
PROFESSIONAL TOOLS & EQUIPMENT

Jefferson Professional Tools & Equipment
24 Lisgorgan Lane, Upperlands, BT46 5TE

Tel: +44 (0)1244 646 048 (UK)
+353 (0)1473 0300 (ROI)

Email: info@jeffersonstools.com

