

**4.5L • 1100W**

**DISENFECTANT  
SPRAY FOGGER**



**JEFF0G45-230**

**User Manual**  
v.1.1



## CONTENTS

|  |           |
|--|-----------|
| Contents   | <b>2</b>  |
| About This Document  | <b>2</b>  |
| Introduction   | <b>3</b>  |
| Specifications   | <b>3</b>  |
| Safety Guidelines  | <b>4</b>  |
| Operation  | <b>5</b>  |
| Maintenance  | <b>6</b>  |
| Troubleshooting  | <b>6</b>  |
| Parts List & Diagram                                       | <b>7</b>  |
| Environmental Protection                                   | <b>8</b>  |
| WEEE (Waste Electrical and Electronic Equipment) STATEMENT | <b>8</b>  |
| Limited Warranty Statement                                 | <b>9</b>  |
| EU Declaration Of Conformity                               | <b>11</b> |

## ABOUT THIS DOCUMENT

This manual has been compiled by Jefferson Tools and is an integrated part of the product with which it's enclosed and should be kept with it for future reference. Please read all of the information supplied in this User Manual before operating this product.

This manual describes the purpose for which the product has been designed and contains all the necessary information to ensure its correct and safe use. We recommend that you read the information supplied before carrying out any maintenance or repair. By following all the general safety instructions contained in this manual you will help to ensure operator safety and extend the potential life span of the equipment.

All photographs and drawings in this manual are supplied by Jefferson Tools to help illustrate the operation of the product. Whilst every effort has been made to ensure accuracy of information contained in this manual our policy of continuous improvement determines the right to make modifications without prior warning.

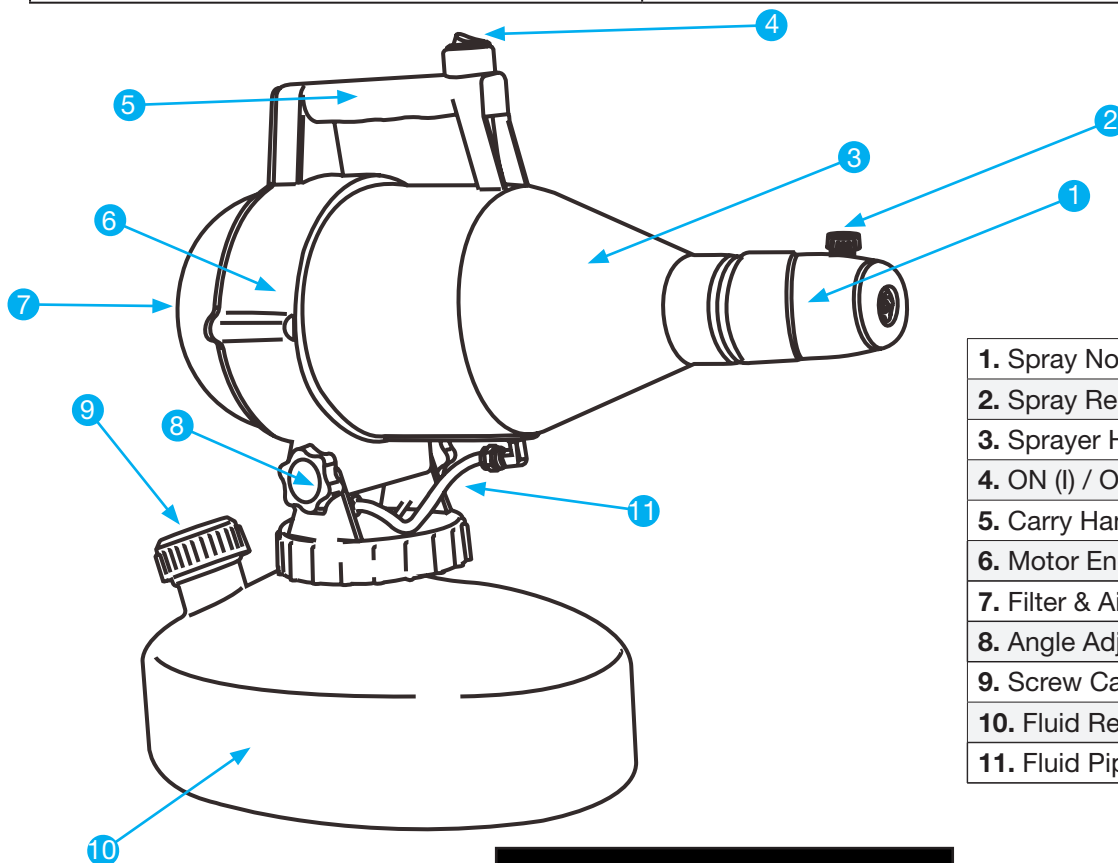
The information contained in this Instruction Manual is designed to assist you in the safe operation and maintenance of the equipment. Some illustrations in this Instruction Manual may show details or attachments that differ from those on your own model. Contact your nearest Jefferson Dealer if you are unsure about any information included in this manual or require any additional information about the safe use, operation maintenance, or repair of this equipment.

## INTRODUCTION

- Chemical sprayer / fogger designed to sanitise large areas quickly and efficiently
- Suitable for disinfection, sterilisation, insecticidal and other spraying applications
- Portable & easy to use with accurate spray orientation
- Adjustable spray volume & particle size with rapid diffusion
- Powerful 1100W motor and 5M power cable with 13A UK Plug
- Compatible with oil & water based disinfectants between 0-35°C
- Ideal for sterilising offices, schools, waiting rooms, shops, hospitals, hotels, restaurants, vehicles, industrial work places etc.

## SPECIFICATIONS

|                          |                    |
|--------------------------|--------------------|
| Model Number:            | JEFFOG45-230       |
| Input Supply:            | 230V ~ 50Hz        |
| Power Cable / Plug:      | 5M / 13A           |
| Rated Power:             | 1100W              |
| Tank Capacity:           | 4.5L               |
| Spray Volume:            | 150-260 ml/min     |
| Spray Range:             | 8-10M              |
| Particle Size:           | 10-150 Microns     |
| Fluid Temperature Range: | 0-35°C             |
| Rated Runtime:           | 20 Minutes         |
| Dimensions:              | 405 x 260 x 415 mm |
| Weight:                  | 3.5kg              |



- |                            |
|----------------------------|
| 1. Spray Nozzle            |
| 2. Spray Regulation Valve  |
| 3. Sprayer Housing         |
| 4. ON (I) / OFF (O) Switch |
| 5. Carry Handle            |
| 6. Motor Enclosure         |
| 7. Filter & Air Inlet      |
| 8. Angle Adjustment Knob   |
| 9. Screw Cap               |
| 10. Fluid Reservoir        |
| 11. Fluid Pipe             |

## SAFETY GUIDELINES



Please read and ensure that you understand all of the operating instructions, safety precautions and warnings in this Instruction Manual before operating or maintaining this equipment. An accident can often be avoided by recognizing a potentially hazardous situation before it occurs, and by observing the appropriate safety procedures. Never use this equipment or modify it in any way that has not been specifically recommended by the manufacturer. Contact a qualified electrician for advice on any issues relating to electrical safety in your working environment.

## GENERAL EQUIPMENT SAFETY

- Inspect the equipment for damage and ensure all connections are secure before connecting this equipment to the power supply. Do not use the equipment if damage is detected. When not in use, ensure that the equipment is turned off and disconnect the plug from the mains power supply.
- Do not operate near children or animals or direct spray toward others.
- Do not operate the equipment if under the influence of drugs or alcohol.
- This equipment should only be operated by fully trained and competent individuals.
- Before carrying out any maintenance work on the machine, switch off the machine and disconnect the plug from the mains power supply.
- Do not alter the sprayer for any other purpose other than that which it was designed.
- The rated operation time is 20 minutes. Allow the motor to cool down after each cycle to prevent damage.
- Ensure that the working environment is clear from clutter and tripping hazards.
- Avoid spraying in wet or windy conditions. Do not use in dusty environments or locations near volatile or inflammable materials
- Always wear suitable protective equipment for the products you are spraying, check the manufacturers guidelines and Safety Data Sheets (SDS) to ensure Personal Protective Equipment (PPE) is correctly rated to protect against any harmful chemicals in use. Typical protection equipment may include spray suits, overalls, masks, respirators, goggles, boots and gloves.
- Store the equipment in a dry safe location, away from children after use.
- Ensure that the sprayer and reservoir are cleaned and flushed after use.
- Ensure any remaining chemical detergents are disposed of in a safe manner, according to local regulations to avoid contaminating the environment.
- Remove and wash all protective equipment immediately after you have finished spraying and wash hands thoroughly before eating, drinking etc to avoid any chemical contamination.
- Contact Jefferson Tools for further advice on the safe use, maintenance, repair and compatible replacement parts for this equipment.



### **WARNING:**

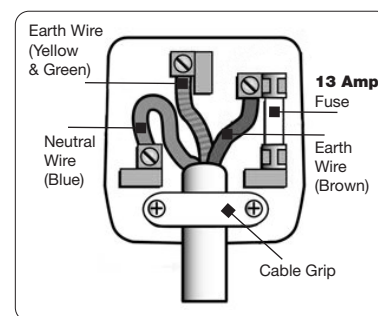
No responsibility is accepted for incorrect use of this equipment. Incorrect use can result in damage to the equipment and danger to the user. Warranty will be void in the event of incorrect use. The warnings, cautions and instructions discussed in this instruction manual cannot cover all possible conditions and situations that may occur. It must be understood by the operator that common sense and caution are factors which cannot be built into this product, but must be supplied by the operator.

## ELECTRICAL SAFETY



Ensure that you check the equipment thoroughly to ensure it is safe and fit for purpose before each use. It is important that you inspect all plugs, sockets, power cables and electrical fittings for wear and damage and repair or replace any defective components. The risk of electric shock can be minimised by the correct use of the appropriate electrical safety devices.

- We recommend that you fit a Residual Current Circuit Breaker (RCCB) in the main distribution board and that a Residual Current Device (RCD) is used when operating this equipment.
- The Electricity at Work Act 1989 includes legislation that places legal implications on employers to ensure the safety of electrical devices in the workplace. The regulations dictate that all portable equipment must be inspected regularly and tested to ensure that it is safe for use. 'Portable equipment' means any electrical item that can be moved and this is often referred to as Portable Appliance Testing (PAT). PAT testing should be carried out regularly on this equipment by trained, authorised personnel, as required by the legislation.
- The Health and Safety at Work Act 1974 states that it is the responsibility of the owner of electrical appliances to ensure that both the equipment and working environments are maintained to ensure safe operation at all times.
- Check that all equipment cables are secure, correctly insulated, free from damage, and protected against short circuit and overload before connecting to the power supply. Do not use worn or damaged cables, plugs, sockets or other fittings.
- Ensure that the power supply matches voltage requirements specified on the equipment and that the plug is wired correctly and fitted with the correct fuse.
- If the electrical fuse blows, ensure it is replaced by an identical type of fuse with the same rating.
- Never pull or manoeuvre this equipment into position using the power cable.
- Ensure the power cable is kept away from heat, oil and sharp edges.
- We recommend that the equipment is connected directly to the power supply without the use of extension leads as the resulting voltage drop can reduce motor performance.
- Always disconnect the equipment from the power source before servicing, inspecting, maintaining, cleaning, replacing or checking any parts.



## OPERATION GUIDE

**Note:** Please refer to the diagram shown on **Page 4** for reference.

1. Add required proportions of spray product and water (if required) to the fluid reservoir by unscrewing the cap and pouring carefully (use a funnel if necessary). Clean up any spillage from the equipment and local surfaces before proceeding. Ensure that the liquid temperature range is between 0-35°C.
2. Check the Safety Data Sheet (SDS) for the fluid product and take any precautions recommended by the manufacturer to ensure safe use of the equipment. Carry out a risk assessment of the working environment and take any steps necessary to ensure safe working practices and applications.
3. Ensure that you and any bystanders in the working environment are wearing correctly rated Personal Protection Equipment for the application (check the manufacturers SDS to confirm required equipment and ratings).
4. Connect the equipment to the rated power supply as indicated in the equipment specifications. Ensure the socket is protected by a residual circuit breaker (RCD-RCCB).
5. Turn the equipment ON using the power switch #4 (ON **(I)** / OFF **(O)**).
6. Adjust the flow of fluid on the spray regulation valve (#2) as required.
7. Begin to spray in the area required using slow careful movements following the rotation of the gear plate. If the rotation speed decreases check the nozzle for any debris and clean if required.
8. When you have finished spraying, close the spray regulation valve and move the power switch to the OFF **(O)** position, carefully dispose of any unused solution in the reservoir and flush out the sprayer with a cleansing solution for 2-3 minutes and allow to dry off before packing away.

## MAINTENANCE

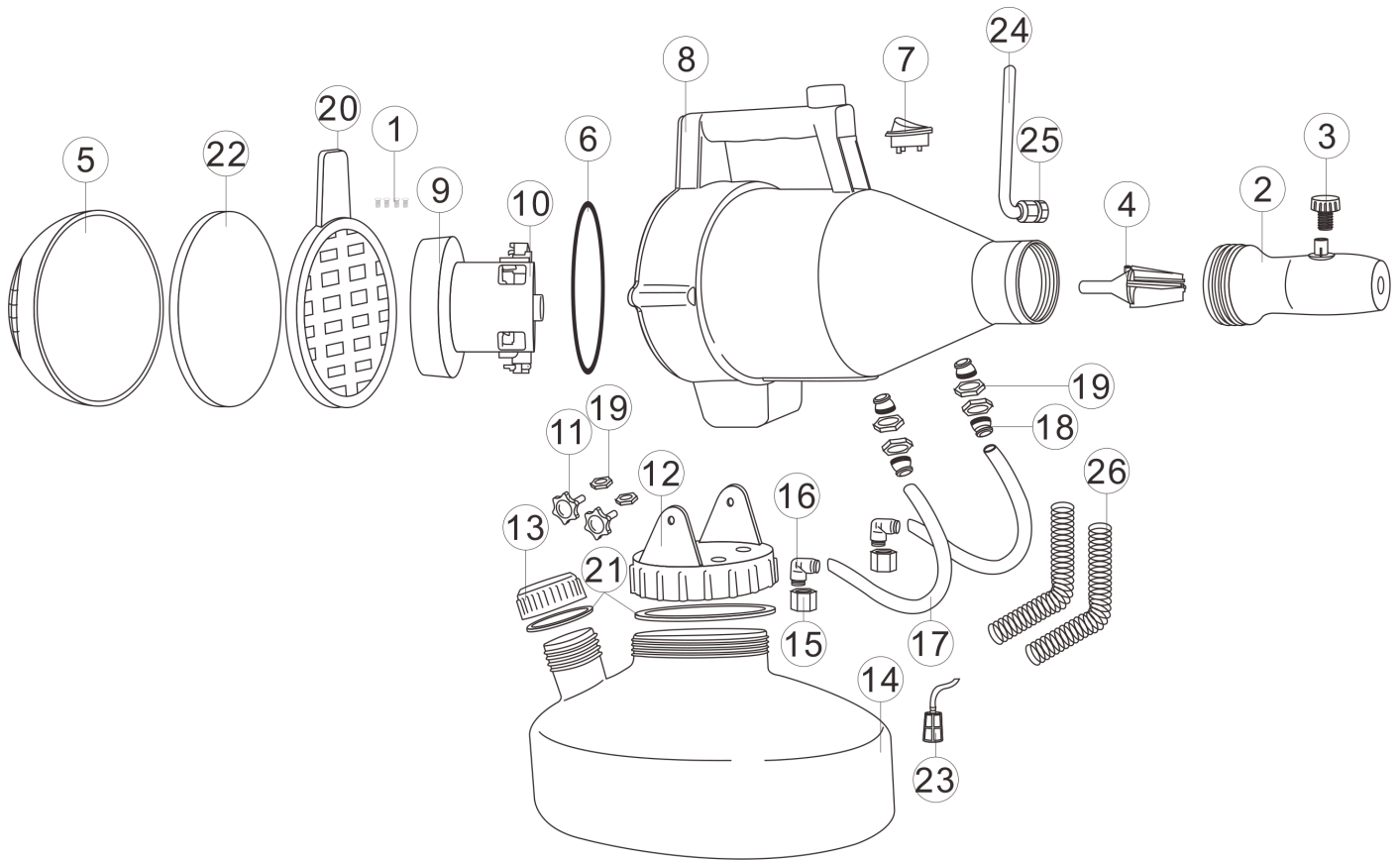
**Warning:** *Risk of electric shock. Always disconnect this equipment from the mains supply before carrying out any cleaning or maintenance.*

- Maintenance and repair must be performed by a qualified person. Do not carry out any maintenance work before carefully reading the following instructions.
- While replacing electrical parts of the equipment, turn off the switch and remove the mains power supply.
- Faulty parts should be replaced only with approved components having the same specifications as the original ones.
- Before performing any maintenance work, turn off the machine and remove the mains power supply. Maintenance work on electric parts of the equipment should be performed by a qualified technician only.
- Do not clean the machine or its peripheral devices without first removing the mains power supply.
- This equipment should be cleaned with a clean moist cloth and flushed thoroughly with a suitable cleaning solution after each use to remove any chemical residues. For stubborn dirt on the exterior housing use a moist cloth with a mild detergent.
- Ensure the spray nozzle and fluid reservoir are clean before use.
- Never immerse the appliance in water or cleaning solution or hold directly under running water.
- Allow the equipment to cool sufficiently after use before cleaning it.
- Do not use aggressive, chemical or abrasive cleaning agents.
- Do not use solvents such as petrol, alcohol, ammonia water etc.
- Check the air inlet and filter and remove any dirt or debris as required to ensure a smooth and constant air flow.

## TROUBLESHOOTING

| Symptom                                   | Possible Causes   | Solution  |
|---|---|---|
| <b>Device will not function or spray.</b> | <ol style="list-style-type: none"> <li>1. Air leak / insufficient pressure</li> <li>2. No power supply or incorrect power supply.</li> <li>3. Blown fuse.</li> <li>4. Damaged motor.</li> <li>5. Spray regulation valve closed. Blockage in the fluid delivery pipe or nozzle.</li> </ol> | <ol style="list-style-type: none"> <li>1. Check that the housing and air inlet is completely sealed</li> <li>2. Check the power is on and motor is running. Check that the power supply matches the specification shown in the technical data.</li> <li>3. Replace the fuse with one matching the required rating.</li> <li>4. Repair or replace the motor. Contact Jefferson Tools for advice on repair and replacement parts.</li> <li>5. Check and ensure that the spray regulation valve is opened as required. Check and remove any debris or residue in the delivery pipe or nozzle to allow liquid to flow.</li> </ol> |

**PARTS LIST & DIAGRAM**



| #  | Description            | Qty | #  | Description            | Qty |
|----|------------------------|-----|----|------------------------|-----|
| 1  | Screw                  | 8   | 14 | Fluid Reservoir        | 1   |
| 2  | Nozzle Front Section   | 1   | 15 | Nut                    | 1   |
| 3  | Spray Regulation Valve | 1   | 16 | L-Type Internal Thread | 1   |
| 4  | Nozzle Fan Blade       | 1   | 17 | Connecting Pipe        | 2   |
| 5  | Rear Cover             | 1   | 18 | Connecting Body Bolt   | 4   |
| 6  | O-Ring                 | 1   | 19 | Nut                    | 6   |
| 7  | Switch                 | 1   | 20 | Net Cover              | 1   |
| 8  | Sprayer Enclosure      | 1   | 21 | Seal Ring              | 2   |
| 9  | Seal Ring              | 1   | 22 | Filter Screen          | 1   |
| 10 | Motor                  | 1   | 23 | Effluent Filter        | 1   |
| 11 | Hand Screw             | 2   | 24 | Power Cable            | 1   |
| 12 | Connecting Cover       | 1   | 25 | Waterproof Joint       | 1   |
| 13 | Water Inlet Cover      | 1   | 26 | Spring                 | 2   |

## ENVIRONMENTAL PROTECTION



**PLEASE  
RECYCLE**

Recycle any packaging and unwanted materials instead of disposing of them as waste. All tools, accessories and packaging should be sorted, taken to a recycling centre and disposed of in a manner which is compatible with the environment. When the product becomes completely unserviceable, reaches the end of its working life and requires disposal, drain off any fluids (if applicable) into approved containers and dispose of the product and the fluids according to local regulations.

## WEEE (Waste Electrical and Electronic Equipment) STATEMENT

### Information on Disposal for Users of Waste Electrical & Electronic Equipment



This symbol on the product(s) and / or accompanying documents means that used electrical and electronic products should not be mixed with general household waste. For proper treatment, recovery and recycling, please take this product(s) to designated collection points where it will be accepted free of charge.

#### For private households:

**Dispose of this product at the end of its working life and in compliance with the EU Directive on Waste Electrical and Electronic Equipment (WEEE). Contact your local solid waste authority for recycling information for this equipment.**

Disposing of this product correctly will help save valuable resources and prevent any potential negative effects on human health and the environment, which could otherwise arise from inappropriate waste handling.

Please contact your local authority for further details of your nearest designated collection point.

Penalties may be applicable for incorrect disposal of this waste, in accordance with you national legislation.

#### For business users in the European Union:

If you wish to discard electrical and electronic equipment, please contact your dealer or supplier for further information.

#### Information on Disposal in other Countries outside the European Union:

This symbol is only valid in the European Union. If you wish to discard this product please contact your local authorities or dealer and ask for the correct method of disposal.



## LIMITED WARRANTY STATEMENT

Jefferson Professional Tools & Equipment, or hereafter "Jefferson" warrants its customers that its products will be free of defects in workmanship or material. Jefferson shall, upon suitable notification, correct any defects, by repair or replacement, of any parts or components of this product that are determined by Jefferson to be faulty or defective.

This warranty is void if the equipment has been subjected to improper installation, storage, alteration, abnormal operations, improper care, service or repair.

### Warranty Period

Jefferson will assume both the parts and labour expense of correcting defects during the stated warranty periods below.

All warranty periods start from the date of purchase from an authorised Jefferson dealer. If proof of purchase is unavailable from the end user, then the date of purchase will be deemed to be 3 months after the initial sale to the distributor.

#### 1 Year

JEFFOG45-230 4.5L 1100W DISINFECTANT SPRAY FOGGER

#### 90 Days

- All replacement parts purchased **outside** of the warranty period

**Important:** All parts used in the repair or replacement of warranty covered equipment will be subject to a minimum of 90 days cover or the remaining duration of the warranty period from the original date of purchase.

### Warranty Registration / Activation

You can register and activate your warranty by visiting the Jefferson Tools website using the following address:

**[www.jeffersontools.com/warranty](http://www.jeffersontools.com/warranty)** and completing the online form. Online warranty registration is recommended as it eliminates the need to provide proof of purchase should a warranty claim be necessary.

### Warranty Repair

Should Jefferson confirm the existence of any defect covered by this warranty the defect will be corrected by repair or replacement at an authorized Jefferson dealer or repair centre.

### Packaging & Freight Costs

The customer is responsible for the packaging of the equipment and making it ready for collection. Jefferson will arrange collection and transportation of any equipment returned under warranty. Upon inspection of the equipment, if no defect can be found or the equipment is not covered under the terms of the Jefferson warranty, the customer will be liable for any labour and return transportation costs incurred. These costs will be agreed with the customer before the machine is returned.

\* Jefferson reserve the right to void any warranty for damages identified as being caused through misuse

### Warranty Limitations

Jefferson will not accept responsibility or liability for repairs made by unauthorised technicians or engineers. Jefferson's liability under this warranty will not exceed the cost of correcting the defect of the Jefferson products.

Jefferson will not be liable for incidental or consequential damages (such as loss of business or hire of substitute equipment etc.) caused by the defect or the time involved to correct the defect. This written warranty is the only express warranty provided by Jefferson with respect to its products.

Any warranties of merchantability are limited to the duration of this limited warranty for the equipment involved.

Jefferson is not responsible for cable wear due to flexing and abrasion. The end user is responsible for routine inspection of cables for possible wear and to correct any issues prior to cable failure.

## Claiming Warranty Coverage

The end user must contact Jefferson Professional Tools & Equipment (Tel: +44 (0) 1244 646 048) or their nearest authorised Jefferson dealer where final determination of the warranty coverage can be ascertained.

### Step 1 - Reporting the Defect

#### Online Method:

- Visit our website [www.jeffersonstools.com/warranty](http://www.jeffersonstools.com/warranty) and complete the Warranty Returns form. You can complete the form online and submit it to us directly or download the form to print out and return by post.

#### Telephone Method:

Contact your Jefferson dealer or sales representative with the following information:

- Model number
- Serial number (usually located on the specification plate)
- Date of purchase

A Warranty Returns form will be sent to you for completion and return by post or fax, together with details of your nearest authorised Jefferson repair centre. On receipt of this form Jefferson will arrange to collect the equipment from you at the earliest convenience.

### Step 2 - Returning the Equipment

It is the customer's responsibility to ensure that the equipment is appropriately and securely packaged for collection, **together with a copy of the original proof of purchase**. Please note that Jefferson cannot assume any responsibility for any damage incurred to equipment during transit. Any claims against a third party courier will be dealt with under the terms & conditions of their road haulage association directives.

**NOTE: Jefferson will be unable to collect or process any warranty requests without a copy of the original proof of purchase.**

### Step 3 - Assessment and Repair

On receipt, the equipment will be assessed by an authorised Jefferson engineer and it will be determined if the equipment is defective and in need of repair and any repairs needed are covered by the warranty policy. In order to qualify for warranty cover all equipment presented must have been used, serviced and maintained as instructed in the user manual.

Where repair is not covered by the warranty a quotation for repair, labour costs and return delivery will be sent to the customer (normally within 7 working days).

**NOTE:** If the repair quotation is not accepted Jefferson Professional Tools & Equipment will invoice **1 hour labour time at £30 per hour plus return carriage costs (plus VAT)**.

In cases where no fault can be found with the equipment, or, if incorrect operation of the equipment is identified as the cause of the problem, a minimum of 1 hour labour at **£30 per hour plus carriage costs** will be required before the equipment will be despatched back to the customer.

Any equipment repaired or replaced under warranty will normally be ready for shipment back to the customer within 7 working days upon receipt of the equipment at an authorised Jefferson Repair centre (subject to part availability). Where parts are not immediately available Jefferson will contact you with a revised date for completion of the repair.

## General Warranty Enquiries

For any further information relating to Jefferson warranty cover please call **+44 (0) 1244 646 048** or send your enquiry via email to **warranty@jeffersonstools.com**

#### Disclaimer:

*The information in this document is to the best of our knowledge true and accurate, but all recommendations or suggestions are made without guarantee. Since the conditions of use are beyond their control, Jefferson Tools® disclaim any liability for loss or damage suffered from the use of this data or suggestions. Furthermore, no liability is accepted if use of any product in accordance with this data or suggestions infringes any patent. Jefferson Tools® reserve the right to change product specifications and warranty statements without further notification. All images are for illustration purposes only.*

## EU DECLARATION OF CONFORMITY

We, Jefferson Professional Tools & Equipment, as the authorised European Community representative of the manufacturer, declare that the following equipment conforms to the requirements of the following:

| Directive / Standard / Regulation | Description:                                  |
|-----------------------------------|---|
| 2014/35/EU (as amended)           | Low Voltage Directive (LVD)                   |
| 2014/30/EU (as amended)           | Electromagnetic Compatibility Directive (EMC) |

**Equipment Category:**


Chemical Sprayer / Fogger

**Model Number(s):**

JEFFOG45-230 4.5L 1100W DISINFECTANT SPRAY FOGGER

**Signed by:**

Stephen McIntyre



**Position in the company:**

Operations Director

**Date:**

18 November 2020

*Technical file holder's address as shown below*

**Name and address of manufacturer or authorised representative:**

Jefferson Tools, Herons Way, Chester Business Park,  
Chester, United Kingdom, CH4 9QR

**Telephone:** +44 (0)1244 646 048 **Fax:** +44 (0)1244 241 191

**Email:** enquiries@jeffersonstools.com

## **IMPORTANT! SAFETY FIRST!**

Before attempting to use this product please read all the safety precautions and operating instructions outlined in this manual to reduce the risk of fire, electric shock or personal injury.

Jefferson Tools,  
Herons Way,  
Chester Business Park,  
Chester,  
United Kingdom,  
CH4 9QR

**Tel.** +44 (0)1244 646 048  
**Email:** sales@jeffersonstools.com

[www.jeffersonstools.com](http://www.jeffersonstools.com)