

Jefferson[®]

PROFESSIONAL TOOLS & EQUIPMENT

110V **ELECTRIC HAND MIXER**
120L Mixing Capacity • 2 Speed Gear Unit • Powerful 1400W Motor



JEFEHM-110

User Manual
v.2.1



CONTENTS

Contents	3
About This Document	3
Specifications	4
Equipment Identification	4
Safety Guidelines	5
Operation	6
Maintenance	8
Environmental Protection	8
WEEE Waste Electrical and Electronic Equipment Statement	8
RoHS Directive 2011/65/EU	8
EU Declaration of Conformity	9
Parts List	10
Parts Diagram	11
Limited Warranty Statement	12

ABOUT THIS DOCUMENT

This manual has been compiled by Jefferson Tools and is an integrated part of the product with which it's enclosed and should be kept with it for future reference. Please read all of the information supplied in this User Manual before operating this product.

This manual describes the purpose for which the product has been designed and contains all the necessary information to ensure its correct and safe use. We recommend that you read the information supplied before carrying out any maintenance or repair. By following all the general safety instructions contained in this manual you will help to ensure operator safety and extend the potential life span of the equipment.

All photographs and drawings in this manual are supplied by Jefferson Tools to help illustrate the operation of the product. Whilst every effort has been made to ensure accuracy of information contained in this manual our policy of continuous improvement determines the right to make modifications without prior warning.

Contact your nearest Jefferson Dealer if you are unsure about any information included in this manual or require any additional information about the safe use, operation, maintenance, or repair of this equipment.

SPECIFICATIONS

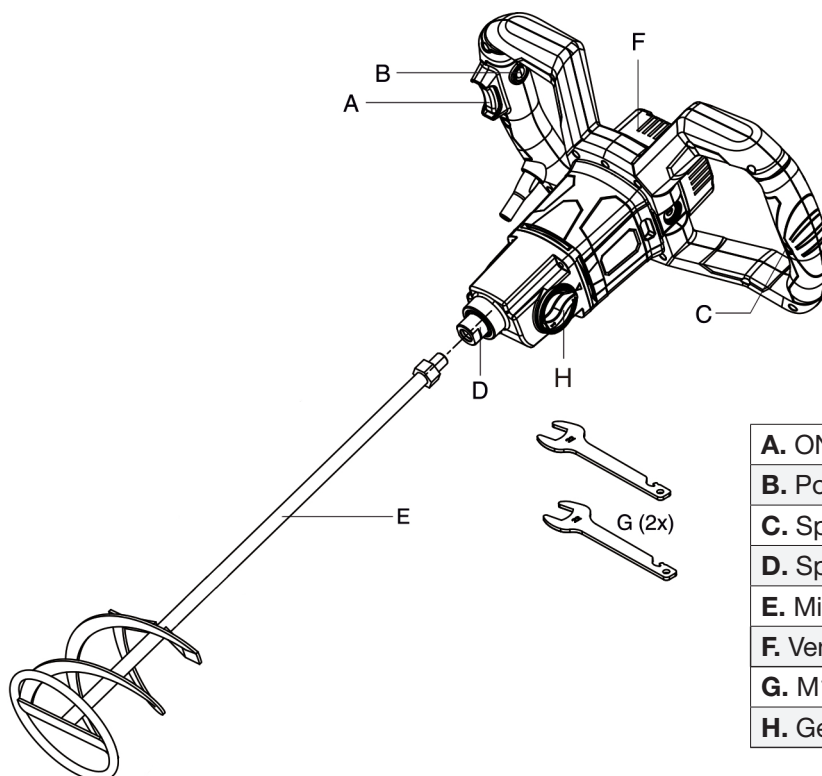
Model Number	JEFEHM-110
Voltage ~ Frequency:	110V ~ 50/60Hz
Motor Power:	1400W
Speed:	2 Gear Unit 0-480 RPM / 0-800 RPM
Paddle:	Ø140mm Diameter • 600mm Length • 2x M14 Fitting
Mixing Volume:	120L
Protection Against Electric Shock:	Class II <input type="checkbox"/>
Ingress Protection Rating:	IP20
Noise Emissions:	L _{pa} = 87 dB(A) L _{wa} = 98 dB(A) *
Uncertainty:	K _{pa} = 3dB K _{wa} = 3dB
Hand-arm Vibration Data:	a _h = 5.23 m/s ² (Uncertainty K = 1.5m/s ²)
Weight:	Mixer: 4.1kg Paddle: 1.3kg (5.4kg combined)

* Sound Power Level:

The figures quoted in this table are emission (sound power) levels and are not necessarily safe working levels. Whilst there is a correlation between the emission and exposure levels, this can not be used reliably to determine whether or not further precautions are required.

Factors that influence the actual level of exposure to the work-force include the characteristics of the work room, the other sources of noise, the number of machines and other adjacent processes, and the length of time for which an operator is exposed to the noise. Also the permissible exposure level can vary between regions. This information, however, will allow the user of the machine to make a better evaluation of the hazard and risk.

EQUIPMENT IDENTIFICATION



A. ON / OFF Power Switch / Trigger
B. Power Locking Button
C. Speed Controller
D. Spindle
E. Mixing Paddle
F. Ventilation Grilles
G. M14 Spanners (x2)
H. Gear Selection (1 - 2)

SAFETY GUIDELINES



Please read and ensure that you understand all of the operating instructions, safety precautions and warnings in this User Manual before operating or maintaining this equipment. An accident can often be avoided by recognizing a potentially hazardous situation before it occurs, and by observing the appropriate safety procedures. Never use this equipment or modify it in any way that has not been specifically recommended by the manufacturer. Contact a qualified electrician for advice on any issues relating to electrical safety in your working environment.

GENERAL EQUIPMENT SAFETY

- Ensure that you are using the correct Personal Protection Equipment (PPE) for the work undertaken. PPE should be suitably approved and should include eye protection and a dust mask (or other suitable respiratory protection) if mixing generates dust. Rubber gloves are recommended. Use correctly rated hearing protection.
- To reduce the impact of noise and vibration emission, limit the time of operation, use low-vibration and low-noise operating modes when possible. Remove ill fitting clothing. Remove ties, watches, rings, other loose jewellery and contain long hair before operating this equipment.
- Use mixer in a suitable working environment for its function, keep area clean, tidy and free from unrelated materials and ensure adequate lighting and ventilation. Check moving parts and alignment of mixing paddle before use. Do not use this equipment if it is damaged in any way. Replace or repair damaged parts before use.
- Use only authorised replacement parts. Unauthorised parts may be dangerous and will invalidate the warranty. Contact Jefferson Tools for help and advice on all aspects of service, repair and replacement parts for this equipment.
- Always disconnect the mixer from the mains supply before changing accessories, servicing or performing any repairs or maintenance. Make sure that the equipment is serviced regularly, kept clean and stored in a clean and dry location (away from children) when not in use.
- Never leave the mixer running whilst unattended. Avoid unintentional starting of the mixer (disconnect from mains supply when not in use). Do not over-reach and ensure the floor is not slippery and wear non-slip shoes. Maintain correct balance and footing at all times. Always use keep both hands on the handle grips during use to maintain control.
- Do not operate in the vicinity of children or animals. Do not use the mixer for any other task other than that which it was not designed to perform. Never operate mixer near flammable liquids or gasses. Do not allow the mixer to get wet or operate in the rain. Do not operate the mixer when you are tired, under the influence of alcohol, drugs or intoxicating medication.



WARNING:

This product produces an electromagnetic field during operation! This field may under some circumstances interfere with active or passive medical implants! To reduce the risk of serious or fatal injury, we recommend persons with medical implants to consult their doctor and the medical implant manufacturer before operating this product! Some dust created by power sanding, sawing, grinding, drilling and other construction activities contains chemicals known to cause cancer, birth defects or other reproductive harm. Some examples of these chemicals include: Lead from lead-based paint, Crystalline silica from bricks and cement and other masonry products, Arsenic and chromium from chemically treated timber Your risk from these exposures varies, depending upon how often you do this type of work. To reduce your exposure to these chemicals: Work in a well-ventilated area. Work with approved protective equipment, such as those dust masks that are specially designed to filter microscopic particles. No responsibility is accepted for incorrect use of this equipment. Incorrect use can result in damage to the equipment and danger to the user. Warranty will be void in the event of incorrect use. The warnings, cautions and instructions discussed in this instruction manual cannot cover all possible conditions and situations that may occur. It must be understood by the operator that common sense and caution are factors which cannot be built into this product, but must be supplied by the operator.



ELECTRICAL SAFETY



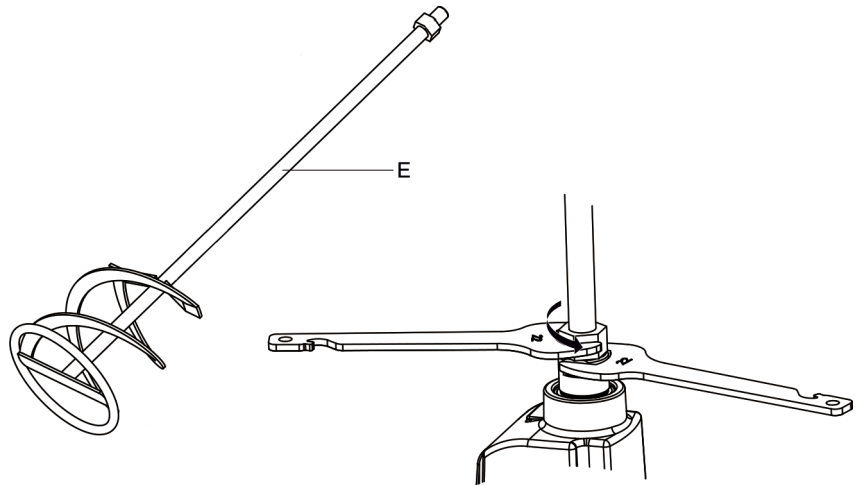
Ensure that you check the equipment thoroughly to ensure it is safe and fit for purpose before each use. It is important that you inspect all plugs, sockets, power cables and electrical fittings for wear and damage and repair or replace any defective components. The risk of electric shock can be minimised by the correct use of the appropriate electrical safety devices.

- We recommend that you fit a Residual Current Circuit Breaker (RCCB) in the main distribution board and that a Residual Current Device (RCD) is used when operating this equipment.
- The Electricity at Work Act 1989 includes legislation that places legal implications on employers to ensure the safety of electrical devices in the workplace. The regulations dictate that all portable equipment must be inspected regularly and tested to ensure that it is safe for use. 'Portable equipment' means any electrical item that can be moved and this is often referred to as Portable Appliance Testing (PAT). PAT testing should be carried out regularly on this equipment by trained, authorised personnel, as required by the legislation. •The Health and Safety at Work Act 1974 states that it is the responsibility of the owner of electrical appliances to ensure that both the equipment and working environments are maintained to ensure safe operation at all times.
- Check that all equipment cables are secure, correctly insulated, free from damage, and protected against short circuit and overload before connecting to the power supply. Do not use worn or damaged cables, plugs, sockets or other fittings.
- Ensure that the power supply matches voltage requirements specified on the equipment and that the plug is wired correctly and fitted with the correct fuse. If the electrical fuse blows, ensure it is replaced by an identical type of fuse with the same rating. Avoid body contact with earthed or grounded surfaces such as pipes, radiators, ranges and refrigerators. There is an increased risk of electric shock if your body is earthed or grounded.
- Never pull or manoeuvre this equipment into position using the power cable. Ensure the power cable is kept away from heat, oil and sharp edges. We recommend that the equipment is connected directly to the power supply without the use of extension leads as the resulting voltage drop can reduce motor performance. If extension leads are required ensure they are suitable for use in outdoor environments.
- Always disconnect the equipment from the power source before servicing, inspecting, maintaining, cleaning, replacing or checking any parts.

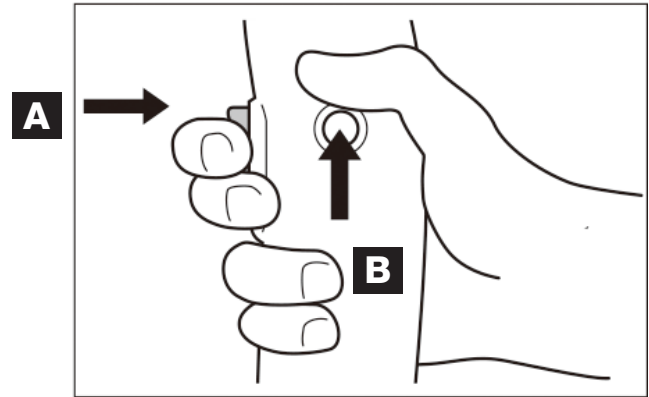
OPERATION

1. Ensure that the equipment is disconnected from the mains power supply and the power switch is set to the OFF position
2. Attach the mixing paddle to the spindle using the two M14 Nuts and adjustment spanners as shown in the illustration on the opposite page. Ensure that the nuts are tight and secure.
3. Connect the mixer to the power supply.
4. Ensure the mixing container is securely positioned and level on the floor before dipping the mixing paddle into the substance to be mixed.
5. Set the speed control to the low setting and turn the power switch on the mixer to the ON position holding the mixer firmly with both hands on the grip. Gradually increase the mixing speed by turning the speed control to the required setting (the mixing paddle should move steadily and be easily controlled so that the substance should not splash around).
6. When mixing is complete switch off mixer before removing from the mixing substance. Disconnect from the power supply and clean off paddle thoroughly after use. Allow to dry before placing back in storage.

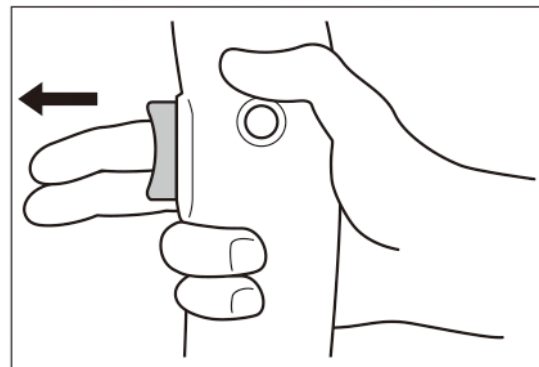
With the mixer disconnected from the mains power supply, connect the mixing paddle to the mixer spindle using the M14 Nuts and Spanners as shown in the illustration.



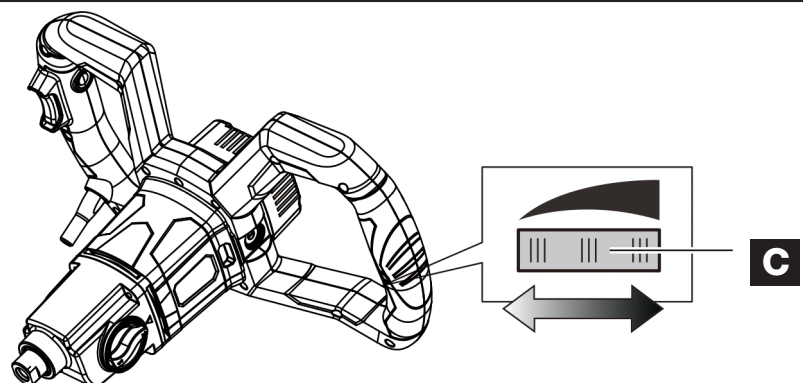
Use the Power Switch Trigger [A] turn the mixer **ON** and **OFF**. Power can be held in the **ON** position using the Power Locking Button [B]



To stop the mixer, release the Power Switch Trigger and Power Locking Button.



Adjust the speed of the paddle using the Speed Control Settings [C]



MAINTENANCE

Ensure that the equipment is disconnected from the mains power supply before carrying out maintenance on the mixer.

- Always keep tool and cord clean (especially the ventilation slots)
- Always clean the mixer and functional parts after use
- Clean the tool with a dry, soft cloth (do not use cleaning agents or solvents)
- Clean ventilation grilles (F) regularly with a brush or compressed air

ENVIRONMENTAL PROTECTION



**PLEASE
RECYCLE**

Recycle any packaging and unwanted materials instead of disposing of them as waste. All tools, accessories and packaging should be sorted, taken to a recycling centre and disposed of in a manner which is compatible with the environment. When the product becomes completely unserviceable, reaches the end of its working life and requires disposal, drain off any fluids (if applicable) into approved containers and dispose of the product and the fluids according to local regulations.

WEEE Waste Electrical and Electronic Equipment Statement

Information on Disposal for Users of Waste Electrical & Electronic Equipment



This symbol on the product(s) and / or accompanying documents means that used electrical and electronic products should not be mixed with general household waste. For proper treatment, recovery and recycling, please take this product(s) to designated collection points where it will be accepted free of charge.

For private households:

Dispose of this product at the end of its working life and in compliance with the EU Directive on Waste Electrical and Electronic Equipment (WEEE). Contact your local solid waste authority for recycling information for this equipment. Disposing of this product correctly will help save valuable resources and prevent any potential negative effects on human health and the environment, which could otherwise arise from inappropriate waste handling. Please contact your local authority for further details of your nearest designated collection point. Penalties may be applicable for incorrect disposal of this waste, in accordance with your national legislation.

For business users in the European Union:

If you wish to discard electrical and electronic equipment, please contact your dealer or supplier for further information.

Information on Disposal in other Countries outside the European Union:

This symbol is only valid in the European Union. If you wish to discard this product please contact your local authorities or dealer and ask for the correct method of disposal.

RoHS Directive 2011/65/EU

We hereby declare that this equipment has been tested and found to be compliant to RoHS Directive 2011/65/EU of the European Parliament and the Council from 08/06/2011 on restriction of the use of certain hazardous substances in electrical and electronic appliances. Determination of levels of regulated substances in electrotechnical products, elements of Cadmium (Cd), Lead (Pb), Mercury (Hg), Chromium (Cr) and Bromine (Br) contents were measured by XRF Spectroscopy and chemical confirmation test for RoHS restricted substances.

EU DECLARATION OF CONFORMITY

We, Jefferson Tools as the authorised European Community representative of the manufacturer, declare that the following equipment conforms to the requirements of the following:

Directive / Standard:	Description:
2006/42/EC	Machinery Directive EN 62841-1:2015+AC:15 EN 62841-2-10:2017
2014/30/EU	Electromagnetic Compatibility
2014/35/EU	Low Voltage Directive
2011/65/EU (as amended)	RoHS Directive

Equipment Category: Electric Hand Mixer

Model Number: JEFEHM-110
Description: 110V 1400W Electric Hand Mixer

Noise Emissions: Lpa = 87 dB(A)
Lwa = 98 dB(A)

Uncertainty: Kpa = 3dB
Kwa = 3dB

Hand-arm Vibration Data: ah = 5.23 m/s²

Uncertainty K = 1.5m/s²

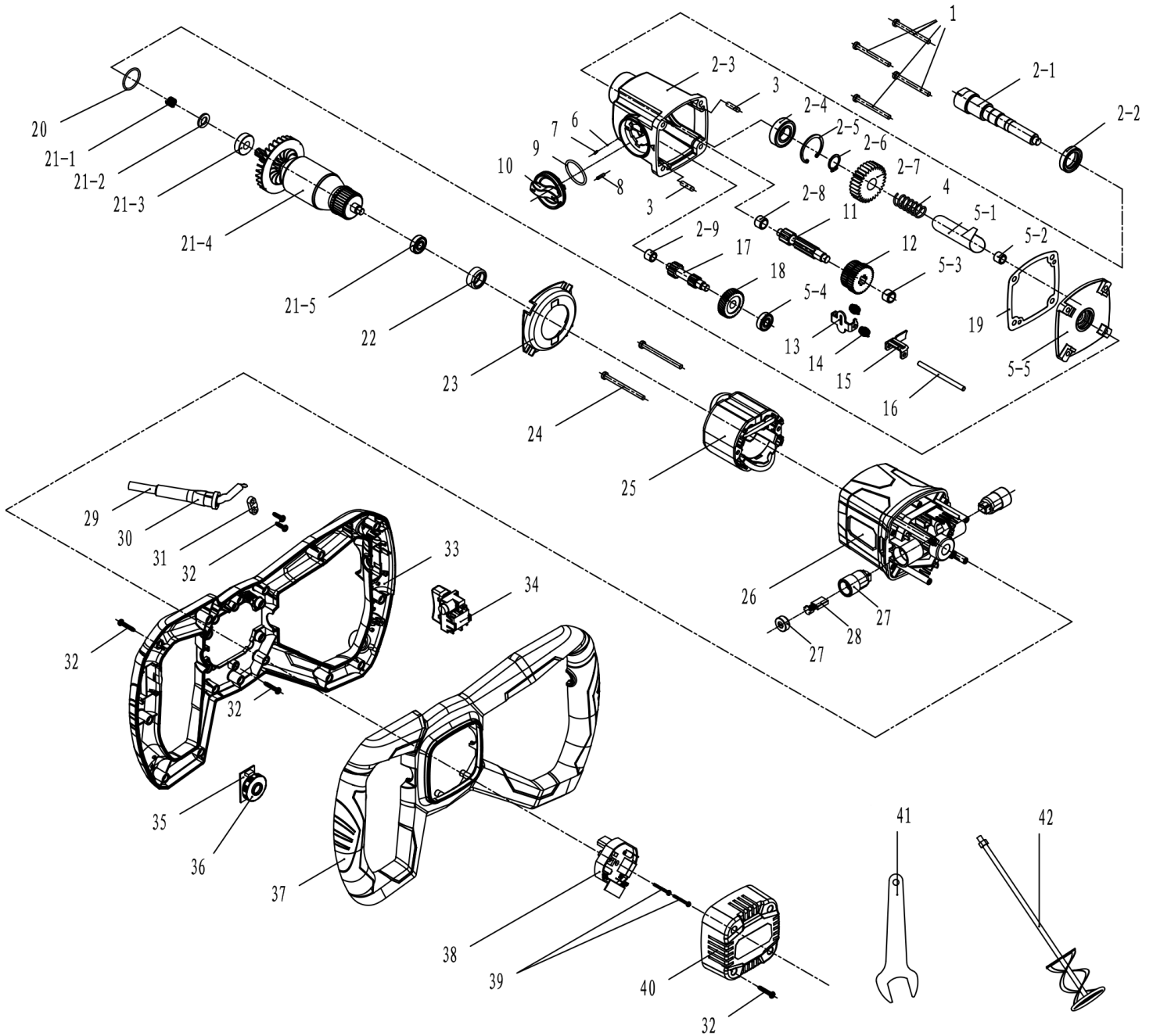
Signed by: Stephen McIntyre


Position in the company: Operations Director
Date: 22 April 2021

Name and address of manufacturer or authorised representative: Jefferson Professional Tools & Equipment
24 Lisgorgan Lane,
Upperlands,
BT46 5TE

Tel: +44 (0)1244 646 048 (UK) / +353 (0)1473 0300 (ROI)
Email: info@jeffersonstools.com

PARTS DIAGRAM



PARTS LIST

#	Description	Qty	#	Description	Qty
1	Screw ST5×35	4	18	Diagonal Gear	1
2-1	Output Shaft	1	19	Paper Washer	1
2-2	Oil Seal Ø22 × Ø32 × 7	1	20	O Ring Ø27×Ø23×Ø2	1
2-3	Gear Box	1	21-1	Spring	1
2-4	Bearing 6002 Rs	1	21-2	Woolen Washer Ø9×Ø18×2.5	1
2-5	Circlip 32	1	21-3	Bearing 609RS	1
2-6	Circlip 15	1	21-4	Rotor Assy	1
2-7	Big Gear	1	21-5	Bearing 608Z	1
2-8	Needle Bearing HK1010	1	22	Bearing Sleeve	1
2-9	Needle Bearing HK0810	1	23	Dust-proof Ring	1
3	Pin Ø4×10	2	24	Screw ST4.8×65-F	2
4	Spring	1	25	Stator Assy	1
5-1	Oil Filler Pipe	1	26	Housing	1
5-2	Needle Bearing Hk0810	1	27	Brush holder and Brush cap (pair)	1 (pair)
5-3	Needle Bearing Hk1010	1	28	Carbon Brush (pair)	1 (pair)
5-4	Bearing 608Z	1	29	Cable and Plug	1
5-5	Middle Cover	1	30	Cable Sleeve	1
6	Steel Ball Ø3.96	1	31	Cable Plate	1
7	Knob Spring	1	32	Screw ST4×46-F	28
8	Pin Ø3×8	1	33	Lower Handle Cover	1
9	O Ring Ø23.8×Ø20×Ø1.9	1	34	Switch	1
10	Shift Knob	1	35	Potentiometer	1
11	Sub-Driving Shaft	1	36	Speed Adjusting Wheel	1
12	Two Gang Gear	1	37	Upper Handle Cover	1
13	Shift Fork A	1	38	Soft Start	1
14	Shift Fork Spring	2	39	Screw ST3×25	2
15	Shift Fork B	1	40	Back Cover	1
16	Shift Guide Rail	1	41	M14 Spanners	2
17	Main Driving Shaft	1	42	Mixing Paddle	1

LIMITED WARRANTY STATEMENT

Jefferson Professional Tools & Equipment, or hereafter "Jefferson" warrants its customers that its products will be free of defects in workmanship or material. Jefferson shall, upon suitable notification, correct any defects, by repair or replacement, of any parts or components of this product that are determined by Jefferson to be faulty or defective.

This warranty is void if the equipment has been subjected to improper installation, storage, alteration, abnormal operations, improper care, service or repair.

Warranty Period

Jefferson will assume both the parts and labour expense of correcting defects during the stated warranty periods below.

All warranty periods start from the date of purchase from an authorised Jefferson dealer. If proof of purchase is unavailable from the end user, then the date of purchase will be deemed to be 3 months after the initial sale to the distributor.

1 Year

JEFEHM-110 • 110V 1400W Electric Hand Mixer

90 Days

- All replacement parts purchased **outside** of the warranty period

Important: All parts used in the repair or replacement of warranty covered equipment will be subject to a minimum of 90 days cover or the remaining duration of the warranty period from the original date of purchase.

Warranty Registration / Activation

You can register and activate your warranty by visiting the Jefferson Tools website using the following address:

www.jeffersontools.com/warranty and completing the online form. Online warranty registration is recommended as it eliminates the need to provide proof of purchase should a warranty claim be necessary.

Warranty Repair

Should Jefferson confirm the existence of any defect covered by this warranty the defect will be corrected by repair or replacement at an authorized Jefferson dealer or repair centre.

Packaging & Freight Costs

The customer is responsible for the packaging of the equipment and making it ready for collection. Jefferson will arrange collection and transportation of any equipment returned under warranty. Upon inspection of the equipment, if no defect can be found or the equipment is not covered under the terms of the Jefferson warranty, the customer will be liable for any labour and return transportation costs incurred. These costs will be agreed with the customer before the machine is returned.

* Jefferson reserve the right to void any warranty for damages identified as being caused through misuse

Warranty Limitations

Jefferson will not accept responsibility or liability for repairs made by unauthorised technicians or engineers. Jefferson's liability under this warranty will not exceed the cost of correcting the defect of the Jefferson products.

Jefferson will not be liable for incidental or consequential damages (such as loss of business or hire of substitute equipment etc.) caused by the defect or the time involved to correct the defect. This written warranty is the only express warranty provided by Jefferson with respect to its products.

Any warranties of merchantability are limited to the duration of this limited warranty for the equipment involved.

Jefferson is not responsible for cable wear due to flexing and abrasion. The end user is responsible for routine inspection of cables for possible wear and to correct any issues prior to cable failure.

Claiming Warranty Coverage

The end user must contact Jefferson Professional Tools & Equipment +44 (0)1244 646 048 (UK) / +353 (0)1473 0300 (ROI) or their nearest authorised Jefferson dealer where final determination of the warranty coverage can be ascertained.

Step 1 - Reporting the Defect

Online Method:

- Visit our website www.jeffersonstools.com/warranty and complete the Warranty Returns form. You can complete the form online and submit it to us directly or download the form to print out and return by post.

Telephone Method:

Contact your Jefferson dealer or sales representative with the following information:

- Model number
- Serial number (usually located on the specification plate)
- Date of purchase

A Warranty Returns form will be sent to you for completion and return by post or fax, together with details of your nearest authorised Jefferson repair centre. On receipt of this form Jefferson will arrange to collect the equipment from you at the earliest convenience.

Step 2 - Returning the Equipment

It is the customer's responsibility to ensure that the equipment is appropriately and securely packaged for collection, **together with a copy of the original proof of purchase**. Please note that Jefferson cannot assume any responsibility for any damage incurred to equipment during transit. Any claims against a third party courier will be dealt with under the terms & conditions of their road haulage association directives.

NOTE: Jefferson will be unable to collect or process any warranty requests without a copy of the original proof of purchase.

Step 3 - Assessment and Repair

On receipt, the equipment will be assessed by an authorised Jefferson engineer and it will be determined if the equipment is defective and in need of repair and any repairs needed are covered by the warranty policy. In order to qualify for warranty cover all equipment presented must have been used, serviced and maintained as instructed in the user manual.

Where repair is not covered by the warranty a quotation for repair, labour costs and return delivery will be sent to the customer (normally within 7 working days).

NOTE: If the repair quotation is not accepted Jefferson Professional Tools & Equipment will invoice **1 hour labour time at £30 per hour plus return carriage costs (plus VAT)**.

In cases where no fault can be found with the equipment, or, if incorrect operation of the equipment is identified as the cause of the problem, a minimum of 1 hour labour at **£30 per hour plus carriage costs** will be required before the equipment will be despatched back to the customer.

Any equipment repaired or replaced under warranty will normally be ready for shipment back to the customer within 7 working days upon receipt of the equipment at an authorised Jefferson Repair centre (subject to part availability). Where parts are not immediately available Jefferson will contact you with a revised date for completion of the repair.

General Warranty Enquiries

For any further information relating to Jefferson warranty cover please call **Tel: +44 (0)1244 646 048 (UK) / +353 (0)1473 0300 (ROI)** or send your enquiry via email to warranty@jeffersonstools.com

Disclaimer:

The information in this document is to the best of our knowledge true and accurate, but all recommendations or suggestions are made without guarantee. Since the conditions of use are beyond their control, Jefferson Tools® disclaim any liability for loss or damage suffered from the use of this data or suggestions. Furthermore, no liability is accepted if use of any product in accordance with this data or suggestions infringes any patent. Jefferson Tools® reserve the right to change product specifications and warranty statements without further notification. All images are for illustration purposes only.

IMPORTANT! SAFETY FIRST!

Before attempting to use this product please read all the safety precautions and operating instructions outlined in this manual to reduce the risk of fire, electric shock or personal injury.

Jefferson Professional Tools & Equipment

24 Lisgorgan Lane,
Upperlands,
BT46 5TE

Tel: +44 (0)1244 646 048 (UK) / +353 (0)1473 0300 (ROI)

Email: info@jeffersonstools.com

www.jeffersonstools.com