

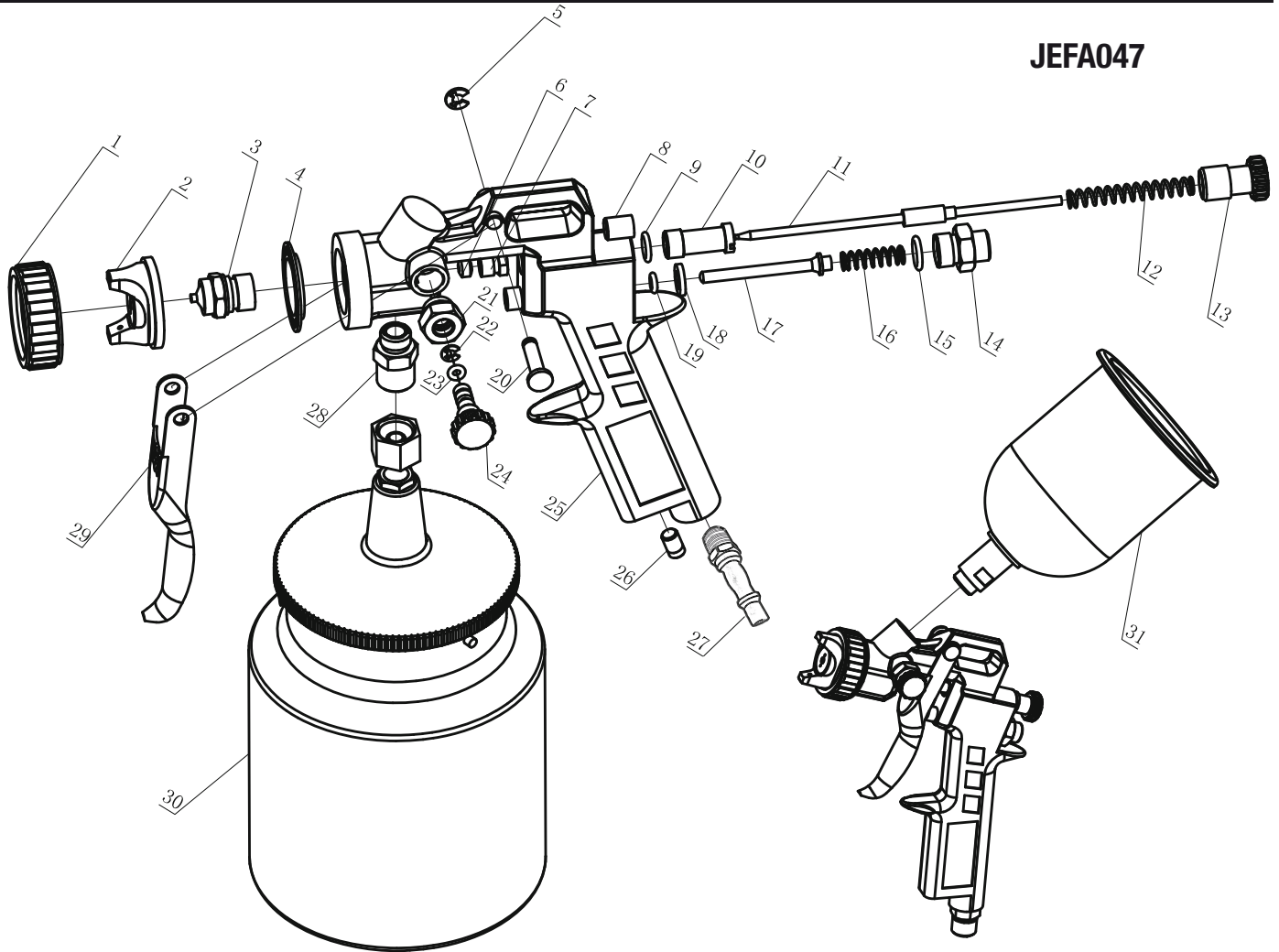
GRAVITY SPRAY GUN

JEFA047



User Manual

1. Parts Identification



No.	Description	Qty
1	Air Cap Ring	1
2	Air Cap	1
3	Fluid Nozzle	1
4	Gasket	1
5	Stop Ring	1
6	Needle Packing Set	1
7	Needle Packing Screw	1
8	Plug Up Screw	1
9	O Ring	1
10	Fluid Adjustment Seat	1
11	Fluid Needle Set	1
12	Fluid Needle Spring	1
13	Needle Adjustment Screw	1
14	Packing Seat	1
15	O Ring	2
16	Air Valve Spring	1

No.	Description	Qty
17	Air Valve	1
18	Gasket	1
19	O Ring	1
20	Trigger Stud	1
21	Packing Seat	1
22	Stop Ring	1
23	O Ring	1
24	Pattern Adjustment Valve Set	1
25	Gun Body	1
26	Plug Down Screw	1
27	Air Joint - Male 1/4" Plug	1
28	Fluid Joint	1
29	Trigger	1
30	Paint Cup Set	1
31	Paint Cup Set	1

2. Specification

Air Pressure	50psi / 3.5bar
Air Inlet	1/4"
Air Consumption	10cfm
Cup Capacity	600ml
Feed Type	Gravity
Fluid Nozzle	1.5mm

3. Operating Instructions

- (1) Paint Cup and Air Hose must be fixed on Spray Gun tight with the spanner provided.
- (2) Set the air pressure to 3 - 3.5kgf/cm by default and adjust according to the viscosity of the paint.
- (3) Hold the gun approximately 15 to 20cm from the target and adjust as required to achieve the appropriate spray.
- (4) Use the Adjusting Valve to set the required pressure.

4. Cleaning & Maintenance

- Soak the Gun Body in a clean solvent and rinse it well after cleaning.
- Disassemble the Air Cap and Fluid Nozzle and soak in a solvent before cleaning carefully with a brush
- Ensure that holes on the Air Cap and Fluid Nozzle are cleaned carefully and not damaged during cleaning.
- Re-fasten the Needle Packing Screw by gently pulling the trigger and adjusting the screw (do not fasten it too tightly).

5. Troubleshooting

Problem	Cause	Solution
1. Irregular spray	Air is mixing with paint in the paint as a result of faulty /or loose Needle packing or loose Paint Cup locking nut.	<ul style="list-style-type: none"> • Replace the O Ring • Tighten the Needle Packing / Paint Cup
2. One-sided paint pattern	<ol style="list-style-type: none"> 1. A portion of the square bore of Air Cap has been clogged with debris 2. A build up of solid material at the top of the Fluid Nozzle 	Clean the gun thoroughly as described in the Cleaning & Maintenance Section
3. Spray pattern in sickle / crescent shaped	Debris is blocking the passage from the Air Cap	Clean the gun thoroughly as described in the Cleaning & Maintenance Section
4. Narrow /Thin Spray Pattern	<ol style="list-style-type: none"> 1. Air pressure is too high 2. Paint viscosity is too thin 	<ul style="list-style-type: none"> • Reduce the air pressure • Increase paint viscosity
5. Thick / Fat Spray Pattern	<ol style="list-style-type: none"> 1. The Fluid Nozzle is worn or damaged 2. Air pressure from the Air Cap is excessively low 3. Paint viscosity is excessively high 	<ul style="list-style-type: none"> • Replace the Fluid Nozzle • Increase air pressure • Reduce paint viscosity

IMPORTANT! SAFETY FIRST!

Before attempting to use this product please read all the safety precautions and operating instructions outlined in this manual to reduce the risk of fire, electric shock and personal injury.



Jefferson Tools, Herons Way, Chester Business Park, Chester, United Kingdom, CH4 9QR
Tel. +44 (0)1244 646 048
Email: sales@jeffersonstools.com

www.jeffersonstools.com